



Woodford End | Cannock | WS11 5JQ
Offers In The Region Of £99,995



Summary

Well-Presented Two-Bedroom Ground Floor Flat

Located in a residential area, Woodford End is a well-maintained two-bedroom ground-floor flat offering comfortable and low-maintenance living. The property is set within a purpose-built development and benefits from communal parking.

Inside, the flat features a modern-style kitchen, a good-sized living room, two bedrooms, and a bathroom. The interior is in nice condition throughout, making it an ideal choice for first-time buyers, investors, or those looking to downsize.

The location offers convenient access to local shops, schools, and transport links, including Cannock town centre and the train station.

This is a great opportunity to purchase a tidy, ready-to-move-into flat in a popular part of Cannock.

Key Features

- GROUND FLOOR
- IDEAL FOR LOCAL SHOPS AND AMENITIES
- COMMUNAL PARKING
- SPACIOUS LOUNGE
- VIEWING ADVISED
- TWO BEDROOMS
- EXCELLENT TRANSPORT LINKS
- MODERN KITCHEN
- COMMUNAL GARDENS

Rooms and Dimensions

ENTRANCE HALLWAY

LOUNGE

13'6" x 11'10" (4.14 x 3.61)

KITCHEN

11'1" x 6'7" (3.38 x 2.03)

BEDROOM ONE

12'2" x 8'2" (3.73 x 2.51)

BEDROOM TWO

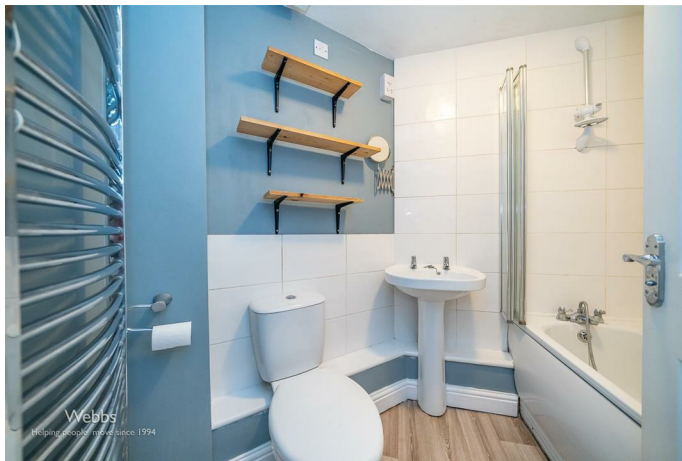
10'5" x 9'10" (3.20 x 3.02)

BATHROOM

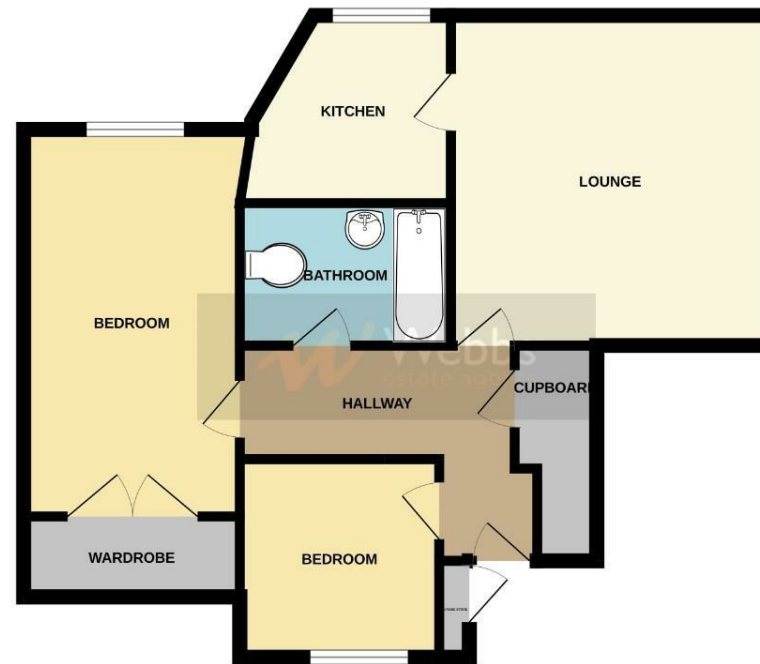
COMMUNAL CAR PARKING

Identification checks - C



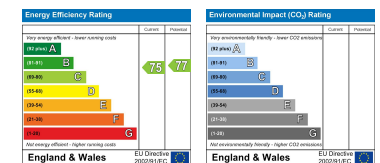


GROUND FLOOR
568 sq.ft. (52.7 sq.m.) approx.



TOTAL FLOOR AREA: 568 sq.ft. (52.7 sq.m.) approx.
While every attempt has been made to ensure the accuracy of the floorplan contained herein, measurements of doors, windows, rooms and any other items are approximate and no responsibility is taken for any error, omission or misstatement. This plan is for illustrative purposes only and should be used as such by any prospective purchaser. The services, systems and appliances shown have not been tested and no guarantee as to their operability or efficiency can be given.
Made with Metropix i2025

Webbs Estate Agents - endeavour to maintain accurate depictions of properties in Virtual Tours, Floor Plans and descriptions, however, these are intended only as a guide and purchasers must satisfy themselves by personal inspection.



153 Avon Road, Cannock, WS11 1LF

Tel: 01543 468846 | Email: sales@webbestateagents.co.uk | www.webbestateagents.co.uk