



Dovedale Avenue | Walsall | WS3 4HG

£1,100 Per Month

 **Webbs**  
estate agents



## Summary

Webbs Estate Agents are pleased to present this newly decorated three bedroom home located in the desirable location of Pelsall village. The property boasts fantastic travel links to Wolverhampton, Cannock, Lichfield and Birmingham along with public transport links and local amenities.

On the ground floor, the property offers a large entrance hallway, open plan living and dining area, kitchen, utility area, downstairs shower room and access to the tidy rear garden area. On the first floor, the property further benefits from three large bedrooms, two of which being large doubles with storage and the family bathroom. Recently had new carpets and decorated.

Externally, the property offers a large off road parking area, garage space and wraparound front garden.

## Key Features

## Rooms and Dimensions

### PROPERTY DETAILS:

#### Entrance Hallway

#### Lounge

19'10" x 11'8" (6.06 x 3.58)

#### Kitchen

13'10" x 8'5" (4.22 x 2.57)

#### Utility Room

11'6" x 9'8" (max) (3.53 x 2.95 (max))

#### Shower Room

#### Bedroom One

11'8" x 8'9" (3.57 x 2.69)

#### Landing

#### Bedroom Two

11'8" x 9'1" (3.57 x 2.77)

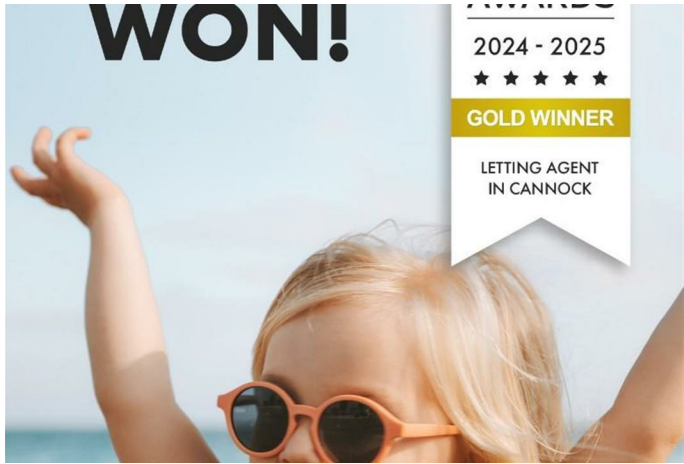
#### Bedroom Three

8'4" x 7'3" (2.56 x 2.23)

#### Bathroom

#### Please Note

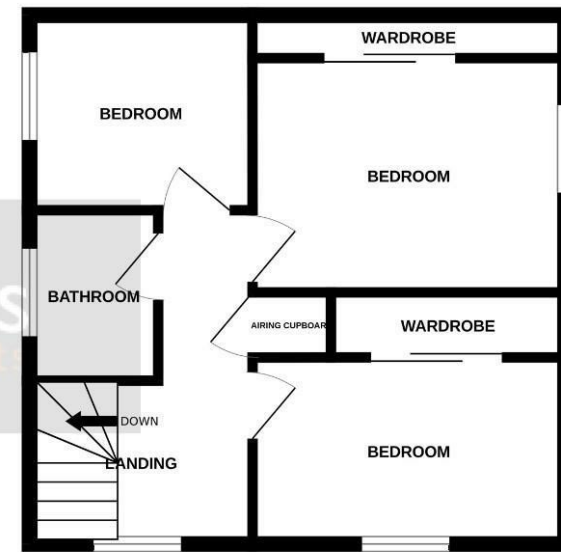




GROUND FLOOR

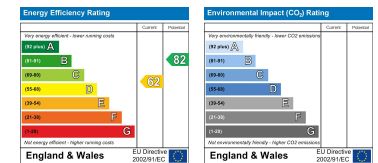


1ST FLOOR



Whilst every attempt has been made to ensure the accuracy of the floorplan contained here, measurements of doors, windows, rooms and any other items are approximate and no responsibility is taken for any error, omission or mis-statement. This plan is for illustrative purposes only and should be used as such by any prospective purchaser. The services, systems and appliances shown have not been tested and no guarantee as to their operability or efficiency can be given.  
Made with Metropix ©2025

Webbs Estate Agents - endeavour to maintain accurate depictions of properties in Virtual Tours, Floor Plans and descriptions, however, these are intended only as a guide and purchasers must satisfy themselves by personal inspection.



153 Avon Road, Cannock, WS11 1LF

Tel: 01543 468846 | Email: [sales@webbestateagents.co.uk](mailto:sales@webbestateagents.co.uk) | [www.webbestateagents.co.uk](http://www.webbestateagents.co.uk)