



Main Road | Rugeley | WS15 1DX

£1,250 PCM

 **Webbs**
estate agents

Summary

WEBBS ESTATE AGENTS are delighted to present this versatile retail premises in the heart of Brereton. Prominently positioned on Main Road, this self-contained unit offers exceptional visibility and foot traffic, an ideal setting for a thriving business.

Previously operating as a hair salon, the premises is well-suited for a variety of uses, providing an adaptable layout to meet diverse business needs and is a fantastic opportunity for retailers, salon owners, therapists, or service providers looking to establish and grow their business in a sought-after location.

Allocated off-road parking is available at both the front and rear of the premises. Plus, a garage/storage space is also available on request.

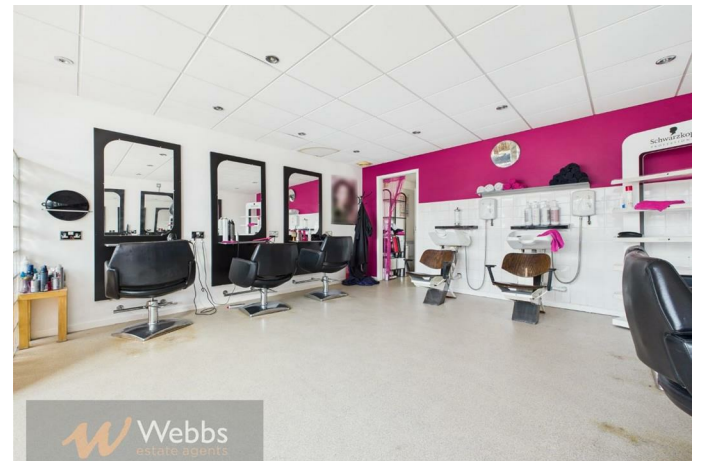
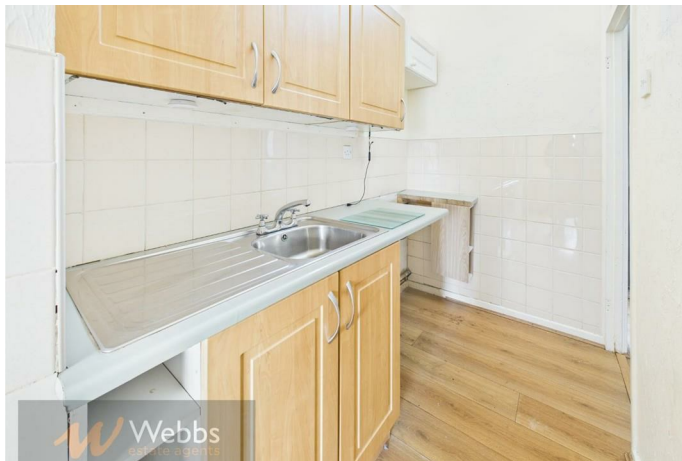
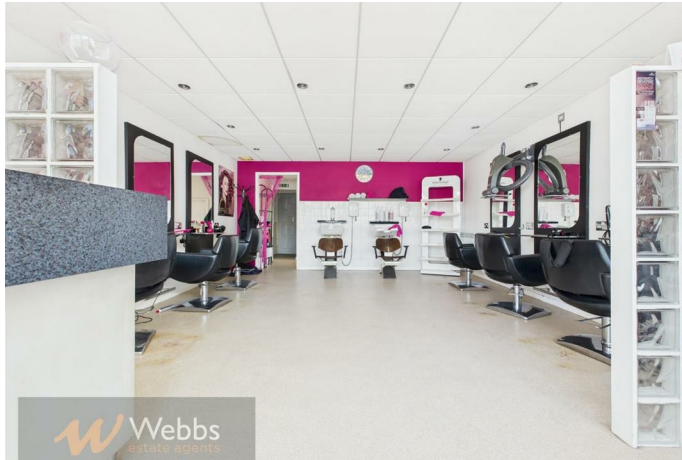
KEY FEATURES:

Key Features

- Prime Location – High visibility and strong passing trade on a busy road.
- Spacious Retail Frontage – Well-designed main sales area for maximum exposure.
- Flexible First Floor – Ideal for extra retail space, treatment rooms, or private living quarters.
- Rent – £18,000 per annum (exclusive).
- Lease Terms – Negotiable.
- Versatile Layout – Previously a hair salon, adaptable for various businesses.
- Additional Facilities – Rear lobby with kitchenette and WC for convenience.
- Size – Approx. 872 sq. ft. (81 sq. m.).
- Business Rate Relief – May apply (tenants should verify with the local authority).
- EPC – Pending.

Rooms and Dimensions







Webbs Estate Agents - endeavour to maintain accurate depictions of properties in Virtual Tours, Floor Plans and descriptions, however, these are intended only as a guide and purchasers must satisfy themselves by personal inspection.

