



Rutland Crescent | Walsall | WS9 8JW

£740 PCM

 **Webbs**
estate agents

Summary

Webbs Estate Agents are pleased to offer this spacious and well-presented apartment, providing a comfortable home in the heart of Aldridge.

The accommodation briefly comprises a communal entrance hallway with a secure intercom entry system, leading to a welcoming entrance hall. Inside, you'll find a spacious lounge, a well-appointed double bedroom with built-in wardrobes, and a bathroom.

Additional benefits include access to a well-maintained communal garden, a private external store cupboard, and a further storage cupboard conveniently located adjacent to the apartment.

Situated in the sought-after Aldridge area, this home is just moments from local shops, cafes, and restaurants, while Barr Beacon Nature Reserve is nearby for scenic walks. Commuters will appreciate excellent transport links to Walsall, Sutton Coldfield, and Birmingham via the A452 and M6.

Early viewing is highly recommended, as this is sure to be a popular let!

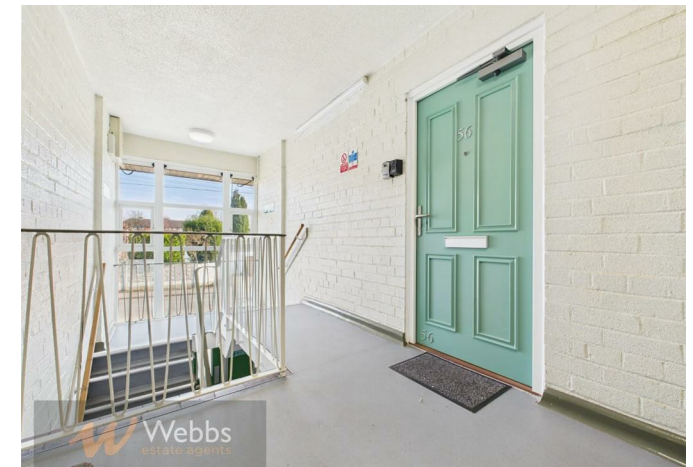
Key Features

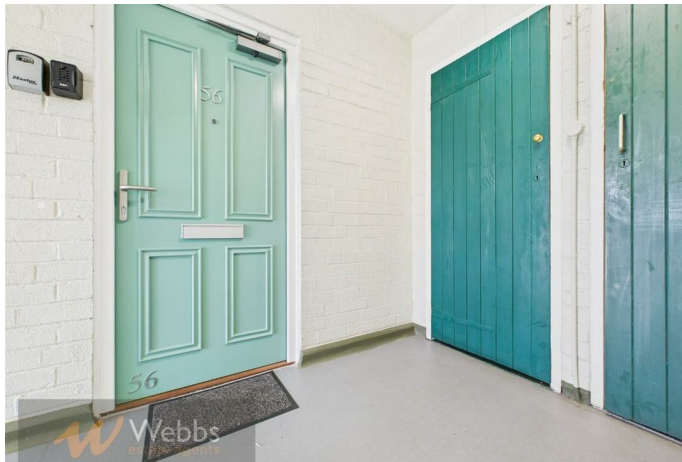
- Spacious & well-presented apartment in the heart of Aldridge
- Welcoming entrance hall
- Well-appointed double bedroom with built-in wardrobes
- Access to a well-maintained communal garden
- Close to local shops, cafes, and restaurants
- Secure communal entrance with intercom entry system
- Spacious lounge
- Bathroom
- Plenty of storage both inside and out
- Excellent transport links to Walsall, Sutton Coldfield & Birmingham

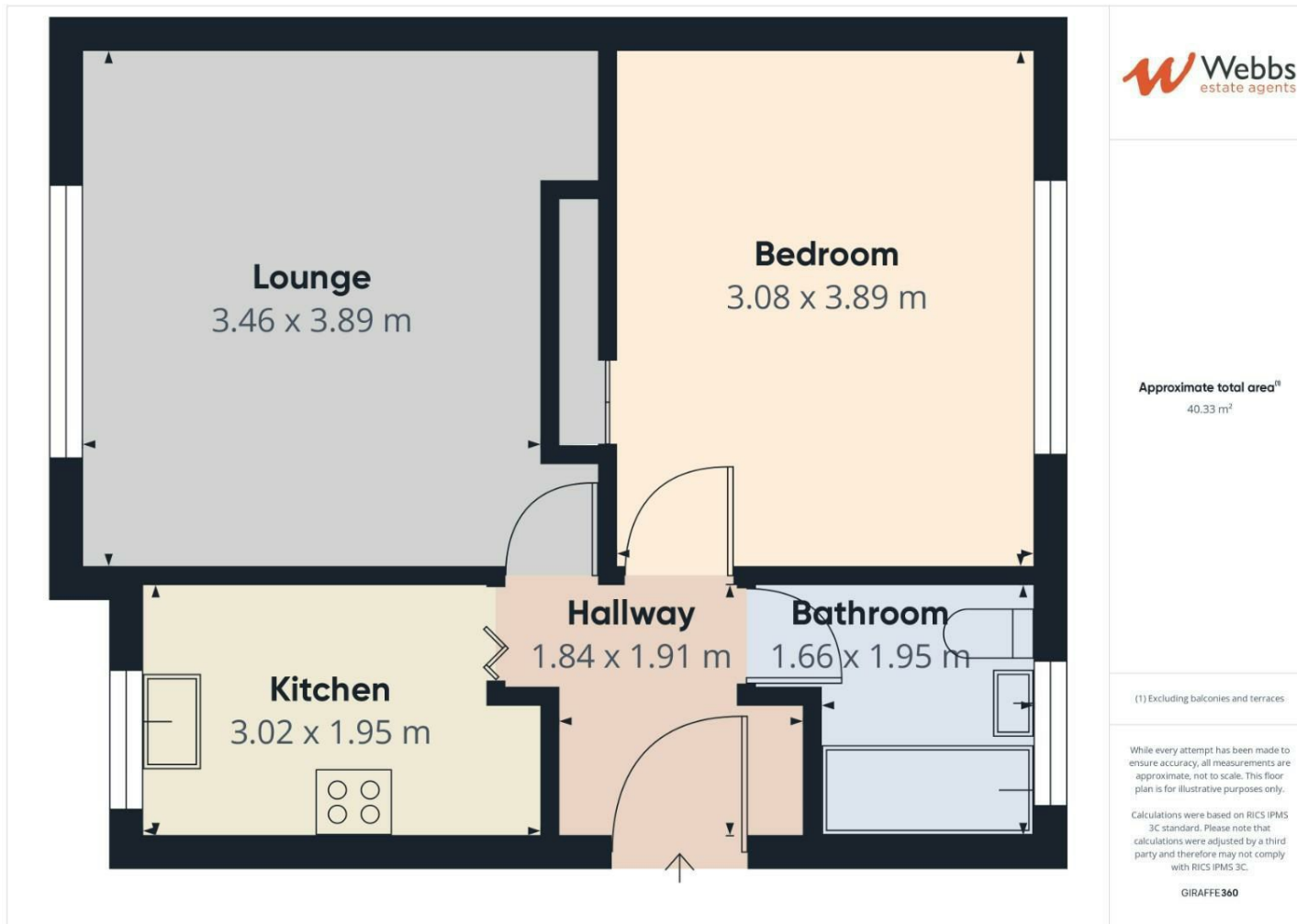
Rooms and Dimensions

PROPERTY DETAILS:

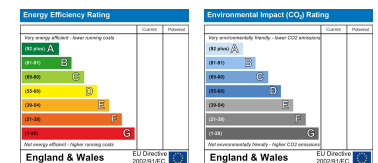
Please Note







Webbs Estate Agents - endeavour to maintain accurate depictions of properties in Virtual Tours, Floor Plans and descriptions, however, these are intended only as a guide and purchasers must satisfy themselves by personal inspection.



153 Avon Road, Cannock, WS11 1LF

Tel: 01543 468846 | Email: sales@webbsestateagents.co.uk | www.webbestateagents.co.uk