



Webbs

Helping people move since 1994

Miners Way | Cannock | WS12 4WH

Offers Over £325,000

 **Webbs**
estate agents

Summary

** BEAUTIFUL FOUR BED END TOWN HOUSE ** SPACIOUS ROOMS ** FIELD VIEWS ** TWO EN SUITES ** FAMILY BATHROOM ** TWO RECEPTION ROOMS ** PRIVATE DRIVE **

WEBBS ESTATE AGENTS have the pleasure to present for sale a simply stunning four bed end town house . If space is what you need then this house certainly fits the bill, every room is double making this the ideal family home. The property briefly comprises of two good sized reception rooms, guest w.c, kitchen/diner . four double bedrooms, two en-suites bathrooms , family bathroom . The property boasts idyllic stunning views

EXTERNALLY

The garden is a wonderful fully enclosed space with astro turf , to the front there is a private drive with beautiful filed views.. This delightful family offers not only contemporary living with a wealth of space . The location is perfect for summer evenings due to the field views the Deer often graze nearby . The local schools are all just a short walk away . Local amenities are within easy reach ,

** VIEWING IS ESSENTIAL TO APPRECIATE THE SIZE AND CONDITION **

Key Features

- FOUR DOUBLE BEDROOMS
- BREAKFAST KITCHEN
- FAMILY BATHROOM
- PRIVATE DRIVE
- TWO RECEPTION ROOMS
- GUEST W.C
- PRIVATE ENCLOSED REAR GARDEN
- FIELD VIEWS

Rooms and Dimensions

ENTRANCE HALLWAY

18'2" x 3'6" (5.545 x 1.085)

GUEST W,C

BREAKFAST KITCHEN

15'10" x 13'2" (4.842 x 4.024)

SITTING ROOM CURRENTLY PLAY ROOM

13'10" x 8'9" (4.225 x 2.689)

FIRST FLOOR LANDING

LOUNGE

15'11" x 13'1" (4.868 x 4.012)

MASTER BEDROOM

14'1" x 9'3" (4.299 x 2.834)

JACK & JILL BATHROOM

6'5" x 6'4" (1.974 x 1.947)

SECOND FLOOR LANDING

BEDROOM TWO

12'10" x 9'1" (3.930 x 2.770)

EN SUITE SHOWER ROOM

BEDROOM THREE

11'11" x 9'1" (3.638 x 2.785)

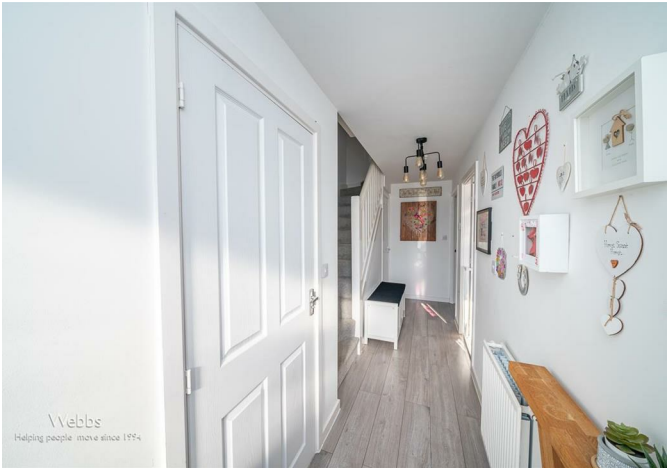
BEDROOM FOUR

9'7" x 16'1" (2.945 x 4.910)

FAMILY BATHROOM

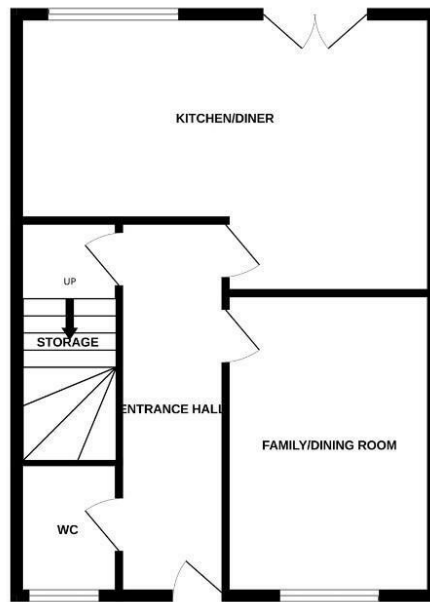
Agents Note C

Identification checks - C





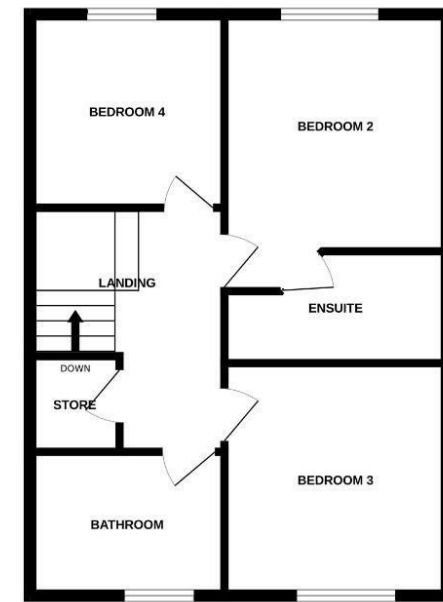
GROUND FLOOR



1ST FLOOR

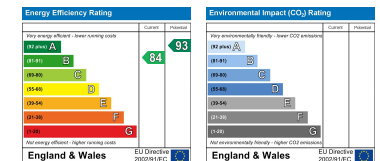


2ND FLOOR



Whilst every attempt has been made to ensure the accuracy of the floorplan contained here, measurements of doors, windows, rooms and any other items are approximate and no responsibility is taken for any error, omission or mis-statement. This plan is for illustrative purposes only and should be used as such by any prospective purchaser. The services, systems and appliances shown have not been tested and no guarantee as to their operability or efficiency can be given.
Made with Metropix ©2025

Webbs Estate Agents - endeavour to maintain accurate depictions of properties in Virtual Tours, Floor Plans and descriptions, however, these are intended only as a guide and purchasers must satisfy themselves by personal inspection.



153 Avon Road, Cannock, WS11 1LF

Tel: 01543 468846 | Email: sales@webbestateagents.co.uk | www.webbestateagents.co.uk

Webbs
estate agents