



Bevan Lee Road | Cannock | WS11 4PT
Offers In The Region Of £175,000



Summary

**** SEMI DETACHED FAMILY HOME ** POPULAR LOCATION ** VIEWING ADVISED ** TWO BEDROOMS ** FAMILY BATHROOM ** LOUNGE DINER ** KITCHEN ** GARDENS ** DRIVEWAY ** GARAGE ****

WEBBS ESTATE AGENTS have pleasure in offering this delightful two-bedroom house offers a perfect opportunity for first-time buyers seeking a spacious and well-presented home. Built in 1955, the property spans an impressive 936 square feet, providing ample living space for comfort and convenience. Upon entering, you are welcomed into a generous lounge/diner there is a spacious, well-equipped kitchen, making it a joy to prepare meals and enjoy family gatherings. The two good-sized bedrooms offer a peaceful retreat, ensuring restful nights and a pleasant atmosphere. The family bathroom is thoughtfully designed, catering to the needs of modern living. Outside, the property boasts a lovely garden to the rear, perfect for enjoying sunny afternoons or hosting barbecues with friends and family. Additionally, the garage and driveway providing ample parking.

This property is not only well-situated but also offers a wonderful blend of space and functionality, making it an ideal choice for those looking to step onto the property ladder. With its charming features and practical layout, this home is sure to impress. Don't miss the chance to make this delightful house your new home.

Key Features

- SEMI DETACHED HOME
- TWO DOUBLE BEDROOMS
- LOUNGE DINER
- DETACHED GARAGE
- DRIVEWAY
- INTERNAL VIEWING ADVISED
- FAMILY BATHROOM
- KITCHEN
- GARDENS

Rooms and Dimensions

AWAITING VENDOR APPROVAL

ENTRANCE PORCH

HALLWAY

GUEST WC

LOUNGE DINER

18'9" x 11'8" (5.72m x 3.56m)

KITCHEN

12'7" x 11'5" (3.86m x 3.48m)

LANDING

BEDROOM ONE

11'3" x 11'3" max (3.45m x 3.43m max)

BEDROOM TWO

15'3" x 8'7" (4.65m x 2.62m)

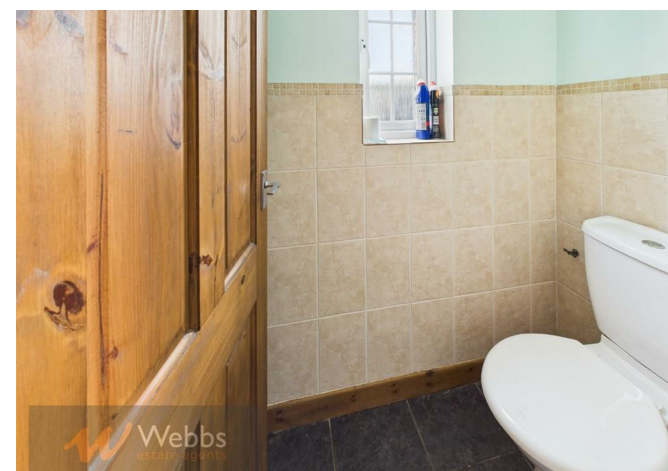
FAMILY BATHROOM

DETACHED GARAGE

FULLY ENCLOSED GARDENS

PRIVATE DRIVEWAY

Identification checks - C





Webbs Estate Agents - endeavour to maintain accurate depictions of properties in Virtual Tours, Floor Plans and descriptions, however, these are intended only as a guide and purchasers must satisfy themselves by personal inspection.

