



Wimblebury Road | Cannock | WS12 0FW

Asking Price £240,000



Summary

****THREE BEDROOM SEMI DETACHED HOME**PARKING TO THE REAR**KITCHEN DINER**DUAL ASPECT LOUNGE**THREE GENEROUS BEDROOMS**MASTER BEDROOM OFFERING WALK IN WARDROBE**FRONT AND REAR GARDEN**POPULAR LOCATION**VIEWING IS ESSENTIAL****

Nestled in a sought-after location, this beautifully presented three-bedroom semi-detached home on Wimblebury Road offers spacious and stylish living throughout.

A private, lawned front garden welcomes you to the property, leading into a bright and inviting entrance hall. The dual-aspect lounge is filled with natural light, providing a warm and comfortable living space. The heart of the home is the generously sized kitchen diner, perfect for both family meals and entertaining, with the added convenience of a guest WC.

Upstairs, you'll find three well-proportioned bedrooms, including a stunning master bedroom with a walk-in wardrobe. The family bathroom is modern and well-appointed, catering to the needs of a busy household.

Key Features

- THREE BEDROOM SEMI DETACHED HOME
- DUAL ASPECT LOUNGE DINER
- LANDSCAPED REAR GARDEN
- GENEROUSLY SIZED BEDROOMS
- POPULAR LOCATION
- KITCHEN DINER
- LAWNED FRONT GARDEN
- ALLOCATED PARKING TO THE REAR
- WALK IN WARDORBE TO MASTER BEDROOM
- CALL WEBBS TO SECURE YOUR VIEWINGS TODAY!!!!

Rooms and Dimensions

Identification Checks B

Entrance Hall

Kitchen Diner

14'8" x 16'8" (4.480m x 5.081m)

Lounge

16'0" x 10'0" (4.899m x 3.054m)

Guest WC

Bedroom One

12'9" x 9'6" (3.899m x 2.908m)

Bedroom Two

13'6" x 10'3" (4.127m x 3.137m)

Bedroom Three

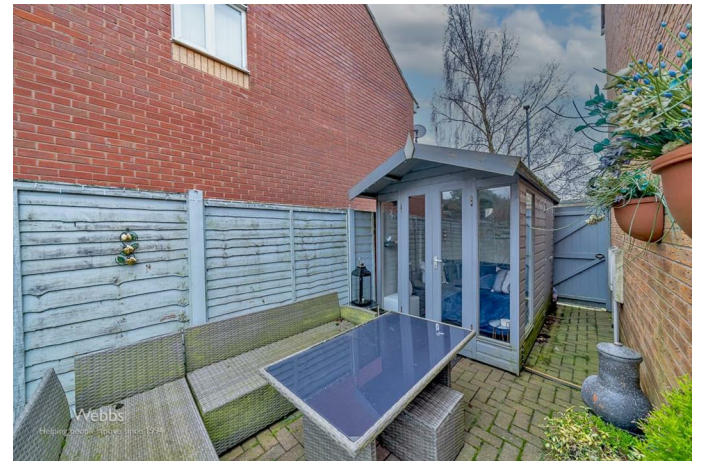
7'8" x 6'7" (2.341m x 2.032m)

Family Bathroom

6'3" x 5'10" (1.922m x 1.803m)

Identification checks - C





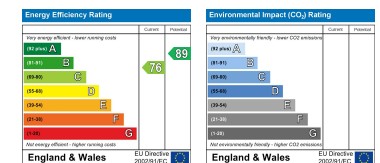
GROUND FLOOR

1ST FLOOR



Whilst every attempt has been made to ensure the accuracy of the floorplan contained here, measurements of doors, windows, rooms and any other items are approximate and no responsibility is taken for any error, omission or mis-statement. This plan is for illustrative purposes only and should be used as such by any prospective purchaser. The services, systems and appliances shown have not been tested and no guarantee as to their operability or efficiency can be given.
Made with Metropix ©2025

Webbs Estate Agents - endeavour to maintain accurate depictions of properties in Virtual Tours, Floor Plans and descriptions, however, these are intended only as a guide and purchasers must satisfy themselves by personal inspection.



153 Avon Road, Cannock, WS11 1LF

Tel: 01543 468846 | Email: sales@webbestateagents.co.uk | www.webbestateagents.co.uk