



Heath Gap Road | Cannock | WS11 6DY
Offers In The Region Of £240,000



Summary

**** WOW ** STUNNING SEMI-DETACHED HOME ** SHOWHOME STANDARD THROUGHOUT ** THREE BEDROOMS ** STUNNING FAMILY BATHROOM ** STUNNING KITCHEN DINER ** SPACIOUS LOUNGE ** CONSERVATORY ** GUEST WC ** GARAGE ** PRIVATE DRIVEWAY ** LANDSCAPED REAR GARDEN ** VIEWING IS STRONGLY ADVISED ****

Webbs Estate Agents have pleasure in offering this very well-presented extended traditional semi-detached home, situated in a popular location, being close to all local amenities, shops and schools.

Briefly comprises a through hallway, guest WC, spacious lounge, REFITTED kitchen diner and conservatory. On the first floor are two double bedrooms, a REFITTED family bathroom and stairs to the second floor leading to a bedroom. Externally there is a private driveway, garage and generous landscaped gardens.

VIEWING STRONGLY ADVISED

Key Features

- FABULOUS FAMILY HOME
- POPULAR LOCATION
- REFITTED FAMILY BATHROOM
- REFITTED KITCHEN
- DRIVEWAY & GARAGE
- VERY WELL PRESENTED
- THREE DOUBLE BEDROOMS
- LOUNGE, DINING ROOM
- CONSERVATORY
- GENEROUS LANDSCAPED GARDEN

Rooms and Dimensions

THROUGH HALLWAY

SPACIOUS LOUNGE

12'2" x 10'5" (3.72m x 3.20m)

REFITTED KITCHEN DINER

10'5" x 19'2" (3.20m x 5.86m)

CONSERVATORY

10'5" x 10'5" (3.20m x 3.20m)

LANDING

BEDROOM ONE

13'8" x 10'7" (4.19m x 3.25m)

BEDROOM TWO

10'5" x 9'3" (3.18m x 2.84m)

REFITTED FAMILY BATHROOM

ATTIC BEDROOM

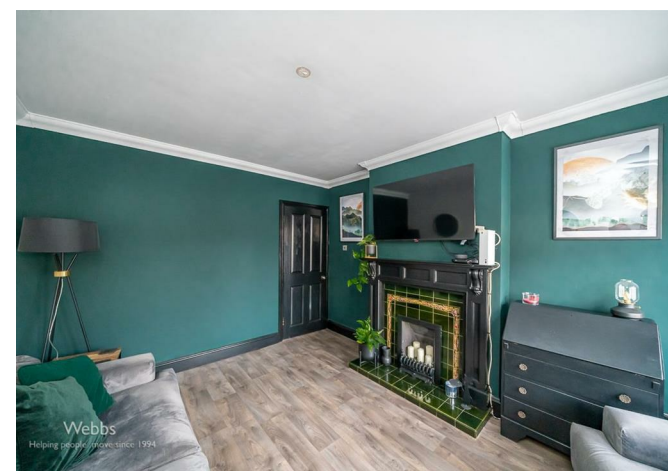
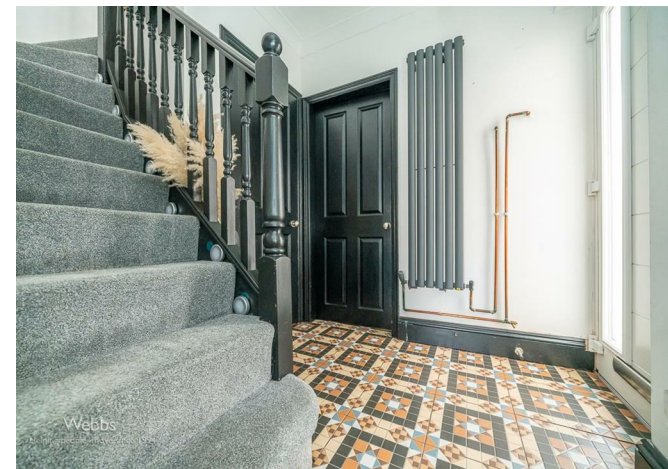
9'6" x 7'5" (2.92m x 2.28m)

GARAGE

PRIVATE DRIVEWAY

GENEROUS LANDSCAPED GARDENS

Identification checks - C

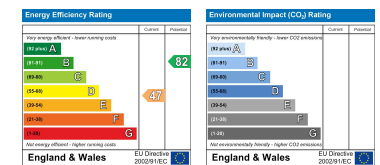






Whilst every attempt has been made to ensure the accuracy of the floorplan contained here, measurements of doors, windows, rooms and any other items are approximate and no responsibility is taken for any error, omission or mis-statement. This plan is for illustrative purposes only and should be used as such by any prospective purchaser. The services, systems and appliances shown have not been tested and no guarantee as to their operability or efficiency can be given.
Made with Metropix ©2024

Webbs Estate Agents - endeavour to maintain accurate depictions of properties in Virtual Tours, Floor Plans and descriptions, however, these are intended only as a guide and purchasers must satisfy themselves by personal inspection.



153 Avon Road, Cannock, WS11 1LF

Tel: 01543 468846 | Email: sales@webbestateagents.co.uk | www.webbestateagents.co.uk

