



Bradford Street | Walsall | WS1 3QD

£595 PCM

 **Webbs**
estate agents

Summary

Webbs Estate Agents are pleased to bring to market this spacious and well presented studio apartment, situated in the heart of Walsall town centre, just a stones throw from local amenities. With excellent public transport links and within easy access of major road networks.

In brief, the accommodation comprises of; shared reception hallway, entrance hall, large open plan living space, generous breakfast kitchen and shower room.

Parking available upon request - Please call for details.

Unfortunately, Pets & Smokers Will Not Be Considered.

A water charge applies.

Key Features

- Well Presented & Spacious Studio Flat
- Open Plan Living Space
- Shower Room
- Water Charges Apply
- Town Centre Location
- Breakfast Kitchen
- Parking Available on Request

Rooms and Dimensions

PROPERTY DETAILS:

Kitchen/Dining room

12'9" x 7'4" (3.90 x 2.25)

Bathroom

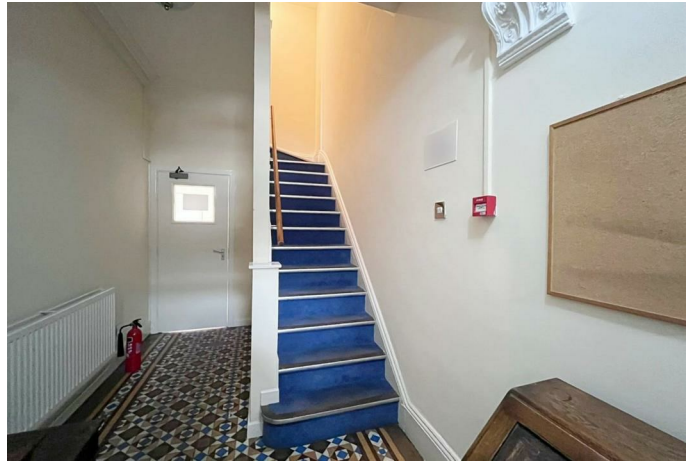
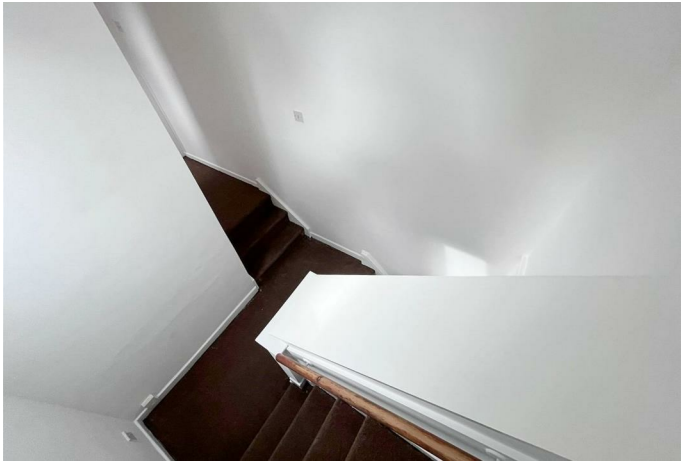
5'1" x 6'6" (1.55 x 2.00)

Bedroom/ living room

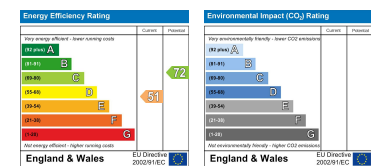
11'5" min 23'0" max x 8'2" min 17'7" max (3.50 min 7.02 max x 2.49 min 5.37 max)

Please Note





Webbs Estate Agents - endeavour to maintain accurate depictions of properties in Virtual Tours, Floor Plans and descriptions, however, these are intended only as a guide and purchasers must satisfy themselves by personal inspection.



153 Avon Road, Cannock, WS11 1LF

Tel: 01543 468846 | Email: sales@webbestateagents.co.uk | www.webbestateagents.co.uk

