



Bromley Close | Hednesford, Cannock | WS12 4QY

Offers Over £280,000



Summary

**** NO CHAIN **EXTENDED FAMILY HOME ** FOUR BEDROOMS ** BATHROOM & ENSUITE ** SPACIOUS LOUNGE ** EXTENDED KITCHEN DINER ** CONSERVATORY ** UTILITY ROOM & GUEST WC ** GARDEN ROOM / CABIN ** PRIVATE REAR GARDEN ** BLOCK PAVED DRIVEWAY ** POPULAR LOCATION ** VIEWING IS ESSENTIAL ****

Webbs Estate Agents have pleasure in offering this extended semi-detached home, situated in a popular location, being close to all local amenities, shops and schools. Briefly consists of a porch, Entrance Hall, Lounge, Kitchen/ Diner, Conservatory, Utility Room, and Guest WC on the ground floor. The first floor has four good-sized bedrooms with the master having an ensuite. There is also a Family Bathroom. Externally the property has a rear garden, a fully insulated garden room/cabin with power and lighting, a blocked paved driveway and a garage.

Key Features

- NO CHAIN
- FOUR BEDROOMS
- SPACIOUS LOUNGE
- CONSERVATORY
- PRIVATE REAR GARDEN
- EXTENDED FAMILY HOME
- BATHROOM & ENSUITE
- EXTENDED KITCHEN DINER
- UTILITY ROOM & GUEST WC
- BLOCK PAVED DRIVEWAY

Rooms and Dimensions

ENTRANCE HALLWAY

LOUNGE

17'7" x 10'10" (5.36m x 3.31m)

EXTENDED KITCHEN DINER

9'6" x 22'4" (2.92m x 6.83m)

CONSERVATORY

9'6" x 8'9" (2.90m x 2.69m)

UTILITY ROOM

6'0" x 4'5" (1.85m x 1.35m)

GUEST WC

LANDING

MASTER BEDROOM

11'1" x 10'7" (3.40m x 3.24m)

ENSUITE SHOWER ROOM

BEDROOM TWO

7'3" x 9'1" (2.21m x 2.78m)

BEDROOM THREE

7'4" x 15'4" (2.25m x 4.68m)

BEDROOM FOUR

6'5" x 9'0" (1.97m x 2.75m)

FAMILY BATHROOM

GARAGE

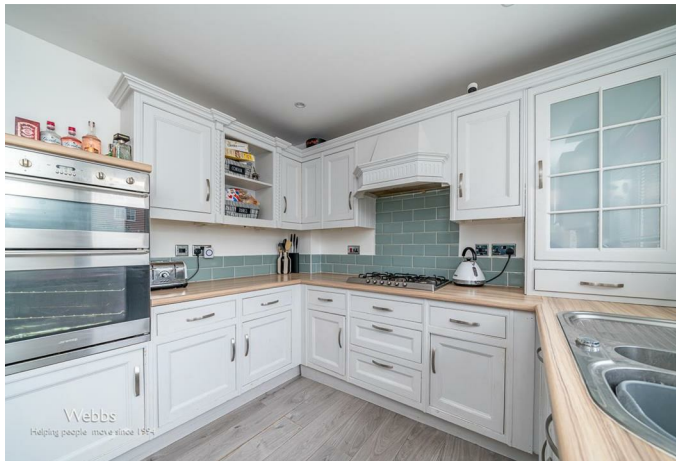
16'10" x 7'6" (5.15m x 2.31m)

REAR GARDEN

BLOCK PAVED DRIVEWAY

Identification checks - C

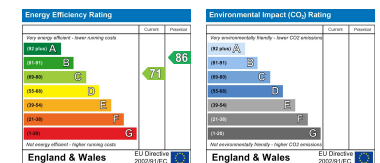






Whilst every attempt has been made to ensure the accuracy of the floorplan contained here, measurements of doors, windows, rooms and any other items are approximate and no responsibility is taken for any error, omission or mis-statement. This plan is for illustrative purposes only and should be used as such by any prospective purchaser. The services, systems and appliances shown have not been tested and no guarantee as to their operability or efficiency can be given.
Made with Metropix ©2024

Webbs Estate Agents - endeavour to maintain accurate depictions of properties in Virtual Tours, Floor Plans and descriptions, however, these are intended only as a guide and purchasers must satisfy themselves by personal inspection.



153 Avon Road, Cannock, WS11 1LF

Tel: 01543 468846 | Email: sales@webbestateagents.co.uk | www.webbestateagents.co.uk

Webbs
estate agents