



Webbs  
Helping people move since 1995

Edison Close | Cannock | WS12 4RB

£215,000

 Webbs  
estate agents

## Summary

**\*\* SOUGHT AFTER LOCATION \*\* THREE BEDROOMS \*\* SPACIOUS LOUNGE \*\* KITCHEN DINER \*\* EXCELLENT SCHOOLS \*\* CLOSE TO CANNOCK CHASE \*\* IDEAL FOR HEDNESFORD TOWN AND TRAIN STATION \*\* CONSERVATORY \*\* LOW MAINTENANCE REAR GARDEN \*\* AMPLE OFF ROAD PARKING \*\* VIEWING ESSENTIAL \*\***

Webbs Estate Agents are pleased to offer for sale a spacious home in the desirable location of Hednesford, offering easy access to Cannock Chase, Hednesford Town Centre, train station and excellent school catchments.

In brief consisting of side entrance to the spacious lounge, a kitchen diner with integrated fridge, freezer, oven, hob and extractor, the patio door opens into the conservatory overlooking the rear garden.

To the first floor there are three bedrooms and family bathroom, externally the property is accessed via block paved driveway which provides ample off road parking, double gated access to the side driveway, garage and garden.

VIEWING ADVISED

## Key Features

- SPACIOUS LOUNGE
- CONSERVATORY
- CLOSE TO CANNOCK CHASE
- CLOSE TO HEDNESFORD TOWN CENTRE
- THREE BEDROOMS
- DRIVEWAY
- KITCHEN/DINER
- LOW MAINTENANCE REAR GARDEN

## Rooms and Dimensions

### Kitchen / Diner

9'10 x 14'6 (3.00m x 4.42m)

### Lounge

13'3 x 14'5 (4.04m x 4.39m)

### Conservatory

9'10 x 7'7 (3.00m x 2.31m)

### Landing

### Bedroom One

12'2 x 8'5 (3.71m x 2.57m)

### Bedroom Two

8'4 x 8'4 (2.54m x 2.54m)

### Bedroom Three

9'1 x 6'0 (2.77m x 1.83m)

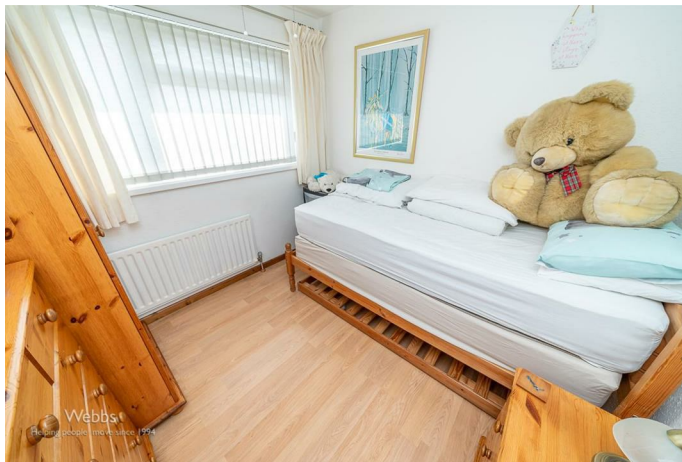
### Bathroom

5'6 x 5'10 (1.68m x 1.78m)

### Rear Garden

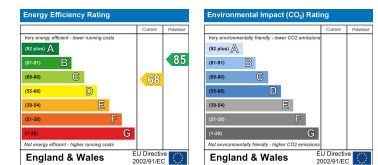
### Driveway







Webbs Estate Agents - endeavour to maintain accurate depictions of properties in Virtual Tours, Floor Plans and descriptions, however, these are intended only as a guide and purchasers must satisfy themselves by personal inspection.



153 Avon Road, Cannock, WS11 1LF

Tel: 01543 468846 | Email: sales@webbestateagents.co.uk | www.webbestateagents.co.uk

