



Webbs

Helping people move since 1994

Brooklands Avenue | Great Wyrley, Walsall | WS6 6LG

Offers In The Region Of £250,000

 **Webbs**
estate agents

Summary

**** OUTSTANDING POTENTIAL ** MOTIVATED SELLER ** SPACIOUS SEMI DETACHED HOME ** SOUGHT AFTER LOCATION ** OVERLOOKING THE BROOK ** THREE DOUBLE BEDROOMS ** WET ROOM ** SPACIOUS LOUNGE DINER ** KITCHEN DINER ** DETACHED GARAGE ** CAR PORT ** LANDSCAPED GARDENS ** PRIVATE BLOCK PAVED DRIVEWAY ****

Webbs Estate Agents have pleasure in offering this spacious semi-detached home, situated in a popular location, occupying a fabulous position and overlooking the brook, being close to all local amenities, shops and schools. Briefly comprises a through hallway, spacious lounge diner, kitchen diner and wet room on the ground floor. On the first floor, the landing leads to three double bedrooms. Externally there is a generous private driveway, car port, detached garage and landscaped gardens. VIEWING IS ADVISED !!

Key Features

- OUTSTANDING POTENTIAL
- VIEWING IS ADVISED
- WET ROOM
- SPAICOUS LOUNGE DINER
- PRIVATE DRIVEWAY
- SPACIOUS FAMILY HOME
- THREE DOUBLE BEDROOMS
- KITCHEN DINER
- DETACHED GARAGE & CAR PORT

Rooms and Dimensions

THROUGH HALLWAY

WET ROOM

SPACIOUS LOUNGE DINER

11'9" x 22'5" (3.59m x 6.85m)

KITCHEN DINER

7'4" x 17'10" (2.25m x 5.46m)

LANDING

BEDROOM ONE

9'6" x 14'10" (2.90m x 4.54m)

BEDROOM TWO

10'7" x 10'2" (3.23m x 3.10m)

BEDROOM THREE

6'0" x 7'8" (1.85m x 2.35m)

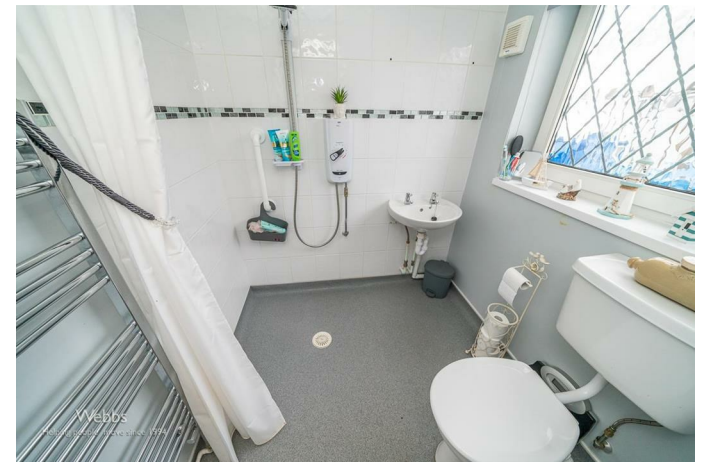
CAR PORT

GARAGE

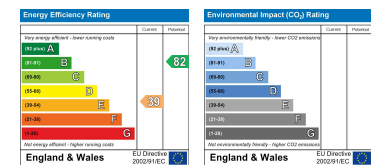
REAR GARDEN

PRIVATE DRIVEWAY





Webbs Estate Agents - endeavour to maintain accurate depictions of properties in Virtual Tours, Floor Plans and descriptions, however, these are intended only as a guide and purchasers must satisfy themselves by personal inspection.



153 Avon Road, Cannock, WS11 1LF

Tel: 01543 468846 | Email: sales@webbestateagents.co.uk | www.webbestateagents.co.uk

