



Webbs

Helping people move since 1894

Thorpe Avenue | Burntwood | WS7 1NF

£280,000

 Webbs
estate agents

Summary

** SOUGHT AFTER LOCATION ** THREE BEDROOMS ** SOLAR PANELS AND HEAT PUMP ** LOUNGE AND SEPERATE DINING ROOM ** CONSERVATORY ** LARGE REAR GARDEN ** AMPLE OFF ROAD PARKING ** CONVERTED GARAGE ** EXCELLENT SCHOOLS AND TRANSPORT LINKS ** CLOSE TO LOCAL SHOPS AND AMENTIES ** IDEAL FOR CHASEWATER COUNTRY PARK **

Webbs Estate Agents are pleased to offer for sale a semi-detached home ideal for Chasewater Country Park, excellent schools and transport links, local shops and the amenities of Burntwood Town Centre.

In brief consisting of an entrance porch, lounge with stairs to the first floor and opening to the dining room, conservatory and kitchen, the garage has been converted and now offers a craft/games room/office and a storage room.

To the first floor there are three bedrooms and a family bathroom, the property sits on an enviable plot offering ample off-road parking and a large rear garden. VIEWING ADVISED TO FULLY APPRECIATE THE SIZE AND LOCATION OF THE PROPERTY ON OFFER.

Key Features

- SOUGHT AFTER LOCATION
- THREE BEDROOMS
- EXCELLENT SCHOOLS AND TRANSPORT LINKS
- LARGE REAR GARDEN
- CLOSE TO CHASEWATER COUNTRY PARK
- SOLAR PANELS AND HEAT PUMP
- THREE RECEPTION ROOMS
- MODERN KITCHEN
- AMPLE OFF ROAD PARKING
- VIEWING ADVISED

Rooms and Dimensions

ENTRANCE PORCH

LOUNGE

14'4" x 10'3" (4.371 x 3.133)

DINING ROOM

13'1" x 10'3" (4.002 x 3.127)

CONSERVATORY

11'8" x 9'9" (3.563 x 2.979)

KITCHEN

9'7" x 7'2" (2.935 x 2.202)

CRAFT/STUDY/PLAYROOM

9'0" x 7'3" (2.760 x 2.217)

LANDING

BEDROOM ONE

14'2" x 10'0" (4.334 x 3.067)

BEDROOM TWO

10'5" x 9'11" (3.183 x 3.029)

BEDROOM THREE

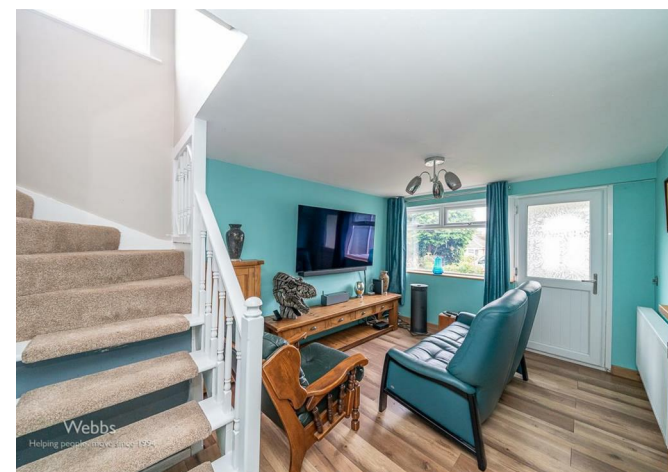
11'2" x 7'11" (3.414 x 2.424)

BATHROOM

7'2" x 7'1" (2.197 x 2.168)

LARGE REAR GARDEN

LARGE FRONTAGE WITH DRIVEWAY







Webbs Estate Agents - endeavour to maintain accurate depictions of properties in Virtual Tours, Floor Plans and descriptions, however, these are intended only as a guide and purchasers must satisfy themselves by personal inspection.

Energy Efficiency Rating		Environmental Impact (CO ₂) Rating																					
Current	Potential	Current	Potential																				
<table border="1"> <tr><td>Very energy efficient - lower energy costs</td></tr> <tr><td>15-20 A</td></tr> <tr><td>15-20 B</td></tr> <tr><td>15-40 C</td></tr> <tr><td>15-40 D</td></tr> <tr><td>15-55 E</td></tr> <tr><td>15-65 F</td></tr> <tr><td>15-75 G</td></tr> </table>	Very energy efficient - lower energy costs	15-20 A	15-20 B	15-40 C	15-40 D	15-55 E	15-65 F	15-75 G	<table border="1"> <tr><td>86</td></tr> <tr><td>67</td></tr> </table>	86	67	<table border="1"> <tr><td>Very low embodied carbon - lower CO₂ emissions</td></tr> <tr><td>10-20 A</td></tr> <tr><td>10-20 B</td></tr> <tr><td>10-30 C</td></tr> <tr><td>10-30 D</td></tr> <tr><td>10-40 E</td></tr> <tr><td>10-40 F</td></tr> <tr><td>10-40 G</td></tr> </table>	Very low embodied carbon - lower CO ₂ emissions	10-20 A	10-20 B	10-30 C	10-30 D	10-40 E	10-40 F	10-40 G	<table border="1"> <tr><td>86</td></tr> <tr><td>67</td></tr> </table>	86	67
Very energy efficient - lower energy costs																							
15-20 A																							
15-20 B																							
15-40 C																							
15-40 D																							
15-55 E																							
15-65 F																							
15-75 G																							
86																							
67																							
Very low embodied carbon - lower CO ₂ emissions																							
10-20 A																							
10-20 B																							
10-30 C																							
10-30 D																							
10-40 E																							
10-40 F																							
10-40 G																							
86																							
67																							
<small>Not energy efficient - higher energy costs</small> <small>England & Wales</small>	<small>EU Directive 2002/91/EC</small>	<small>Not environmentally friendly - higher CO₂ emissions</small> <small>England & Wales</small>	<small>EU Directive 2002/91/EC</small>																				

153 Avon Road, Cannock, WS11 1LF

Tel: 01543 468846 | Email: sales@webbestateagents.co.uk | www.webbestateagents.co.uk

