



Meadowsweet Way | Wimblebury, Cannock | WS12 2GS

Offers In Excess Of £365,000



## Summary

**\*\* FABULOUS HOME \*\* FOUR BEDROOMS \*\* EN-SUITE \*\* FAMILY BATHROOM \*\* STUNNING MODERN KITCHEN DINER \*\* TWO RECEPTION ROOMS \*\* POPULAR LOCATION \*\* EXCELLENT SCHOOL CATCHMENTS \*\* VIEWING ADVISED \*\***

Webbs Estate Agents are pleased to offer for sale a very well-presented and spacious detached home, with excellent school catchments, ideal for local shops and amenities, and major transport links.

In brief consisting of an entrance hallway, guest WC, spacious lounge, conservatory and STUNNING kitchen diner. On the first floor there are four bedrooms which three are doubles and, a family bathroom, the master bedroom has an en-suite shower room, externally the property has an enclosed rear garden, garage, off-road parking is provided by a driveway, EARLY VIEWING IS ADVISED

## Key Features

## Rooms and Dimensions

### Entrance Hallway

### Kitchen

15'7 x 7'10 (4.75m x 2.39m)

### Dining Room

12'7 x 7'9 (3.84m x 2.36m)

### Lounge

12'0 x 14'4 (3.66m x 4.37m)

### Conservatory

9'0 x 11'4 (2.74m x 3.45m)

### Guest WC

### Landing

### Bedroom One

13' 11 x 11'2 (3.96m x 3.40m)

### Ensuite

### Bedroom Two

12'4 x 8'0 (3.76m x 2.44m)

### Bedroom Three

11'3 x 8'1 (3.43m x 2.46m)

### Bedroom Four

8'11 x 7'1 (2.72m x 2.16m)

### Family Bathroom

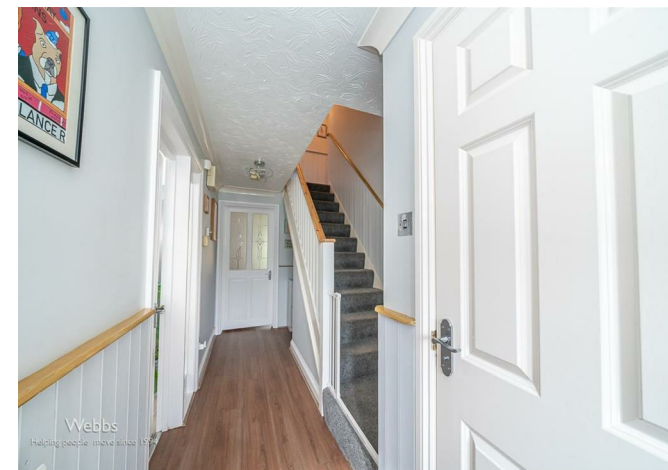
5'3 x 5'6 (1.60m x 1.68m)

### Driveway

### Garage

### Rear Garden

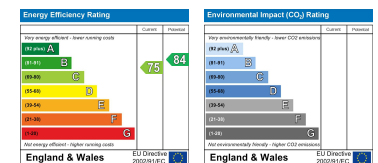
### Identification checks - C







Webbs Estate Agents - endeavour to maintain accurate depictions of properties in Virtual Tours, Floor Plans and descriptions, however, these are intended only as a guide and purchasers must satisfy themselves by personal inspection.



153 Avon Road, Cannock, WS11 1LF

Tel: 01543 468846 | Email: sales@webbsestateagents.co.uk | www.webbestateagents.co.uk