



Webbs

Helping people move since 1994

**Florence Street | Hednesford, Cannock | WS12 4BA**

**Open To Offers £235,000**

 **Webbs**  
estate agents

## Summary

**\*\* POPULAR LOCATION \*\* ENVIABLE CORNER PLOT \*\* THREE BEDROOMS \*\* \*\* GARAGE \*\* FRONT AND REAR DRIVEWAYS \*\* IDEAL FOR TOWN CENTRE AND TRAIN STATION \*\* CLOSE TO CANNOCK CHASE \*\* PLANNING PERMISSON FOR EXTENSION \*\* VIEWING ADVISED \*\***

WEBBS ESTATE AGENTS are pleased to offer for sale a detached home occupying an enviable corner plot and being in excellent school catchments, close to Cannock Chase, Hednesford Town Centre and Train Station.

In brief consisting of an entrance hallway, modern lounge with a media wall, the kitchen diner has patio doors to the rear garden and is partially finished, with an external door to the garage and garden.

To the first floor there are three bedrooms and refitted bathroom, externally this property is set on a corner plot offering front, side and rear gardens, having a front and rear driveway providing ample parking, the property has planning permission for a rear extension and the concrete pad is already done. this property IS BURSTING WITH POTENTIAL and viewing is recommended to appreciate the plot, location and size.

## Key Features

- ENVIABLE CORNER PLOT
- LOUNGE WITH MEDIA WALL
- GARAGE
- RE-FITTED BATHROOM
- PLANNING PERMISSION FOR EXTENSION
- CLOSE TO CANNOCK CHASE
- THREE BEDROOMS
- DRIVEWAY
- KITCHEN/DINER

## Rooms and Dimensions

### ENTRANCE HALLWAY

### LOUNGE WITH MEDIA WALL

14'0 x 8'8 (4.27m x 2.64m)

### KITCHEN DINER

9'0 x 16'6 (2.74m x 5.03m)

### INNER HALLWAY

### GARAGE

23'0 x 8'1 (7.01m x 2.46m)

### LANDING

### BEDROOM ONE

14'0 x 9'3 (4.27m x 2.82m)

### BEDROOM TWO

9'0 x 9'4 (2.74m x 2.84m)

### BEDROOM THREE

8'0 x 6'10 (2.44m x 2.08m)

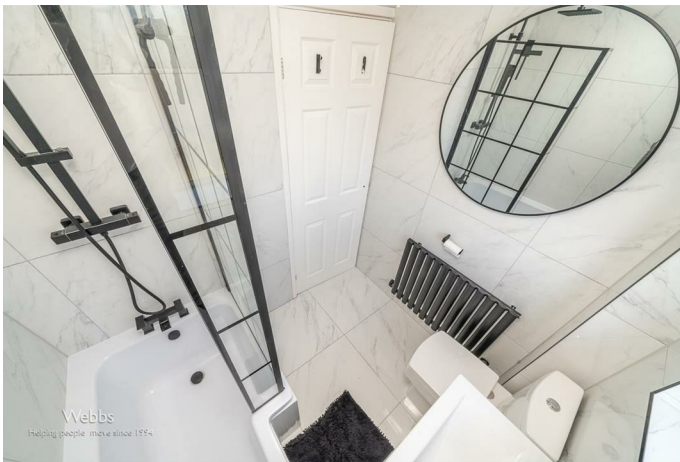
### REFITTED BATHROOM

5'0 x 6'8 (1.52m x 2.03m)

### FRONT SIDE AND REAR GARDENS

### DRIVEWAY







Webbs Estate Agents - endeavour to maintain accurate depictions of properties in Virtual Tours, Floor Plans and descriptions, however, these are intended only as a guide and purchasers must satisfy themselves by personal inspection.

