



Edgemoor Meadow | Cannock | WS12 3XY

£1,500 PCM

 Webbs
estate agents

Summary

Webbs Estate Agents are delighted to offer this spacious and immaculately presented detached family home situated in a quiet cul-de-sac on a very popular residential development, close to local amenities, shops and schools.

In brief, this stunning property comprises of; lounge, dining room, sitting room, conservatory, modern fitted kitchen, utility room, guest wc and study. On the first floor there is a large primary bedroom with en-suite shower room, four further bedrooms and a contemporary family bathroom.

Externally, there is a mature garden with patio seating area to the rear and garden with driveway to the front. The garage has been converted to a storage area.

** Please note that furnishings are for illustration purpose only **

Unfortunately, pets and smokers will not be considered.

Key Features

- Immaculately Presented Detached House
- Lounge, Dining Room & Sitting Room
- Study & Store Room
- En-Suite & Family Bathroom
- EPC Band D | Council Tax Band D
- Popular Residential Development
- Kitchen, Utility Room & Guest WC
- Five Bedrooms
- Gardens & Driveway
- Holding Deposit £346 | Security Deposit £1730

Rooms and Dimensions

PROPERTY DETAILS:

Ground Floor

Entrance Hall

Guest WC

Lounge

12'11" x 15'8" (into bay) (3.96 x 4.78 (into bay))

Dining Room

8'7" x 10'9" (2.64 x 3.28)

Reception Room

7'10" x 16'4" (2.41 x 4.98)

Kitchen

7'1" x 10'9" (2.16 x 3.28)

Utility Room

5'8" x 8'0" (1.73 x 2.44)

Conservatory

10'2" x 10'2" (3.10 x 3.10)

First Floor

Bedroom One

9'10" x 10'5" (3.0 x 3.18)

En-Suite

Bedroom Two

7'10" x 11'9" (2.41 x 3.6)

Bedroom Three

8'0" x 9'2" (2.44 x 2.8)

Bedroom Four

7'8" x 8'5" (2.36 x 2.57)

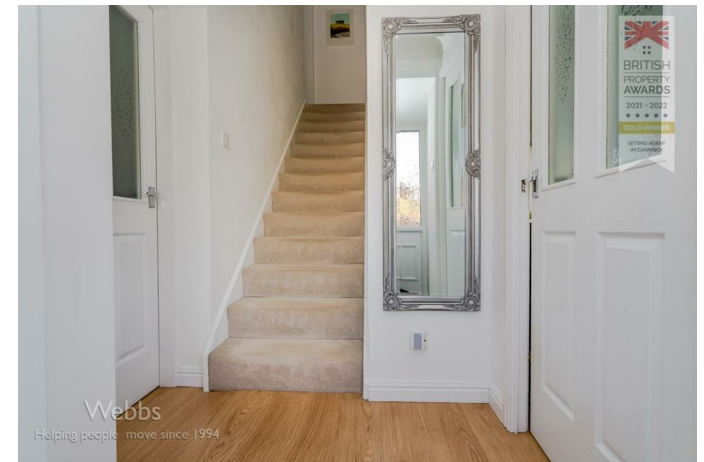
Bedroom Five

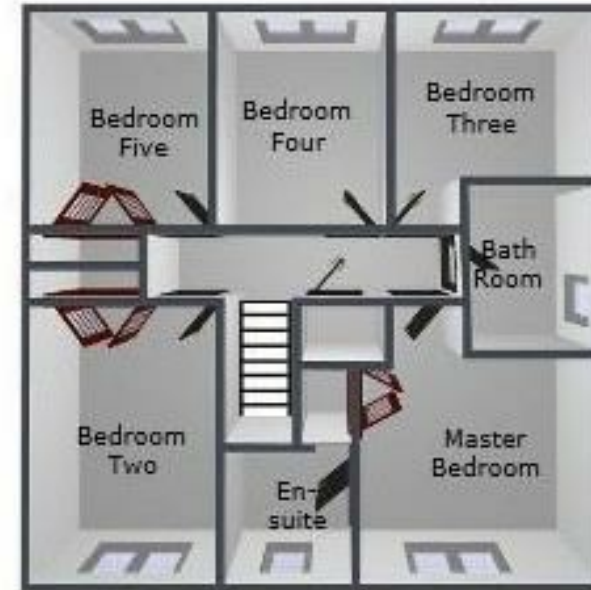
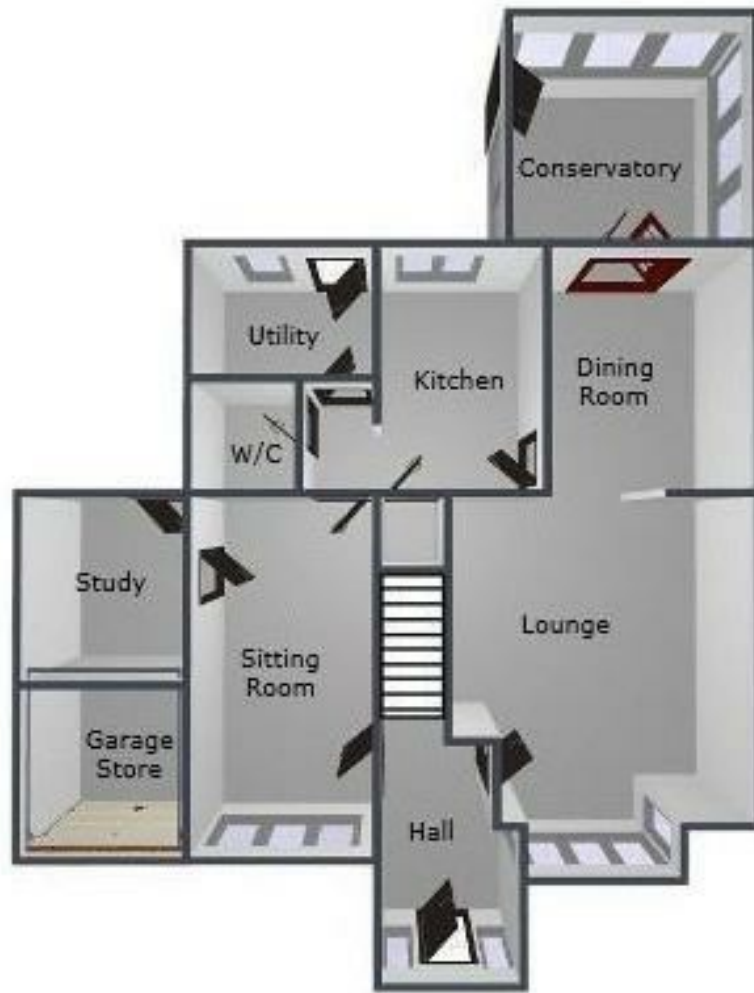
7'4" x 9'1" (2.26 x 2.77)

Bathroom

Please Note







Webbs Estate Agents - endeavour to maintain accurate depictions of properties in Virtual Tours, Floor Plans and descriptions, however, these are intended only as a guide and purchasers must satisfy themselves by personal inspection.

Energy Efficiency Rating		Environmental Impact (CO ₂) Rating	
Current	Potential	Current	Potential
Energy Efficiency: 81 Energy Efficiency: 82 Energy Efficiency: 83 Energy Efficiency: 84 Energy Efficiency: 85 Energy Efficiency: 86 Energy Efficiency: 87 Energy Efficiency: 88 Energy Efficiency: 89 Energy Efficiency: 90	Energy Efficiency: 91 Energy Efficiency: 92 Energy Efficiency: 93 Energy Efficiency: 94 Energy Efficiency: 95 Energy Efficiency: 96 Energy Efficiency: 97 Energy Efficiency: 98 Energy Efficiency: 99 Energy Efficiency: 100	Environmental Impact: 100 Environmental Impact: 95 Environmental Impact: 90 Environmental Impact: 85 Environmental Impact: 80 Environmental Impact: 75 Environmental Impact: 70 Environmental Impact: 65 Environmental Impact: 60 Environmental Impact: 55 Environmental Impact: 50	Environmental Impact: 45 Environmental Impact: 40 Environmental Impact: 35 Environmental Impact: 30 Environmental Impact: 25 Environmental Impact: 20 Environmental Impact: 15 Environmental Impact: 10 Environmental Impact: 5 Environmental Impact: 0
England & Wales EU Directive 2002/91/EC		England & Wales EU Directive 2002/91/EC	