



Webbs

Helping people move since 1994

Cleeton Street | Cannock | WS12 3HX

Offers Over £220,000



Summary

** NO CHAIN ** POPULAR LOCATION ** VIEWING ADVISED ** MODERN FAMILY HOME ** GREAT SCHOOL CATCHMENT ** MODERN KITCHEN ** GUEST WC ** LOUNGE DINER ** THREE BEDROOMS ** FAMILY BATHROOM ** PRIVATE DRIVEWAY ** LANDSCAPED GARDENS ** UPVC DOUBLE GLAZING ** GAS CENTRAL HEATING **

Webbs Estate Agents have pleasure in offering this well-presented family home, situated in a popular location, being close to all local amenities, shops and a great school catchment. Briefly comprises: through hallway, guest WC, modern kitchen with integrated appliances and spacious lounge diner. On the first floor, the landing leads to three bedrooms and a family bathroom. Externally there is a private driveway providing ample off-road parking for two vehicles and a private landscaped garden to the rear.

Key Features

- NO CHAIN
- VIEWING IS ESSENTIAL
- FAMILY BATHROOM
- MODERN KITCHEN
- DRIVEWAY & GARDENS
- POPULAR LOCATION
- THREE BEDROOMS
- SPACIOUS LOUNGE DINER
- GUEST WC

Rooms and Dimensions

AWAITING VENDOR APPROVAL

THROUGH HALLWAY

GUEST WC

MODERN KITCHEN

9'9" x 8'1" (2.99m x 2.48m)

SPACIOUS LOUNGE DINER

14'4" x 14'9" (4.38m x 4.52m)

LANDING

BEDROOM ONE

14'11" x 9'3" (4.55m x 2.84m)

BEDROOM TWO

11'9" x 8'0" (3.59m x 2.45m)

BEDROOM THREE

8'5" x 6'5" (2.59m x 1.98m)

FAMILY BATHROOM

PRIVATE DRIVEWAY

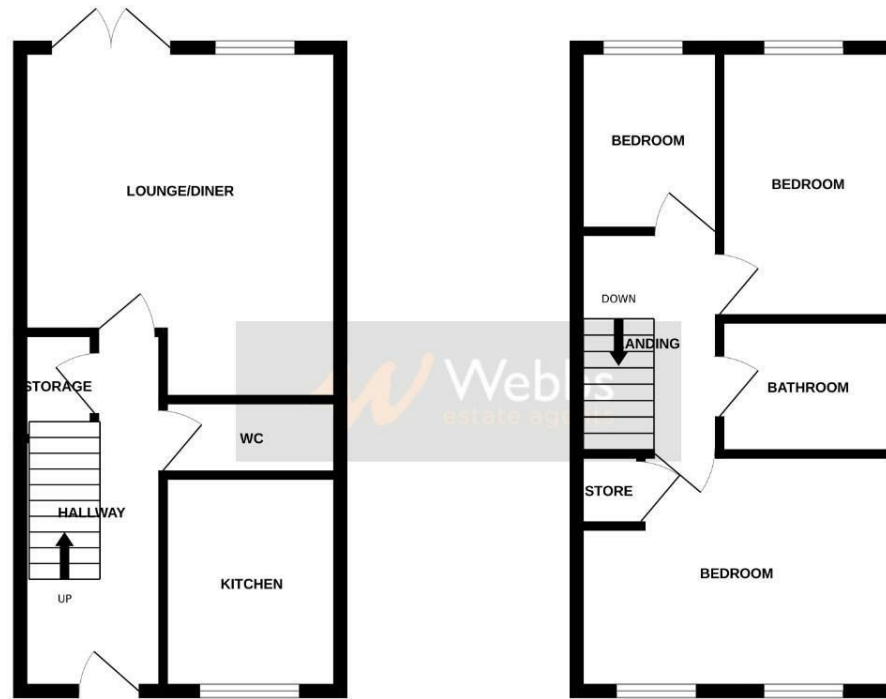
LANDSCAPED GARDEN





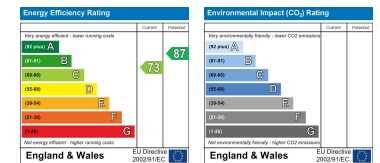
GROUND FLOOR

1ST FLOOR



Whilst every attempt has been made to ensure the accuracy of the floorplan contained here, measurements of doors, windows, rooms and any other items are approximate and no responsibility is taken for any error, omission or mis-statement. This plan is for illustrative purposes only and should be used as such by any prospective purchaser. The services, systems and appliances shown have not been tested and no guarantee as to their operability or efficiency can be given.
Made with Metroplan ©2024

Webbs Estate Agents - endeavour to maintain accurate depictions of properties in Virtual Tours, Floor Plans and descriptions, however, these are intended only as a guide and purchasers must satisfy themselves by personal inspection.



153 Avon Road, Cannock, WS11 1LF

Tel: 01543 468846 | Email: sales@webbestateagents.co.uk | www.webbestateagents.co.uk

