



Webbs

Helping people move since 1891

Burnthill Lane | Rugeley | WS15 2HY
Offers In The Region Of £247,500

 **Webbs**
estate agents

Summary

** EXTENDED HOME ** FOUR BEDROOMS ** GROUND FLOOR SHOWER AND UTILITY ROOM ** KITCHEN DINER ** SPACIOUS LOUNGE ** FOUR BEDROOMS ** LARGE ENCLOSED REAR GARDEN ** CLOSE TO TOWN CENTRE, AND TRAIN STATIONS ** EXCELLENT SCHOOL CATCHMENTS ** VIEWING ESSENTIAL **

Webbs Estate Agents are pleased to offer for sale an extended semi-detached home, close to Rugeley Town Centre, Train Stations and excellent school catchments. In brief consisting of an entrance hallway, a spacious lounge, modern kitchen diner with patio doors to the rear garden, and a ground floor shower room and utility. To the first floor there are four bedrooms and a modern family bathroom, the property does have a loft room with drop-down ladders and velux windows, a large enclosed rear garden is mainly laid to lawn, side access to the front driveway provides ample off-road parking. VIEWING VIA AGENT ON 01543 468846

Key Features

- EXTENDED SEMI DETACHED HOME
- SPACIOUS LOUNGE
- EXCELLENT SCHOOL CATCHMENTS
- GROUND FLOOR SHOWER ROOM AND UTILITY
- CLOSE TO TOWN CENTRE AND TRAIN STATION
- FOUR BEDROOMS
- LARGE ENCLOSED REAR GARDEN
- MODERN KITCHEN DINER
- AMPLE OFF ROAD PARKING
- VIEWING ESSENTIAL

Rooms and Dimensions

ENTRANCE HALLWAY

SPACIOUS LOUNGE

13'5" x 12'11" (4.09 x 3.94)

MODERN KITCHEN DINER

26'6" x 7'10" (8.08 x 2.39)

GROUND FLOOR SHOWER ROOM AND UTILITY

LANDING

BEDROOM ONE

14'0" x 10'0" (4.27 x 3.05)

BEDROOM TWO

11'3" x 10'4" (3.45 x 3.15)

BEDROOM THREE

7'6" x 6'5" (2.31 x 1.98)

BEDROOM FOUR

7'4" x 6'5" (2.24 x 1.98)

FAMILY BATHROOM

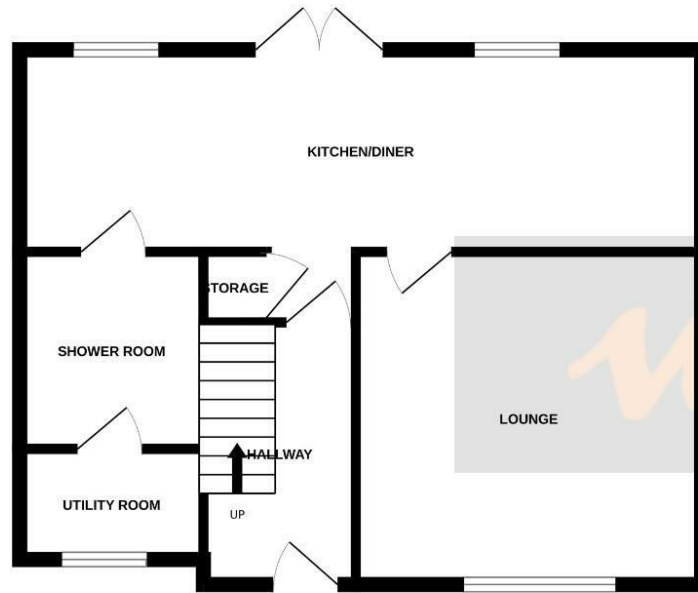
LARGE ENCLOSED REAR GARDEN

AMPLE OFF ROAD PARKING VIA FRONT DRIVEWAY

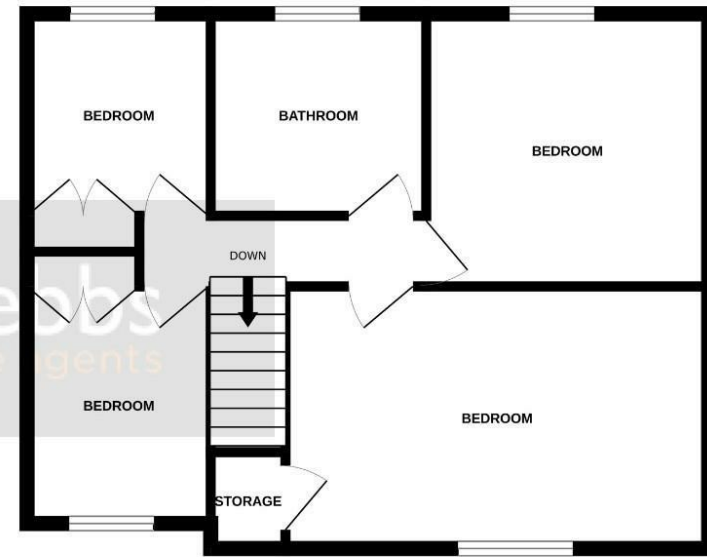




GROUND FLOOR



1ST FLOOR



Whilst every attempt has been made to ensure the accuracy of the floorplan contained here, measurements of doors, windows, rooms and any other items are approximate and no responsibility is taken for any error, omission or mis-statement. This plan is for illustrative purposes only and should be used as such by any prospective purchaser. The services, systems and appliances shown have not been tested and no guarantee as to their operability or efficiency can be given.
Made with Metropix ©2024

Webbs Estate Agents - endeavour to maintain accurate depictions of properties in Virtual Tours, Floor Plans and descriptions, however, these are intended only as a guide and purchasers must satisfy themselves by personal inspection.

