



Woodland Court | Cannock | WS12 1DA

Offers Around £125,000

 **Webbs**
estate agents

Summary

Webbs Estate Agents are thrilled to offer to let this immaculately presented apartment located within walking distance of Hednesford town centre.

The apartment is located on the third floor of this modern development which offers lift access. The apartment itself offers a large entrance hallway, open plan living and kitchen area with a Juliet balcony, two double bedrooms, an en suite to the main bedroom and a family bathroom. The property also benefits from plenty of storage space.

The apartment further benefits from UPVC double glazing and electric heating throughout. The property has allocated off-road parking for one vehicle within the development's securely gated parking area alongside visitor spaces.

Key Features

- LANDLORDS ONLY
- TWO DOUBLE BEDROOMS
- OPEN PLAN LIVING
- JULIET BALCONY
- COUNCIL TAX BAND B
- IMMACULATLY PRESENTED
- EN SUITE TO MAIN BEDROOM
- PLENTY OF STORAGE SPACE
- EPC RATING C
- SECURE GATED DEVELOPMENT

Rooms and Dimensions

COMMUNAL ENTRANCE

HALLWAY

OPEN PLAN KITCHEN/DINER

20'6" x 12'6" (6.268 x 3.829)

BEDROOM ONE

10'11" x 8'8" (3.352m x 2.662m)

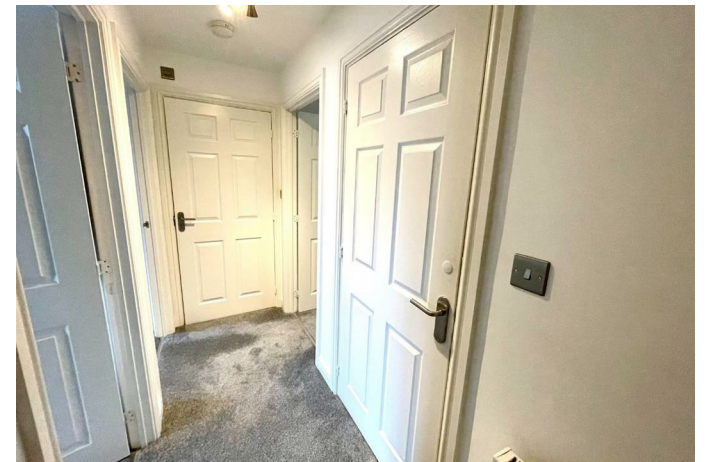
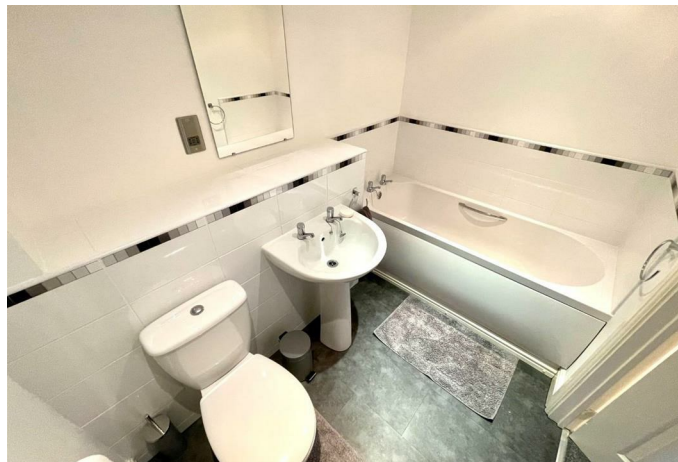
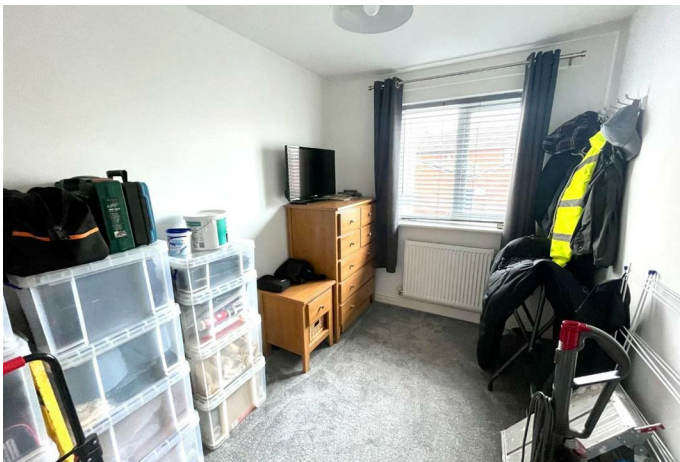
BEDROOM TWO

11'0" x 6'10" (3.357m x 2.105m)

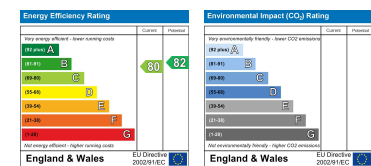
BATHROOM

8'7" x 5'1" (2.619m x 1.569m)





Webbs Estate Agents - endeavour to maintain accurate depictions of properties in Virtual Tours, Floor Plans and descriptions, however, these are intended only as a guide and purchasers must satisfy themselves by personal inspection.



153 Avon Road, Cannock, WS11 1LF

Tel: 01543 468846 | Email: sales@webbestateagents.co.uk | www.webbestateagents.co.uk

