



Webbs

Helping people move since 1994

**Darwin Close | Heath Hayes, Cannock | WS12 2SL**

**Offers Over £180,000**

 **Webbs**  
estate agents

## Summary

\*\* POPULAR LOCATION \*\* SEMI DETACHED HOME \*\* VIEWING IS ESSENTIAL \*\* THREE BEDROOMS \*\* FAMILY BATHROOM \*\* LOUNGE DINER \*\* CONSERVATORY \*\* KITCHEN \*\* GARAGE \*\* FRONT & REAR GARDENS \*\* REAR DRIVEWAY \*\* PRIME SCHOOL CATCHMENT \*\*

Webbs Estate Agents have pleasure in offering this well-presented semi-detached family home, situated in a popular location, being close to all local amenities, shops and good schools. Briefly comprises: an entrance hallway, lounge diner, conservatory and kitchen. To the first floor the landing leads to three bedrooms and a family bathroom. Externally there is a rear driveway, garage, front & rear gardens

## Key Features

- SEMI DETACHED HOME
- GREAT SCHOOL CATCHMENT
- LOUNGE DINER, CONSERVATORY
- REAR GARAGE, DRIVEWAY
- POPULAR LOCATION
- THREE BEDROOMS & FAMILY BATHROOM
- FRONT & REAR GARDENS

## Rooms and Dimensions

### AWAITING VENDOR APPROVAL

### ENTRANCE HALLWAY

### LOUNGE DINER

20'11" x 11'8" (6.39m x 3.58m)

### KITCHEN

7'10" x 9'3" (2.41m x 2.84m)

### CONSERVATORY

9'1" x 10'3" (2.78m x 3.14m)

### LANDING

### BEDROOM ONE

12'1" x 10'3" (3.69m x 3.13m)

### BEDROOM TWO

13'0" x 8'9" (3.98m x 2.69m )

### BEDROOM THREE

8'8" x 8'0" (2.66m x 2.44m)

### FRONT & REAR GARDENS

### REAR DRIVEWAY

### GARAGE

### COAL MINING

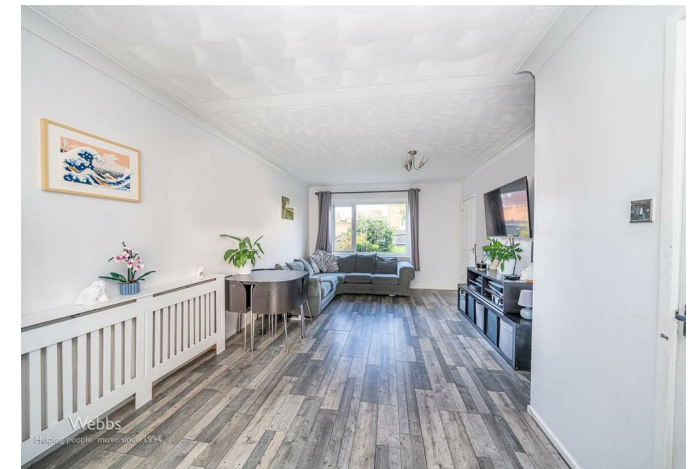
### CONNECTIVITY:

### PARKING

### PROPERTY TYPE & CONSTRUCTION

### ROOMS

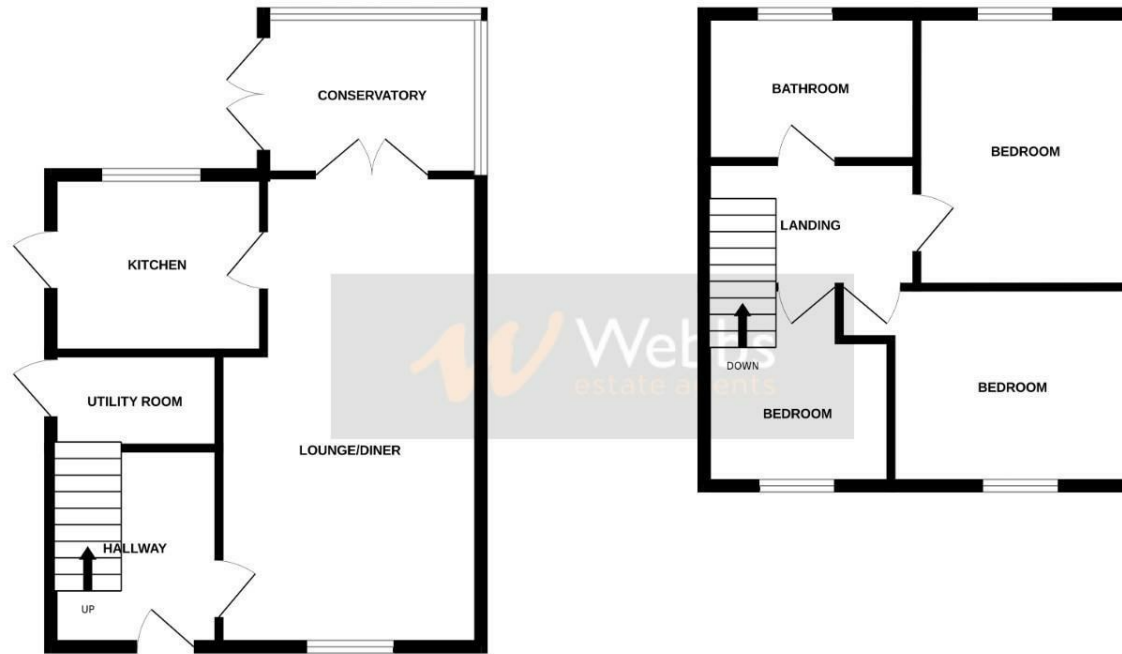
### UTILITIES





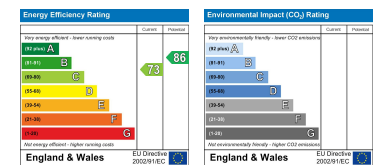
GROUND FLOOR

1ST FLOOR



Whilst every attempt has been made to ensure the accuracy of the floorplan contained here, measurements of doors, windows, rooms and any other items are approximate and no responsibility is taken for any error, omission or mis-statement. This plan is for illustrative purposes only and should be used as such by any prospective purchaser. The services, systems and appliances shown have not been tested and no guarantee as to their operability or efficiency can be given.  
Made with Metropix ©2023

Webbs Estate Agents - endeavour to maintain accurate depictions of properties in Virtual Tours, Floor Plans and descriptions, however, these are intended only as a guide and purchasers must satisfy themselves by personal inspection.



153 Avon Road, Cannock, WS11 1LF

Tel: 01543 468846 | Email: sales@webbestateagents.co.uk | www.webbestateagents.co.uk

