



Truro Place | Heath Hayes, Cannock | WS12 3YJ

Asking Price £359,950

 **Webbs**  
estate agents

## Summary

\*\* MOTIVATED SALE \*\* DETACHED FAMILY HOME \*\* EXCELLENT SCHOOL CATCHMENT \*\* FOUR BEDROOMS \*\* EN-SUITE TO MASTER \*\* THROUGH LOUNGE DINER \*\* CONSERVATORY \*\* WELL EQUIPPED BREAKFAST KITCHEN \*\* LARGE UTILITY ROOM \*\* LANDSCAPED REAR GARDEN \*\* LARGE DRIVEWAY \*\* SOUGHT AFTER LOCATION \*\* EARLY VIEWING ADVISED \*\*

WEBBS ESTATE AGENTS are pleased to offer for sale a spacious family home in a sought after location with excellent school catchment in brief having entrance, lounge with inglenook fireplace and opening leading into the dining room, large well equipped breakfast kitchen and utility room, conservatory overlooking the landscaped rear garden. To the first floor there are four bedrooms the master having en-suite and family bathroom, externally the property has landscaped garden with paved patio seating areas and side access to the large driveway, viewing is essential to appreciate the size of accommodation on offer.

## Key Features

- FABULOUS DETACHED FAMILY HOME
- INTERNAL VIEWING IS ESSENTIAL
- PRIME SCHOOL CATCHMENT
- DECEPTIVELY SPACIOUS
- WELL PRESENTED THROUGHOUT
- POPULAR LOCATION
- SECLUDED POSITION
- MOTIVATED SELLER

## Rooms and Dimensions

### AWAITING VENDOR APPROVAL

### ENTRANCE HALLWAY

### LOUNGE

14'4" x 10'5" (4.39m x 3.20m)

### DINING ROOM

14'4" x 10'5" (4.39m x 3.20m)

### CONSERVATORY

10'5" x 8'2" (3.20m x 2.49m)

### KITCHEN DINER

17'8" x 8'9" (5.41m x 2.69m)

### UTILITY ROOM

9'1" x 5'10" (2.79m x 1.80m)

### LANDING

### MASTER BEDROOM

12'2" x 11'10" (3.71m x 3.61m)

### ENSUITE SHOWER ROOM

### BEDROOM TWO

11'6" x 8'2" (3.51m x 2.49m)

### BEDROOM THREE

10'2" x 8'9" (3.10m x 2.69m)

### BEDROOM FOUR

11'6" x 5'2" (3.51m x 1.60m)

### FAMILY BATHROOM

### GARAGE

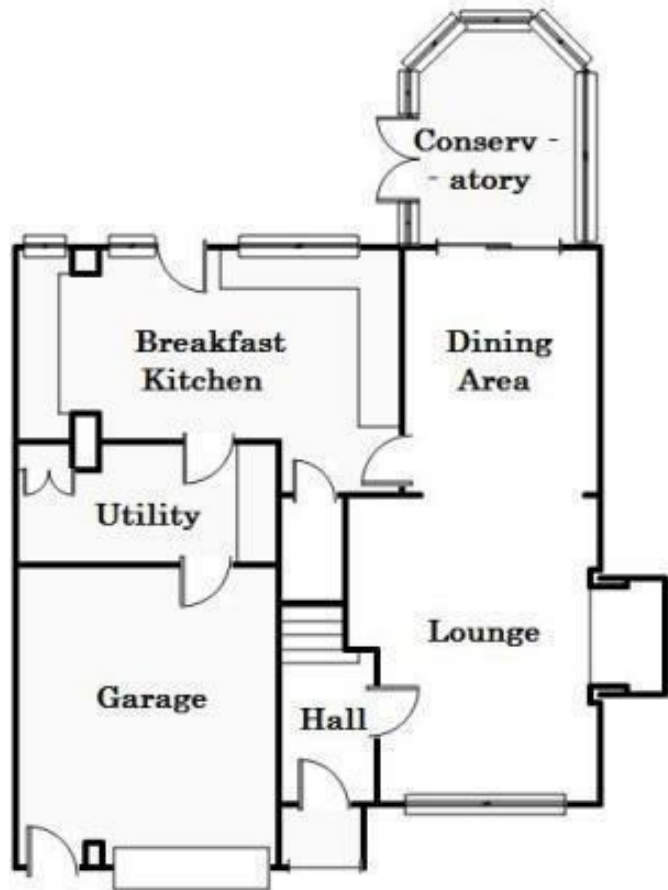
14'9" x 11'10" (4.50m x 3.61m)

### LANDSCAPED GARDENS

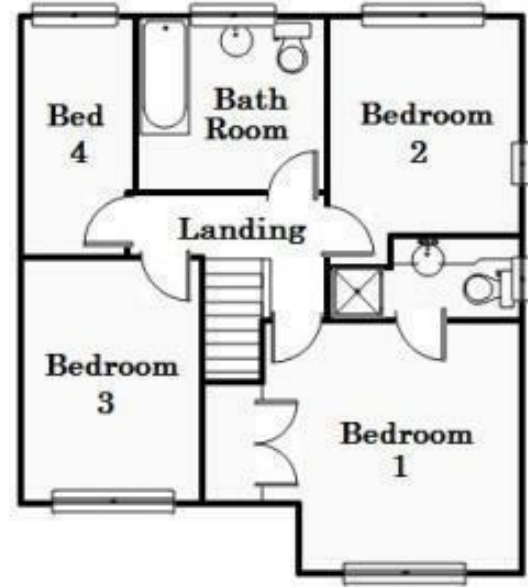
### PRIVATE DRIVEWAY







Ground Floor



First Floor

Webbs Estate Agents - endeavour to maintain accurate depictions of properties in Virtual Tours, Floor Plans and descriptions, however, these are intended only as a guide and purchasers must satisfy themselves by personal inspection.

