



Hednesford Road | Cannock | WS11 6LB

£150,000

 **Webbs**
estate agents

Summary

** BUILDING PLOTS ** THREE UNITS ** THREE BEDROOM DETACHED BUNGALOW ** 2 X TWO BEDROOM APARTMENTS ** REAR ACCESS ** DRIVEWAYS ** FULL PLANNING ** FULL DRAWINGS AVAILABLE **

Webbs Estate have pleasure in offering this rare opportunity to purchase a parcel of land with planning consent for three units to include a three bedroom detached bungalow and a detached unit with two two bedroom apartments. Set in a fabulous location with driveways, rear access, being close to all local amenities and within walking distance to Cannock Town Centre and Train Station. Further details in Branch

Key Features

Rooms and Dimensions

AWAITING VENDOR APPROVAL

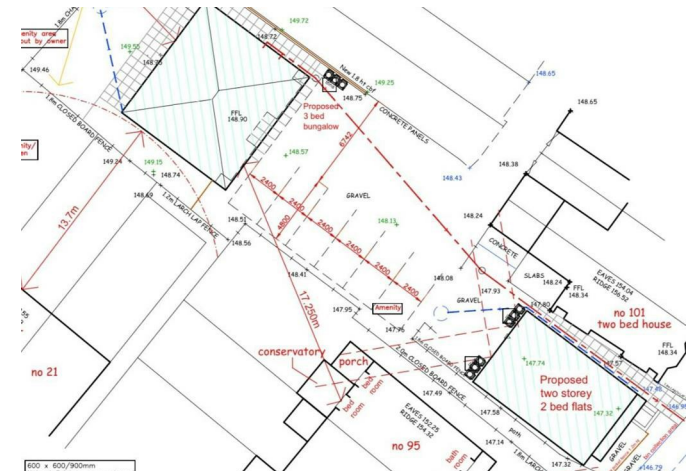
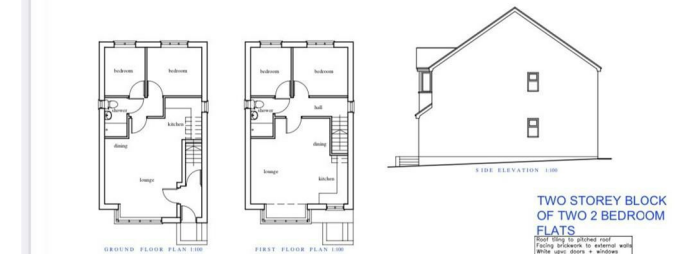
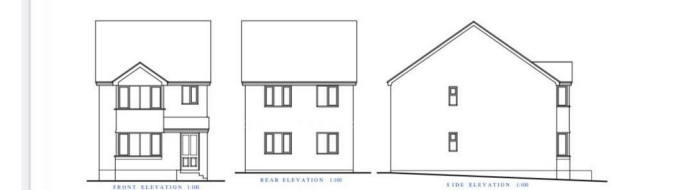
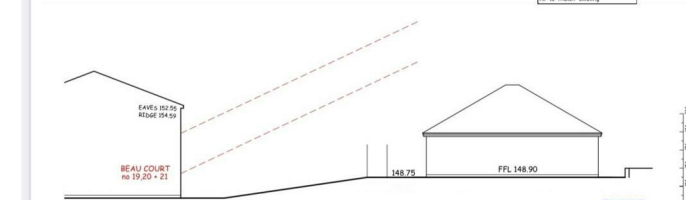
FULL PLANNING

DETACHED TWO BEDROOM BUNGALOW

TWO BEDROOM APARTMENT

TWO BEDROOM APARTMENT

Identification checks - C





Webbs Estate Agents - endeavour to maintain accurate depictions of properties in Virtual Tours, Floor Plans and descriptions, however, these are intended only as a guide and purchasers must satisfy themselves by personal inspection.

