



Webbs

Helping people move since 1994

**Bevan Lee Road | Cannock | WS11 4QB**

**Offers Over £170,000**

 **Webbs**  
estate agents

## Summary

\*\* CHAIN FREE \*\* SPACIOUS HOME \*\* LOUNGE DINER \*\* GUEST WC \*\* WELL EQUIPPED MODERN KITCHEN \*\* STORAGE ROOM IDEAL FOR UTILITY \*\* TWO GENEROUS DOUBLE BEDROOMS \*\* MODERN THREE PIECE BATHROOM \*\* LARGE REAR GARDEN \*\* IDEAL FIRST TIME BUYER HOME \*\* VIEWING ESSENTIAL \*\*

WEBBS ESTATE AGENTS are pleased to offer a spacious home with a modern finish, excellent transport links, schools and being close to local shops and amenities.

In brief entrance hallway with storage cupboard, spacious lounge diner, modern well equipped kitchen with a door to the side entrance and storage room which would make an ideal utility room. To the first floor there are two generous-sized double bedrooms with built-in wardrobes/storage space, three piece family bathroom with vanity unit and P-shaped bath with shower over, externally having large rear garden with patio and lawn and to the front of the property a further garden could provide off road parking, viewing advised to fully appreciate the property on offer. CHAIN FREE

## Key Features

- Two Double Bedrooms
- Excellent Transport Links
- Enclosed Rear Garden
- Storage Room/Utility Area
- Close To Town Centre
- Large Lounge Diner
- Modern Bathroom
- Modern Well Equipped Kitchen
- Excellent School Catchments
- Offered Chain Free and Viewing Advised

## Rooms and Dimensions

### Entrance Hallway

### Spacious Lounge Diner

18'9" xz 11'5" (5.740 xz 3.488 )

### Modern Kitchen

11'1" x 7'0" (3.391 x 2.156 )

### Guest WC

### Side Entrance

### Large Storage Cupboard/Utility Area

8'2" x 2'11" (2.501 x 0.9 )

### Landing

### Bedroom One

15'4" x 9'7" (4.676 x 2.942 )

### Bedroom Two

11'5" x 11'1" (3.487 x 3.385 )

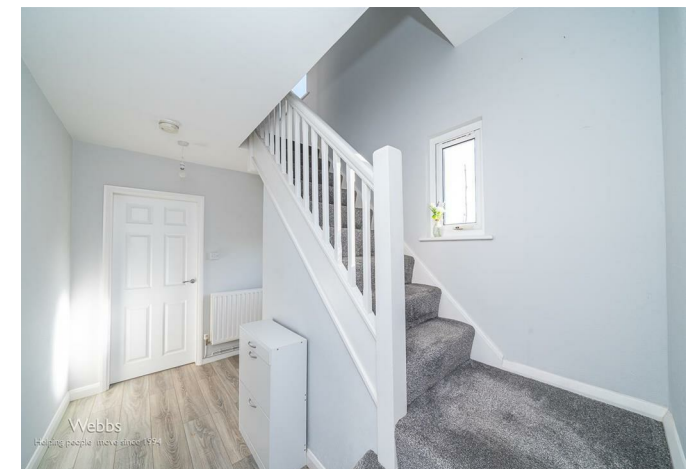
### Family Bathroom

7'3" x 5'4" (2.217 x 1.637 )

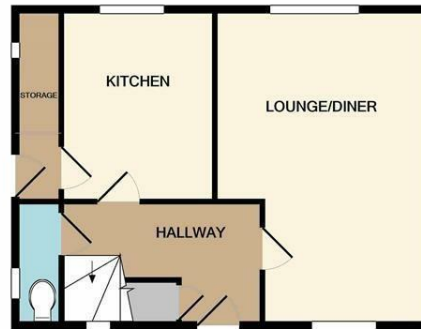
### Enclosed Rear Garden

### Front Garden

For a Viewing Please Call 01543 468846







GROUND FLOOR



1ST FLOOR

Whilst every attempt has been made to ensure the accuracy of the floor plan contained here, measurements of doors, windows, rooms and any other items are approximate and no responsibility is taken for any error, omission, or mis-statement. This plan is for illustrative purposes only and should be used as such by any prospective purchaser. The services, systems and appliances shown have not been tested and no guarantee as to their operability or efficiency can be given  
 Made with Metropix ©2020

Webbs Estate Agents - endeavour to maintain accurate depictions of properties in Virtual Tours, Floor Plans and descriptions, however, these are intended only as a guide and purchasers must satisfy themselves by personal inspection.

