



NEWSHOLME DRIVE, N21 1SQ

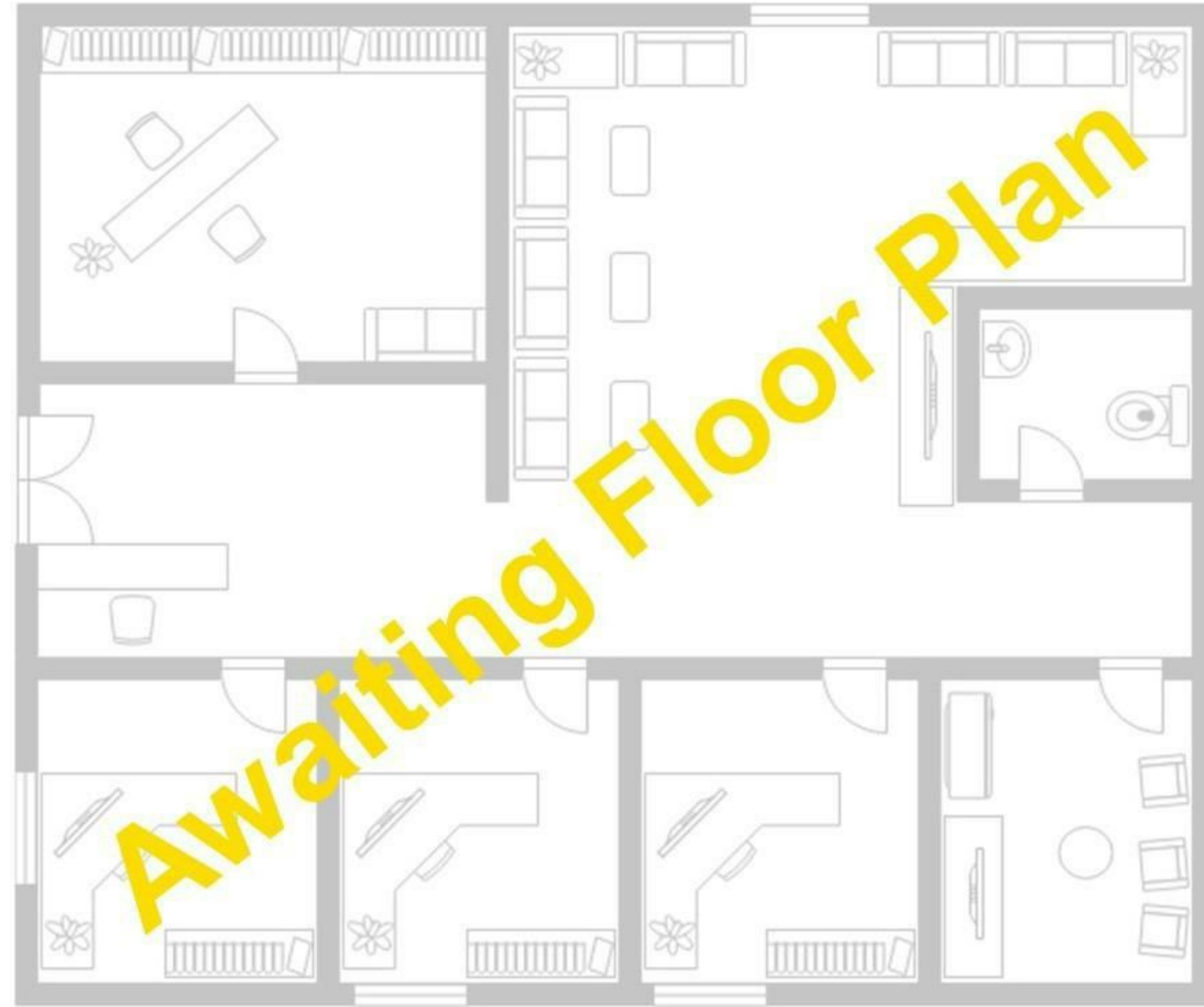


£425,000 Leasehold

- GROUND FLOOR
- KITCHEN
- BATHROOM
- RESTAURANT FACILITIES
- DUAL ASPECT LOUNGE
- TWO BEDROOMS
- COMMUNAL GROUNDS

Property Details

Spacious ground floor RETIREMENT flat in a convenient location. dual aspect lounge, fully fitted kitchen, two double bedrooms, Bathroom with shower and bath, Visitor guest suite, lift access and a warden pull cord in each room. Staff on duty 24/7, on site restaurant, parking and communal gardens.



Energy Efficiency Rating		Current	Potential
Very energy efficient - lower running costs			
(92 plus) A			
(81-91) B		74	76
(69-80) C			
(55-68) D			
(39-54) E			
(21-38) F			
(1-20) G			
Not energy efficient - higher running costs			
England & Wales		EU Directive 2002/91/EC	

