

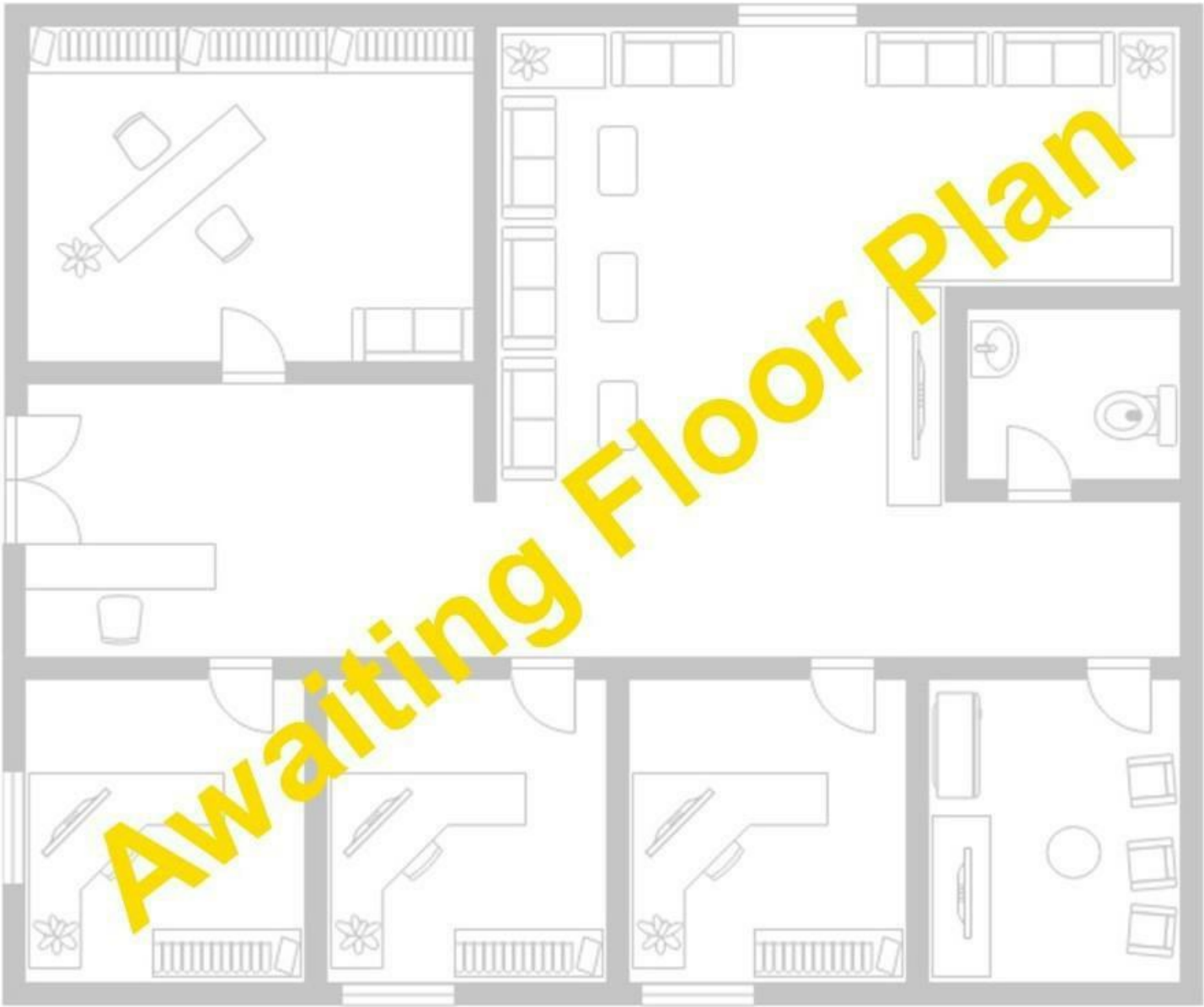
## NEWSHOLME DRIVE, N21 1SQ



**£425,000 Leasehold**

- GROUND FLOOR
- KITCHEN
- BATHROOM
- RESTAURANT FACILITIES
- DUAL ASPECT LOUNGE
- TWO BEDROOMS
- COMMUNAL GROUNDS

Property Details



Energy Efficiency Rating		
	Current	Potential
Very energy efficient - lower running costs		
(92 plus) <b>A</b>		
(81-91) <b>B</b>		
(69-80) <b>C</b>	<b>74</b>	<b>76</b>