



WESTVIEW CRESCENT, N9 9JP



Asking price £700,000 Freehold

- EXTENDED HOUSE IN CUL DE SAC
- FAMILY BATHROOM
- TWO FORMAL RECEPTION ROOMS WITH FIREPLACES
- DOWNSTAIRSWC
- OWN DRIVEWAY
- FOUR BEDROOMS
- EN-SUITE SHOWER ROOM
- EXTENDED KITCHEN/DINER
- GARAGE
- PRIVATE REAR GARDEN

Property Details

Mortemore Mackay are pleased to offer for sale this extended house situated on the borders of Bush Hill Park and close to Raglan primary school. The accommodation is arranged over three floors and provides 1591 square feet of living space. There are four bedrooms, a family bathroom, an ensuite shower room, two formal reception rooms both with fireplaces, an extended kitchen/diner and a downstairs wc. There is also a garage with its own driveway and a private rear garden.

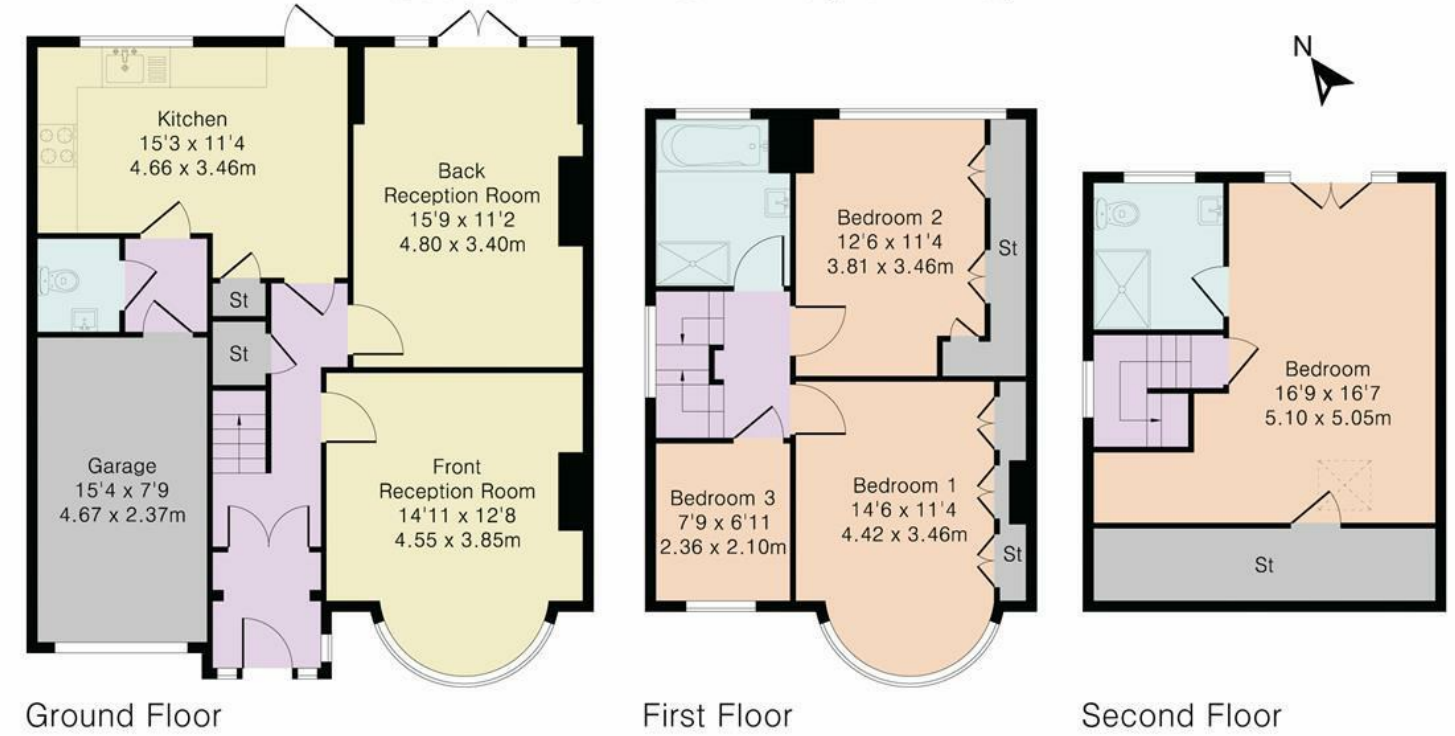


Approximate Gross Internal Area 1591 sq ft – 147 sq m

Ground Floor Area 790 sq ft – 73 sq m

First Floor Area 455 sq ft – 42 sq m

Second Floor Area 346 sq ft – 32 sq m



Although Pink Plan Ltd ensures the highest level of accuracy, measurements of doors, windows and rooms are approximate and no responsibility is taken for error, omission or misstatement. These plans are for representation purposes only as defined by RICS code of measuring practise. No guarantee is given on total square footage of the property within this plan. The figure icon is for initial guidance only and should not be relied on as a basis of valuation.



Energy Efficiency Rating

	Current	Potential
Very energy efficient - lower running costs		
(92 plus) A		
(81-91) B		83
(69-80) C		
(55-68) D	66	
(39-54) E		
(21-38) F		
(1-20) G		
Not energy efficient - higher running costs		
England & Wales	EU Directive 2002/91/EC	

