



CONWAY ROAD, N14 7BE



£995,000 Freehold

- END OF TERRACE
- KITCHEN
- FIRST FLOOR KITCHEN
- SEPARATE WC
- GARAGE
- THREE RECEPTIONS
- FIVE BEDROOMS
- BATHROOM
- GARDEN
- OFF STREET PARKING

Property Details

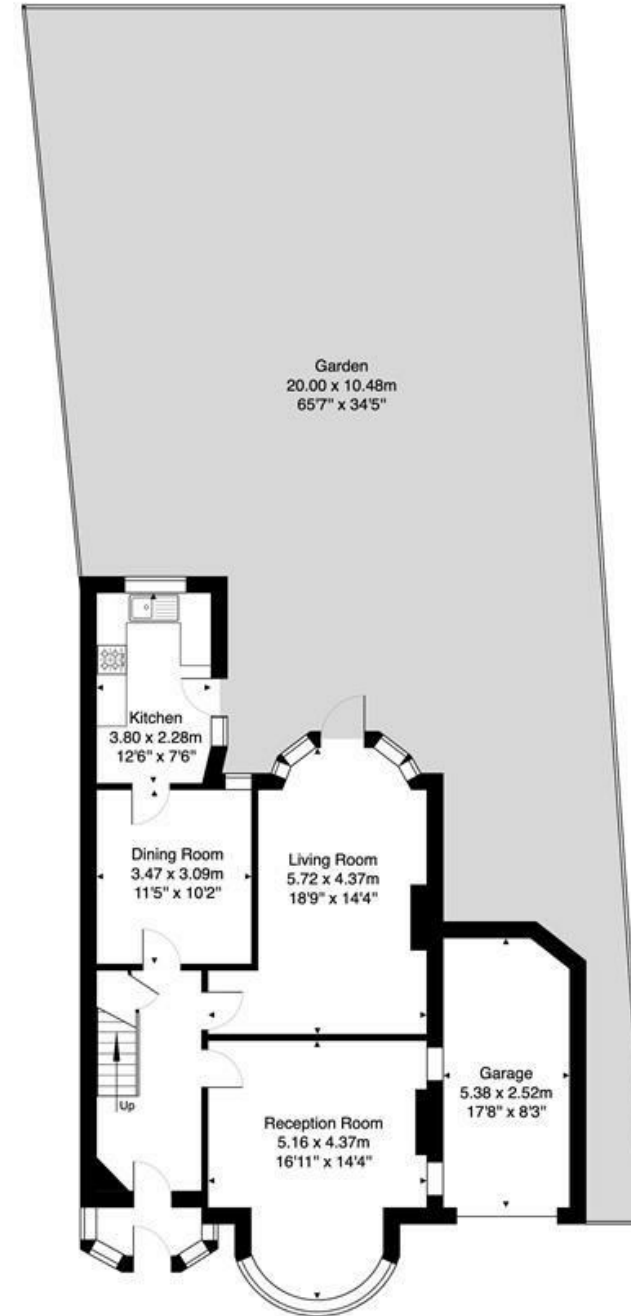
We have pleasure in offering for sale this end of terrace period property with approximately 2100 sq ft of accommodation. The accommodation consists of hallway, three receptions and kitchen. On the first floor there are four bedrooms with a kitchen off the fourth bedrooms, family bathroom and separate wc. On the second floor is a fifth bedroom with Juliet balcony with fabulous wide ranging views and an en-suite bathroom. The front garden has off street parking and access to the garage. The rear garden has a patio area with flower and shrub borders.

Situated on the sought after Lakes Estate within easy reach of Palmers Green mainline station and in walking distance of Broomfield Park.

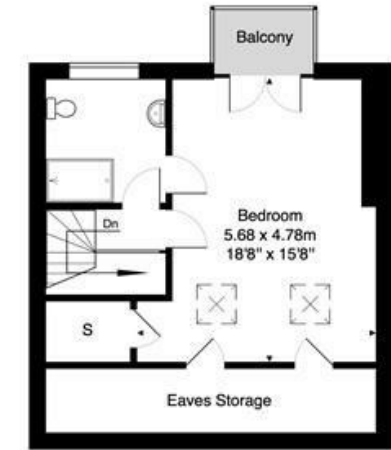


Conway Road- N14

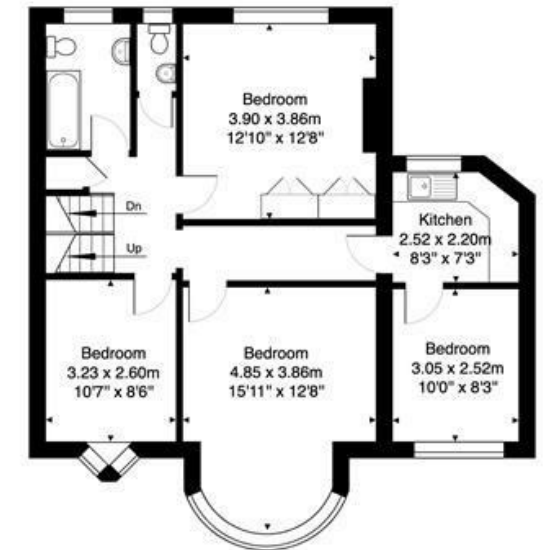
Approximate Gross Internal Area 197.2 m² ... 2123 ft² (excluding garden, balcony, eaves storage)



GROUND FLOOR



SECOND FLOOR



FIRST FLOOR

This Plan is for illustration purpose only and used as general indication of the proposed layout of the property. Dimensions are maximum and approximate and may vary.



Energy Efficiency Rating		Current	Potential
Very energy efficient - lower running costs			
(92 plus)	A		
(81-91)	B		76
(69-80)	C		
(55-68)	D	60	
(39-54)	E		
(21-38)	F		
(1-20)	G		
Not energy efficient - higher running costs			
England & Wales		EU Directive 2002/91/EC	

