



THE GREEN, N21 1LD



£2,400

- ON THE GREEN
- THREE BEDROOMS
- BRIGHT RECEPTION ROOM
- BALCONY
- TOP FLOOR APARTMENT
- TWO BATHROOMS
- MODERN FITTED KITCHEN
- COMMUNAL GARDENS

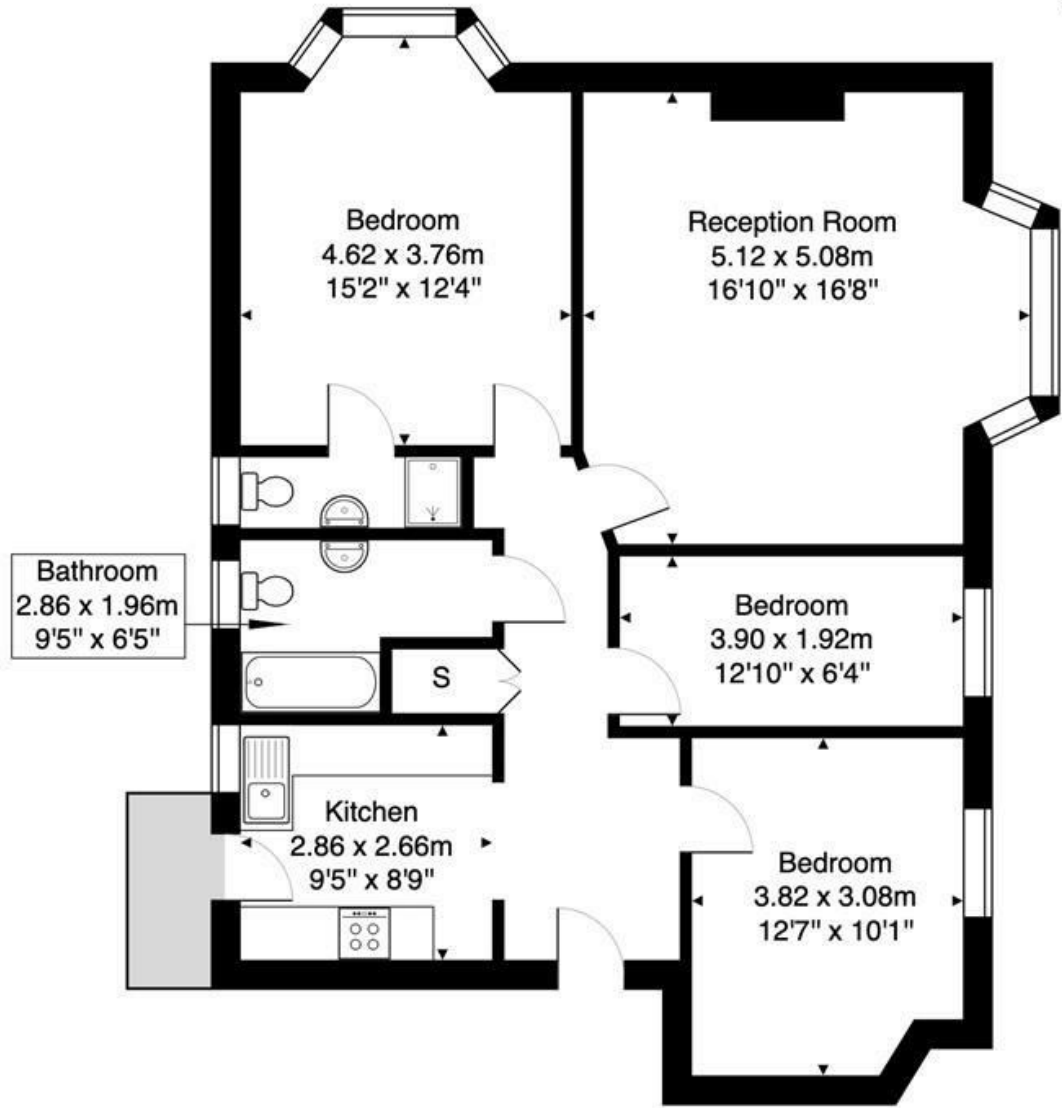
Property Details

Mortemore Mackay have pleasure in offering this spacious top floor flat in a sought after mansion block on Winchmore Hill Green. The accommodation extends to 947 square feet and provides a bright lounge, modern fitted kitchen, three bedrooms, two bathrooms, one an en-suite and a balcony. There are communal gardens.



Uplands Court- N21

Approximate Gross Internal Area 88.0 m² ... 947 ft²



SECOND FLOOR



This Plan is for illustration purpose only and used as general indication of the proposed layout of the property. Dimensions are maximum and approximate and may vary.

Energy Efficiency Rating		
	Current	Potential
Very energy efficient - lower running costs		
(92 plus) A		
(81-91) B		
(69-80) C		
(55-68) D		
(39-54) E		
(21-38) F		
(1-20) G		
Not energy efficient - higher running costs		
	70	80
England & Wales	EU Directive 2002/91/EC 