



GREENACRE WALK, N14 7DB



£615,000 Freehold

- TOP FLOOR PURPOSE BUILT FLAT
- SPACIOUS RECEPTION ROOM
- EN-SUITE BATHROOM
- PRIVATE BALCONY
- GARAGE EN-BLOC
- THREE BEDROOMS
- FITTED KITCHEN
- FURTHER BATHROOM NOW USED AS UTILITY AND WC
- LIFT
- OFF STREET RESIDENTS PARKING

Property Details

Nestled in the tranquil Greenacre Walk, this splendid top-floor purpose-built apartment offers a delightful blend of comfort and convenience. With over 1000 square feet of living space, this residence is perfect for those seeking a peaceful retreat in the heart of Southgate.

Upon entering, you are greeted by a spacious reception room that boasts ample natural light and provides access to a private balcony, where you can enjoy serene views over the well-maintained communal gardens. The fitted kitchen is both functional and inviting, making it a joy to prepare meals.

This apartment features three well-proportioned bedrooms, including a master suite with an en-suite bathroom, ensuring privacy and comfort. An additional WC and a utility room, which was formerly a bathroom, add to the practicality of the layout.

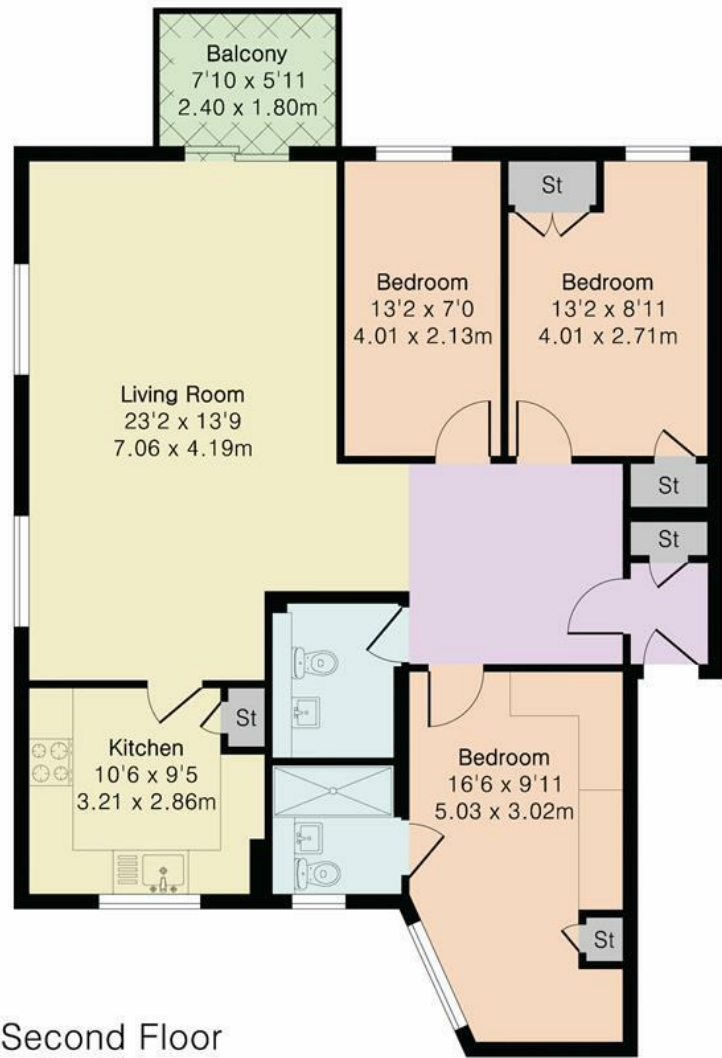
Accessibility is a key feature of this property, with entry via an entryphone system and the option of a lift or stairs. For those with vehicles, a garage en-bloc and off street residents' parking are available, providing added convenience.

The location is superb, tucked away in a small turning off Canon Hill, yet close to Southgate Underground and Palmers Green Station, making commuting a breeze. Additionally, the nearby Broomfield and Grovelands Parks offer lovely green spaces for leisurely strolls or outdoor activities.

This apartment is a rare find, combining spacious living, modern amenities, and a prime location. It is an ideal choice for anyone looking to enjoy the best of London living.



Approximate Gross Internal Area 1004 sq ft - 93 sq m



Although Pink Plan Ltd ensures the highest level of accuracy, measurements of doors, windows and rooms are approximate and no responsibility is taken for error, omission or misstatement. These plans are for representation purposes only as defined by RICS code of measuring practise. No guarantee is given on total square footage of the property within this plan. The figure icon is for initial guidance only and should not be relied on as a basis of valuation.

