



THE RIDGEWAY, EN2 8AL



£895,000 Freehold

- CUL DE SAC
- FOUR BEDROOMS
- EN-SUITE BATHROOM
- FURTHER RECEPTION ROOM
- LARGE DRIVEWAY FOR OFF STREET PARKING
- EXTENDED & REFURBISHED SEMI DETACHED HOUSE
- FAMILY BATHROOM
- OPEN PLAN KITCHEN/DINING/RECEPTION ROOM
- DOWNSTAIRS WC
- GARDEN ROOM FORMERLY A GARAGE

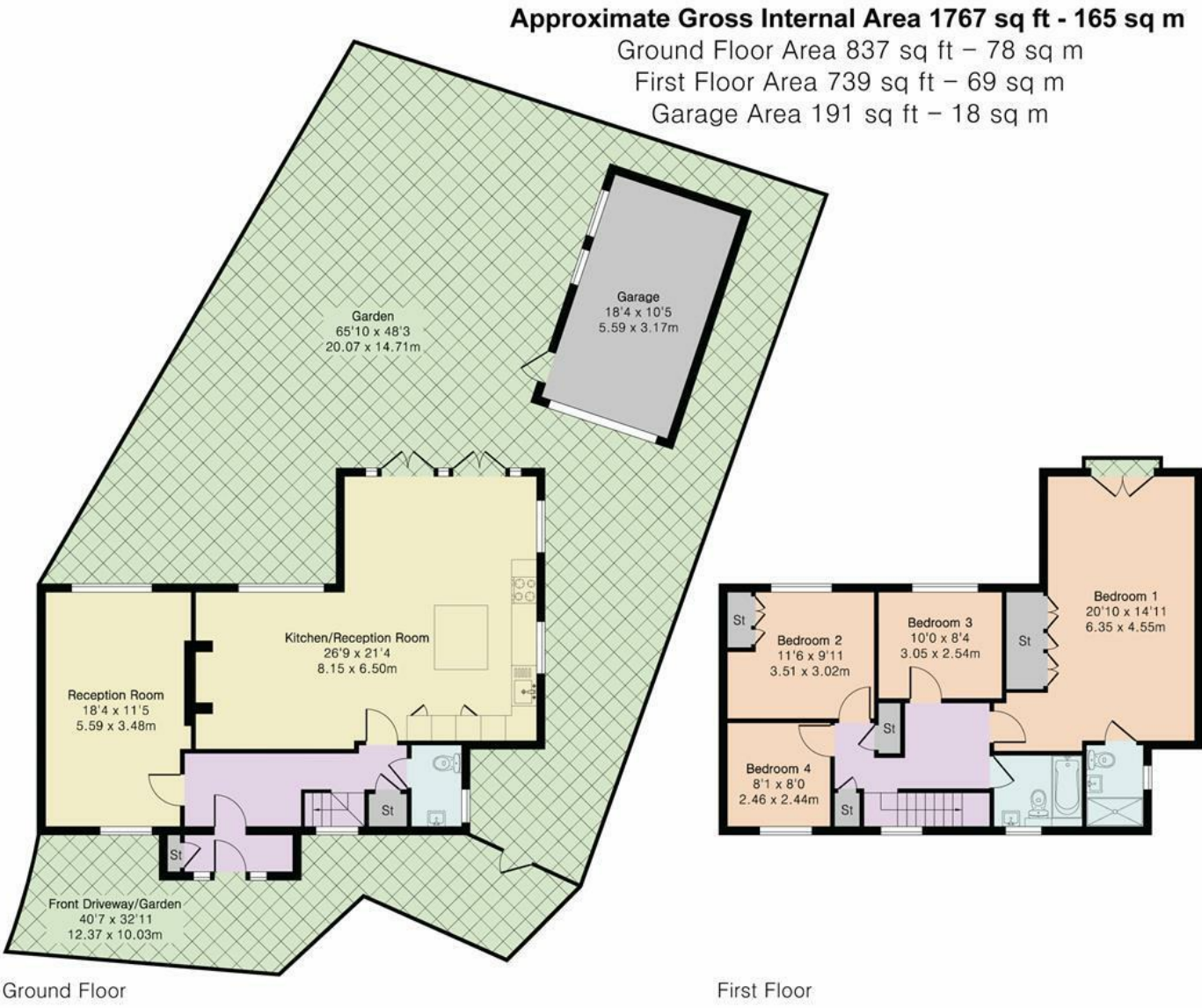
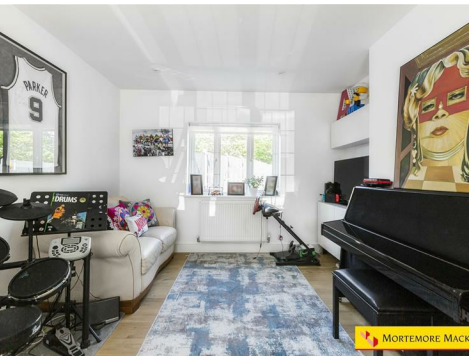
Property Details

Nestled in a tranquil cul-de-sac on The Ridgeway in Enfield, this charming semi-detached house offers a perfect blend of comfort and modern living. With four spacious bedrooms, including a delightful en-suite bathroom, this property is ideal for families seeking both space and convenience.

The heart of the home is the open plan kitchen, dining, and reception room, which creates a warm and inviting atmosphere for entertaining guests or enjoying family meals. The additional reception room provides further versatility, allowing for a cosy lounge or a play area for children. A convenient downstairs WC adds to the practicality of the layout.

The property has been thoughtfully extended, ensuring ample room for everyone. Outside, you will find a large driveway that offers off-street parking, a valuable feature in this sought-after area. The garden room, formerly a garage, presents an excellent opportunity for a gym, or additional storage space, catering to your lifestyle needs.

Situated close to the M25, Enfield town, and Gordon Hill train station, this home boasts excellent transport links and local amenities, making it a perfect choice for commuters and families alike. This property is not just a house; it is a place where memories can be made. Don't miss the chance to make it your own.



Although Pink Plan Ltd ensures the highest level of accuracy, measurements of doors, windows and rooms are approximate and no responsibility is taken for error, omission or misstatement. These plans are for representation purposes only as defined by RICS code of measuring practise. No guarantee is given on total square footage of the property within this plan. The figure icon is for initial guidance only and should not be relied on as a basis of valuation.

