

NEWSHOLME DRIVE, N21 1SQ



£400,000 Leasehold

- RETIREMENT FLAT
- TWO BEDROOMS
- NEWLY FITTED KITCHEN
- LIFT
- FIRST FLOOR
- RECEPTION ROOM
- NEWLY INSTALLED WET ROOM
- COMMUNAL GARDENS

Property Details

Nestled in the serene surroundings of Newsholme Drive, London, this delightful first-floor retirement flat is designed for those aged 65 and over, offering a perfect blend of comfort and convenience. The property features two well-proportioned bedrooms, one of which boasts a spacious walk-in wardrobe, providing ample storage for your belongings.

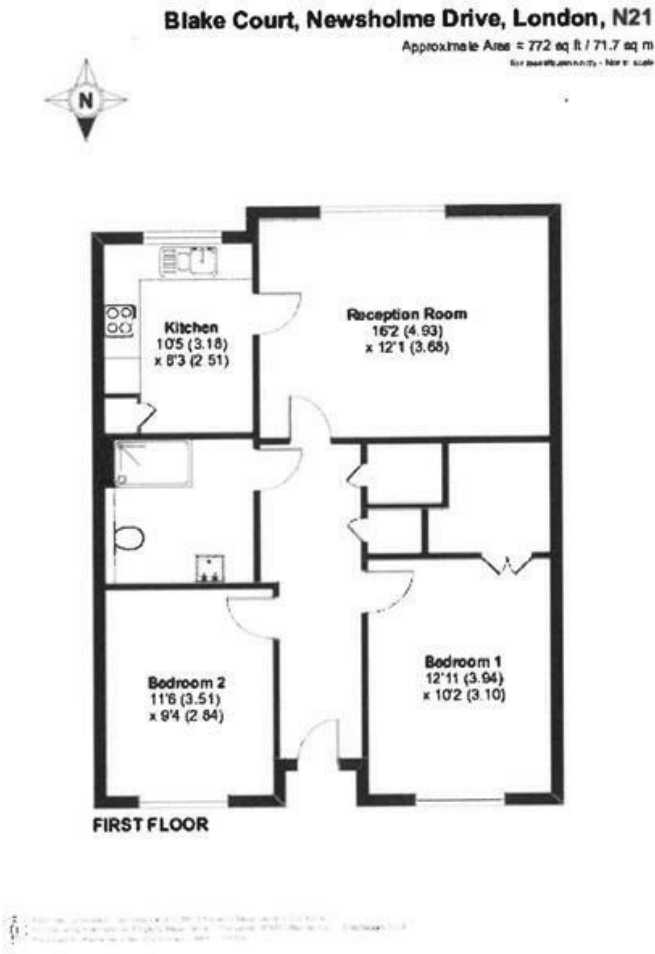
The inviting reception room serves as a lovely space for relaxation or entertaining guests, while the newly fitted kitchen is both modern and functional, catering to all your culinary needs. The flat also includes a newly installed wet room, recently modernised to ensure a fresh and stylish atmosphere.

Blake Court is a welcoming community that offers 24-hour services, ensuring peace of mind for residents. Its prime location is particularly advantageous, being in close proximity to Sainsbury's in Highlands Village, as well as a local doctor's surgery and pharmacy, making daily errands and healthcare easily accessible.

This retirement flat is not just a home; it is a lifestyle choice that promotes independence while providing the support and services needed for a fulfilling life. With its thoughtful design and excellent amenities, this property is an ideal opportunity for those seeking a comfortable and secure living environment in London.



Floorplan for 2 bedroom retirement property for sale



Energy Efficiency Rating		
	Current	Potential
Very energy efficient - lower running costs		
(92 plus) A		
(81-91) B	80	80
(69-80) C		
(55-68) D		
(39-54) E		
(21-38) F		
(1-20) G		
Not energy efficient - higher running costs		
England & Wales		EU Directive 2002/91/EC

