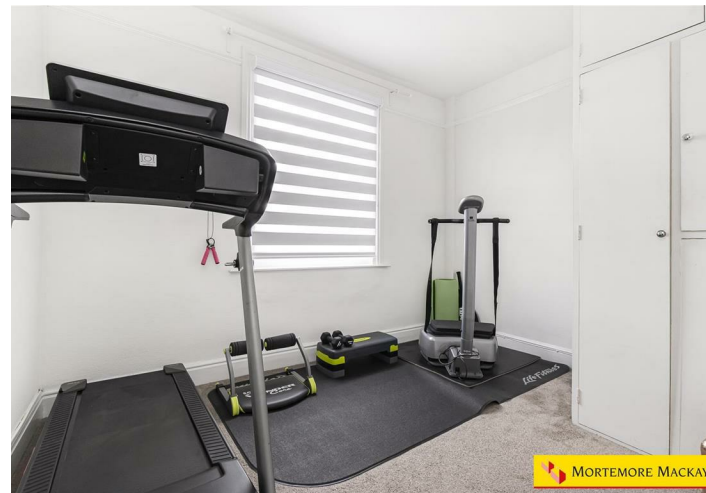




## QUEEN ANNES GROVE, EN1 2JP



**£925,000 Freehold**

- PERIOD SEMI DETACHED HOUSE
- FAMILY BATHROOM
- KITCHEN DINER
- PRIVATE REAR GARDEN 77'7 IN LENGTH
- PERIOD FEATURES
- FOUR BEDROOMS
- THREE RECEPTION AREAS
- DOWNSTAIRS WC
- OFF STREET PARKING



Property Details

Nestled in the charming Queen Annes Grove, Enfield, this attractive four-bedroom semi-detached house offers a delightful blend of period features and modern living. With three spacious reception rooms, this property provides ample space for both relaxation and entertaining, making it an ideal family home.

There is a kitchen diner, perfect for family meals and gatherings. Additionally, the convenience of a downstairs WC adds to the practicality of the layout. Each of the four bedrooms is well-proportioned, providing comfortable living spaces for all family members and a family bathroom. There is also a large driveway providing off street parking and a private rear garden extending to 77'7".

Location is key, and this property is ideally situated close to Bush Hill Park Station, ensuring easy access to central London and beyond. Families will appreciate the proximity to Raglan Primary School, making the morning school run a breeze.

This semi-detached house not only boasts generous living space but also retains charming period features that add character and warmth. Whether you are looking for a family home or a property with potential for future growth, this residence in Bush Hill Park is a wonderful opportunity not to be missed.



Approximate Gross Internal Area 1604 sq ft - 149 sq m  
Ground Floor Area 915 sq ft – 85 sq m  
First Floor Area 689 sq ft – 64 sq m



Although Pink Plan Ltd ensures the highest level of accuracy, measurements of doors, windows and rooms are approximate and no responsibility is taken for error, omission or misstatement. These plans are for representation purposes only as defined by RICS code of measuring practise. No guarantee is given on total square footage of the property within this plan. The figure icon is for initial guidance only and should not be relied on as a basis of valuation.

