



THE ALDERS, N21 1AR



£1,200,000 Freehold

- SEMI DETACHED OVERLOOKING GREEN
- LOUNGE/DINING ROOM
- KITCHEN
- UTILITY ROOM
- DOWNSTAIRS CLOAKROOM
- 4 BEDROOMS
- FAMILY BATHROOM
- SHOWER ROOM
- SOUTHERLY FACING GARDEN
- GARAGE AND OFF STREET PARKING

Property Details

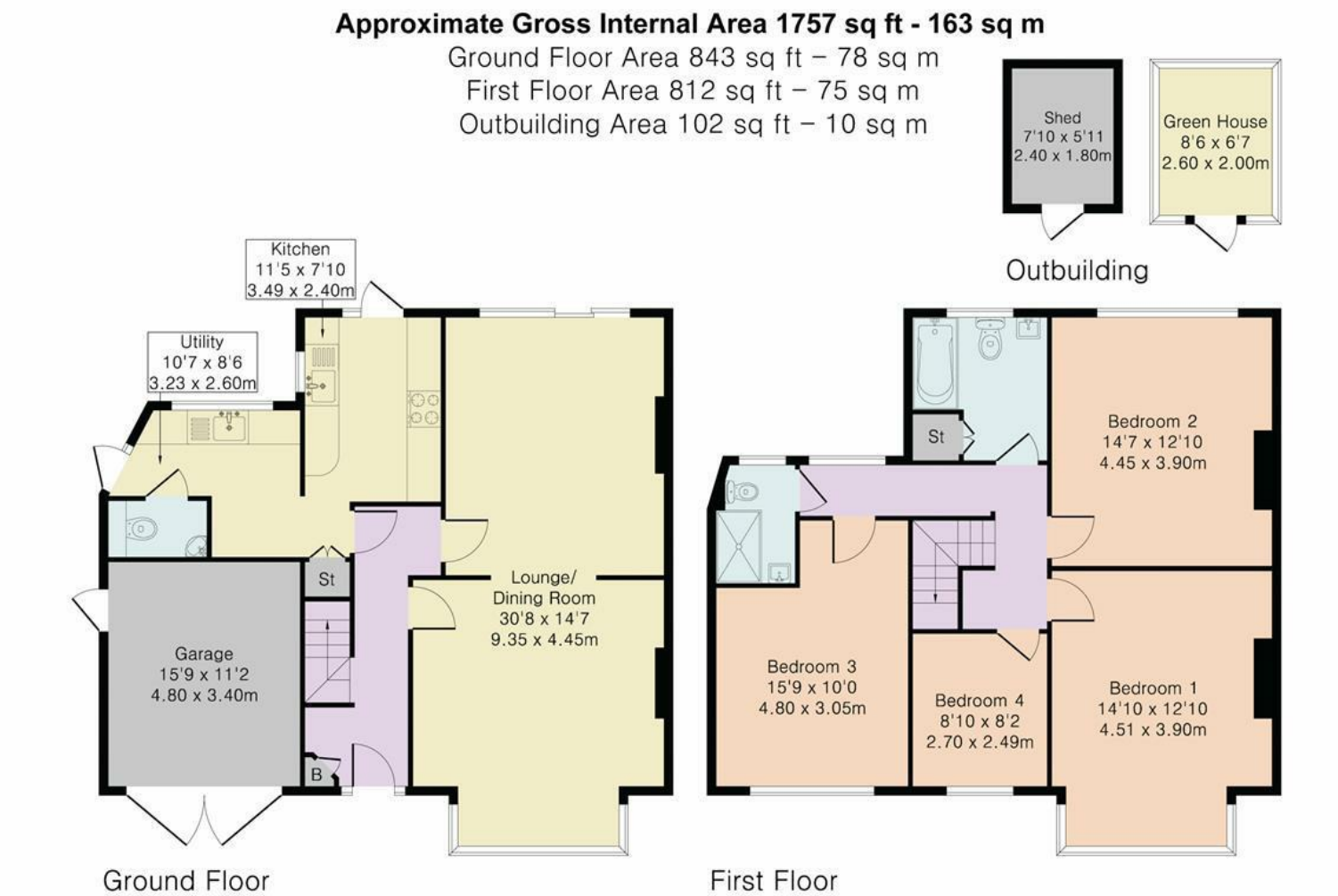
Nestled in the heart of Winchmore Hill's sought-after The Alders and boasting picturesque views across The Green, this charming semi-detached home offers generous living space and a prime location for family life.

Upon entering, you are greeted by a spacious entrance hallway leading to a bright and airy lounge/dining room with bi-fold doors to garden, perfect for both relaxed evenings and formal entertaining. The kitchen is well-appointed and benefits from an adjacent utility room for added convenience. A downstairs cloakroom completes the ground-floor accommodation.

Upstairs, four generous bedrooms provide ample space, complemented by a family bathroom and a separate shower room. The property further features a garage and its own driveway, offering off-street parking for multiple vehicles.

To the rear, a spacious southerly facing garden provides an ideal spot for outdoor dining, gardening, or simply enjoying the sunshine. This family-friendly location is within easy reach of well-regarded primary and secondary schools, making it perfect for those looking to settle in a vibrant community. Commuters will appreciate the excellent transport links, with Winchmore Hill station offering convenient services into central London, as well as nearby bus routes and major road networks for added flexibility.

With the scenic open space of The Green just a stone's throw away, you'll enjoy the best of both peaceful surroundings and easy access to local amenities, shops, and cafés. Early viewing is recommended to fully appreciate all that this delightful home has to offer.



Although Pink Plan Ltd ensures the highest level of accuracy, measurements of doors, windows and rooms are approximate and no responsibility is taken for error, omission or misstatement. These plans are for representation purposes only as defined by RICS code of measuring practise. No guarantee is given on total square footage of the property within this plan. The figure icon is for initial guidance only and should not be relied on as a basis of valuation.

