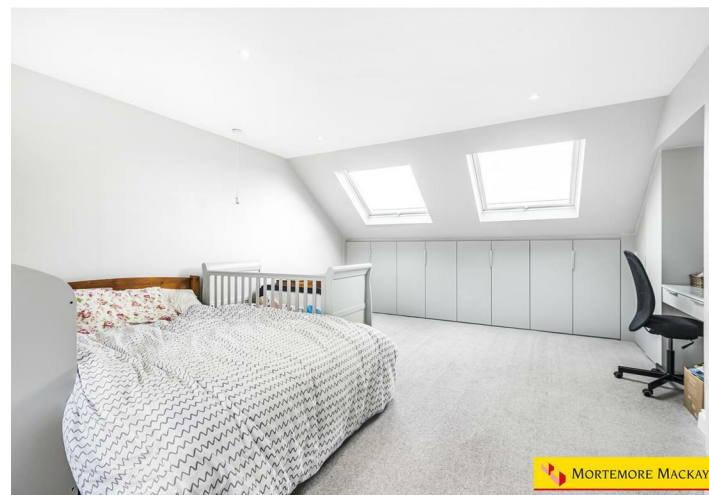
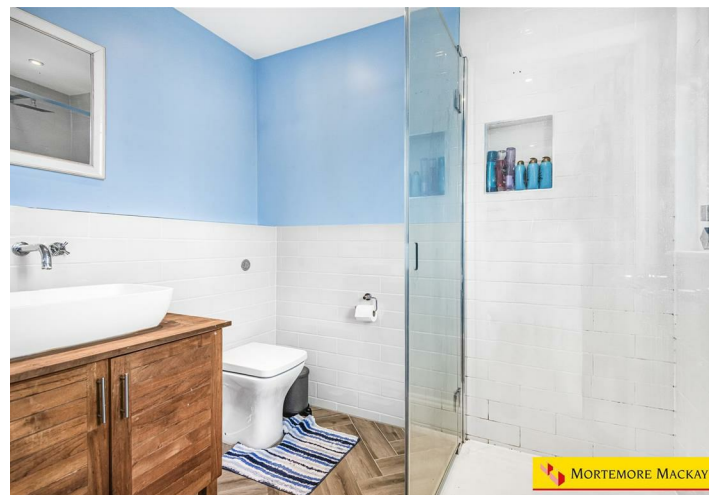




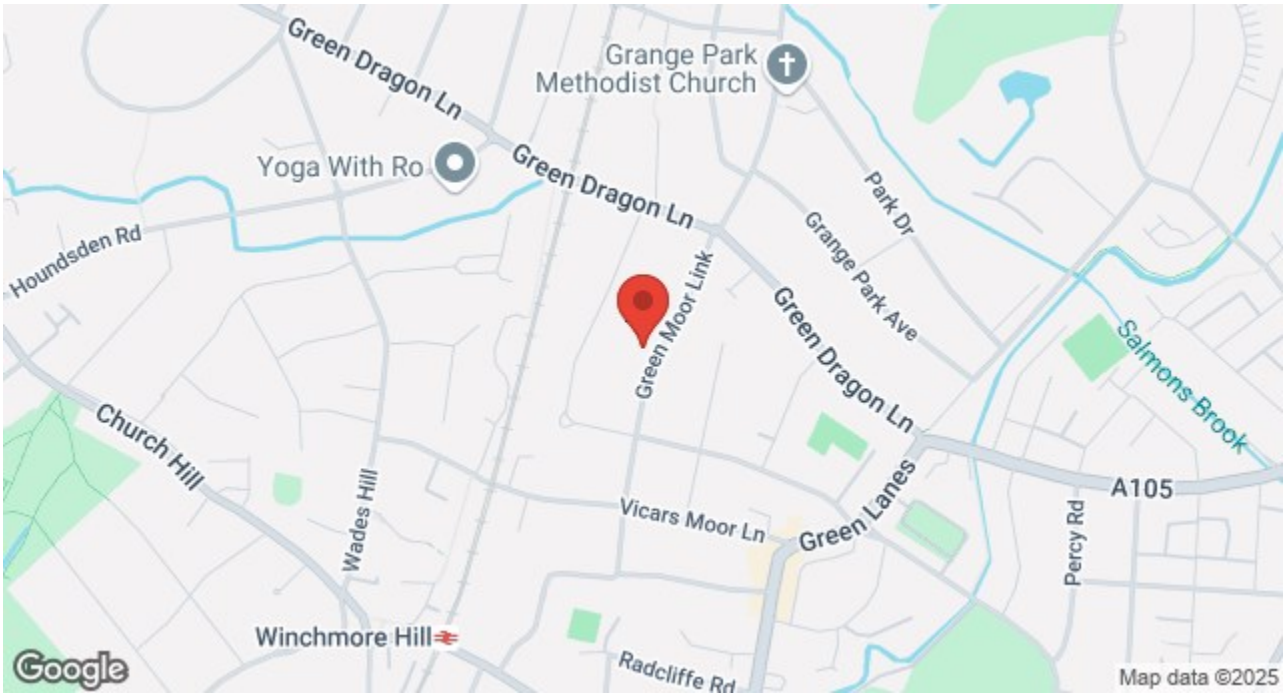
GREEN MOOR LINK, N21 2NN



£1,075,000 Freehold

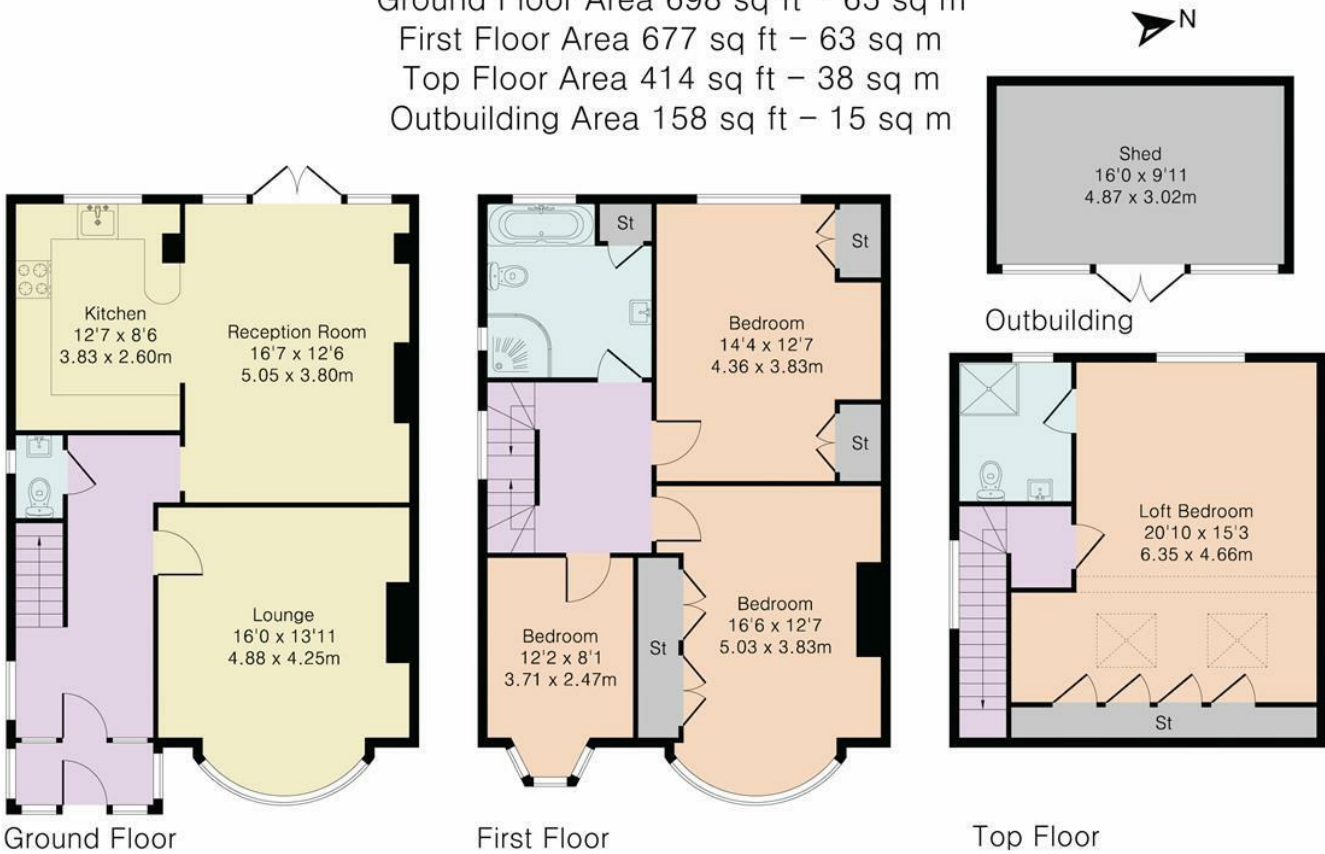
- SEMI DETACHED
- 2 RECEPTIONS
- ENSUITE BATHROOM
- WEST FACING GARDEN
- DOWNSTAIRS CLOAKROOM
- 4 EXCELLENT SIZE BEDROOMS
- MODERN KITCHEN
- FAMILY BATHROOM
- OFF STREET PARKING FOR SEVERAL VEHICLES

Property Details



Approximate Gross Internal Area 1947 sq ft - 181 sq m

Ground Floor Area 698 sq ft – 65 sq m
First Floor Area 677 sq ft – 63 sq m
Top Floor Area 414 sq ft – 38 sq m
Outbuilding Area 158 sq ft – 15 sq m



Although Pink Plan Ltd ensures the highest level of accuracy, measurements of doors, windows and rooms are approximate and no responsibility is taken for error, omission or misstatement. These plans are for representation purposes only as defined by RICS code of measuring practise. No guarantee is given on total square footage of the property within this plan. The figure icon is for initial guidance only and should not be relied on as a basis of valuation.



Energy Efficiency Rating		
	Current	Potential
Very energy efficient - lower running costs		
(92 plus) A		
(81-91) B		80
(69-80) C	66	
(55-68) D		
(39-54) E		
(21-38) F		
(1-20) G		
Not energy efficient - higher running costs		
England & Wales	EU Directive 2002/91/EC	