



RIDGE ROAD, N21 3EA



£690,000 Freehold

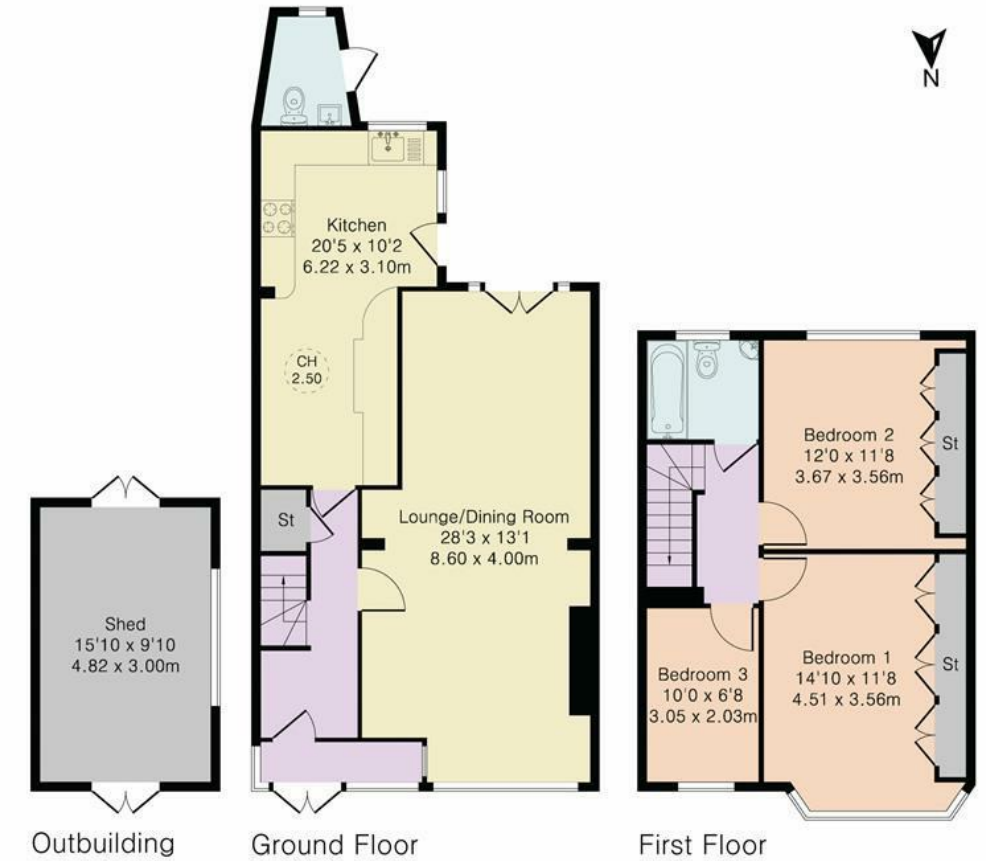
- END OF TERRACE FAMILY HOUSE
- FAMILY BATHROOM
- FITTED KITCHEN
- PRIVATE REAR GARDEN
- REAR ACCESS
- THREE BEDROOMS
- THROUGH RECEPTION ROOM
- OUTSIDE WC
- GARDEN ROOM
- OFF STREET PARKING

Property Details

Mortemore Mackay are pleased to offer for sale this end of terrace family home. The accommodation is arranged over two floors and has three bedrooms, a family bathroom, a through reception room and a fitted kitchen. At the front is a driveway which provides off street parking, side access which leads to a private rear garden, an outside wc and a garden room. At the rear is a gated service road which provides rear access.



Approximate Gross Internal Area 1296 sq ft – 120 sq m
 Ground Floor Area 657 sq ft – 61 sq m
 First Floor Area 483 sq ft – 45 sq m
 Outbuilding Area 156 sq ft – 14 sq m



Although Pink Plan Ltd ensures the highest level of accuracy, measurements of doors, windows and rooms are approximate and no responsibility is taken for error, omission or misstatement. These plans are for representation purposes only as defined by RICS code of measuring practise. No guarantee is given on total square footage of the property within this plan. The figure icon is for initial guidance only and should not be relied on as a basis of valuation.



Energy Efficiency Rating		Current	Potential
Very energy efficient - lower running costs			
(92 plus) A			
(81-91) B			81
(69-80) C		69	
(55-68) D			
(39-54) E			
(21-38) F			
(1-20) G			
Not energy efficient - higher running costs			
England & Wales		EU Directive 2002/91/EC	

