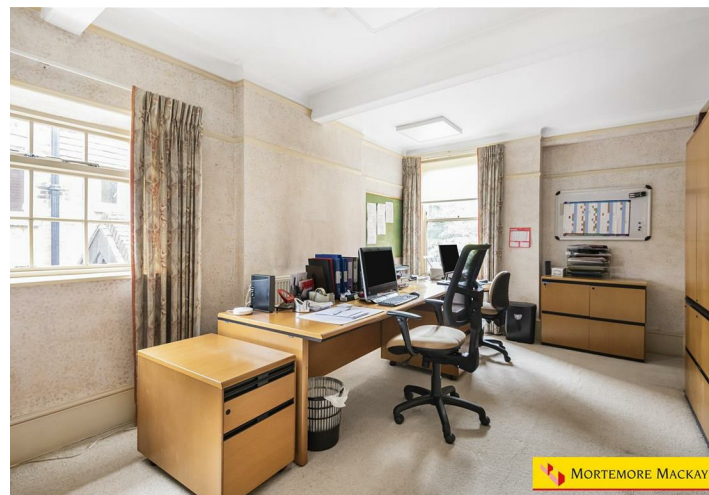
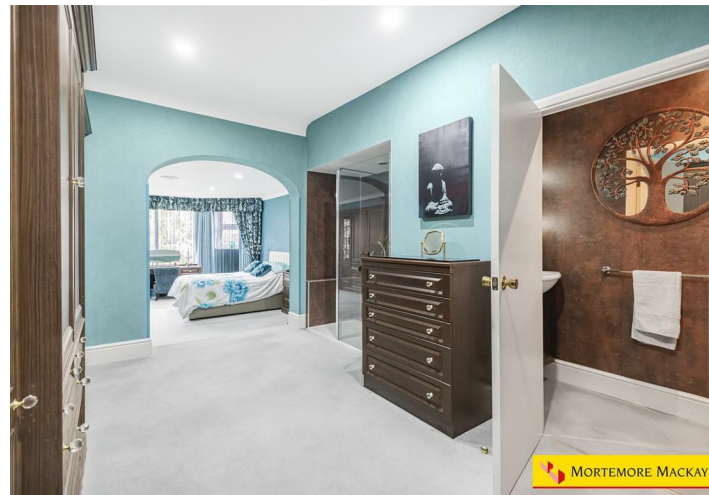


OLD PARK RIDINGS, N21 2EP



£1,600,000 Freehold

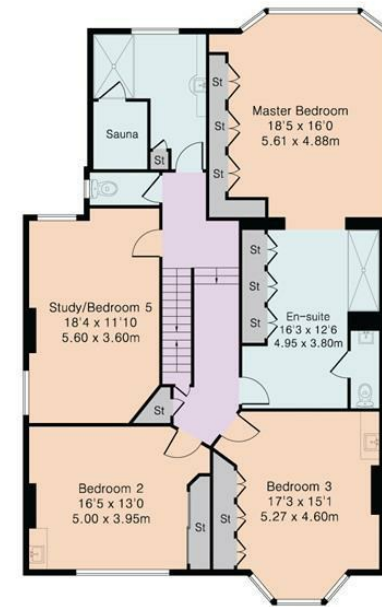
- EDWARDIAN DOUBLE FRONTED DETACHED
- 4182 SQ/FT
- 4 RECEPTION ROOMS
- KITCHEN
- UTILITY
- DOWNSTAIRS CLOAKROOM
- SIX DOUBLE BEDROOMS
- ENSUITE AND DRESSING AREA
- FAMILY SHOWER ROOM AND SAUNA
- 90' X 48' REAR GARDEN

Property Details

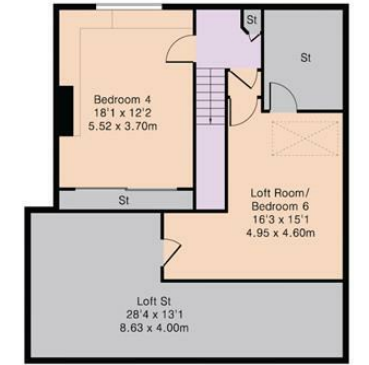


Ground Floor

Approximate Gross Internal Area 4182 sq ft – 388 sq m
 Ground Floor Area 1850 sq ft – 172 sq m
 First Floor Area 1488 sq ft – 138 sq m
 Top Floor Area 844 sq ft – 78 sq m



First Floor



Top Floor

Energy Efficiency Rating		Current	Potential
Very energy efficient - lower running costs			
(92 plus)	A		
(81-91)	B		
(69-80)	C		
(55-68)	D		
(39-54)	E		
(21-38)	F		
(1-20)	G		
Not energy efficient - higher running costs			
England & Wales		EU Directive 2002/91/EC	

