



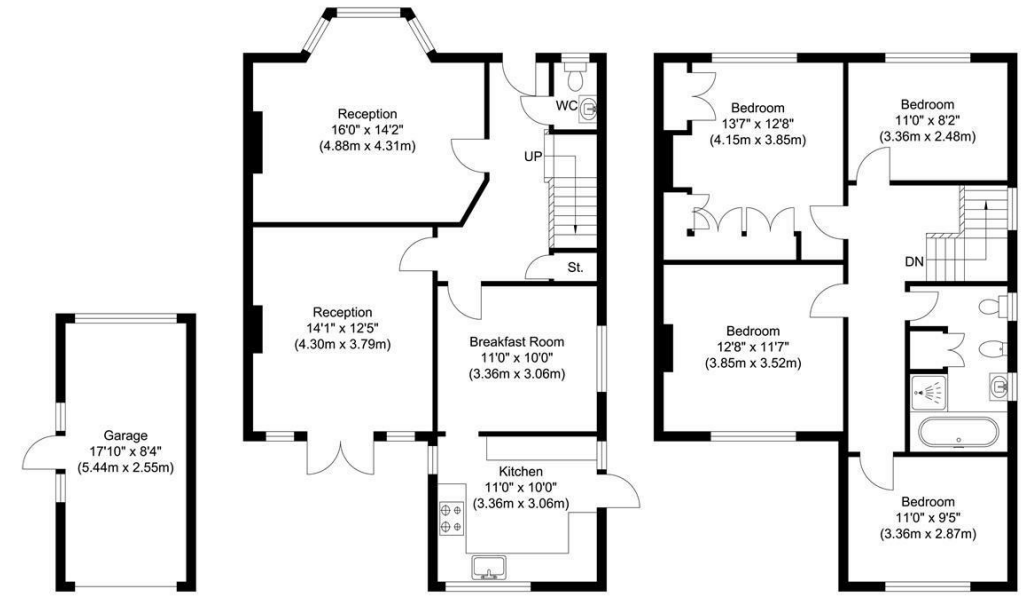
OLD PARK AVENUE, EN2 6PJ



£880,000 Freehold

- SEMI-DETACHED
- KITCHEN
- CLOAKROOM
- LARGE BATHROOM
- GARAGE
- TWO RECEPTIONS
- BREAKFAST ROOM
- FOUR DOUBLE BEDROOMS
- WEST FACING GARDEN
- OFF STREET PARKING

Property Details



Garage
Approximate Floor Area
149.29 sq. ft.
(13.87 sq. m)

Ground Floor
Approximate Floor Area
741.20 sq. ft.
(68.86 sq. m)

First Floor
Approximate Floor Area
719.78 sq. ft.
(66.87 sq. m)

Total Floor Area
Approximate Floor Area
1610.28 sq. ft.
(149.60 sq. m)



Energy Efficiency Rating		
	Current	Potential
Very energy efficient - lower running costs		
(92 plus) A		
(81-91) B		82
(69-80) C		
(55-68) D	59	
(39-54) E		
(21-38) F		
(1-20) G		
Not energy efficient - higher running costs		
England & Wales	EU Directive 2002/91/EC	