



GREEN LANES, N21 2RW



£275,000 Leasehold

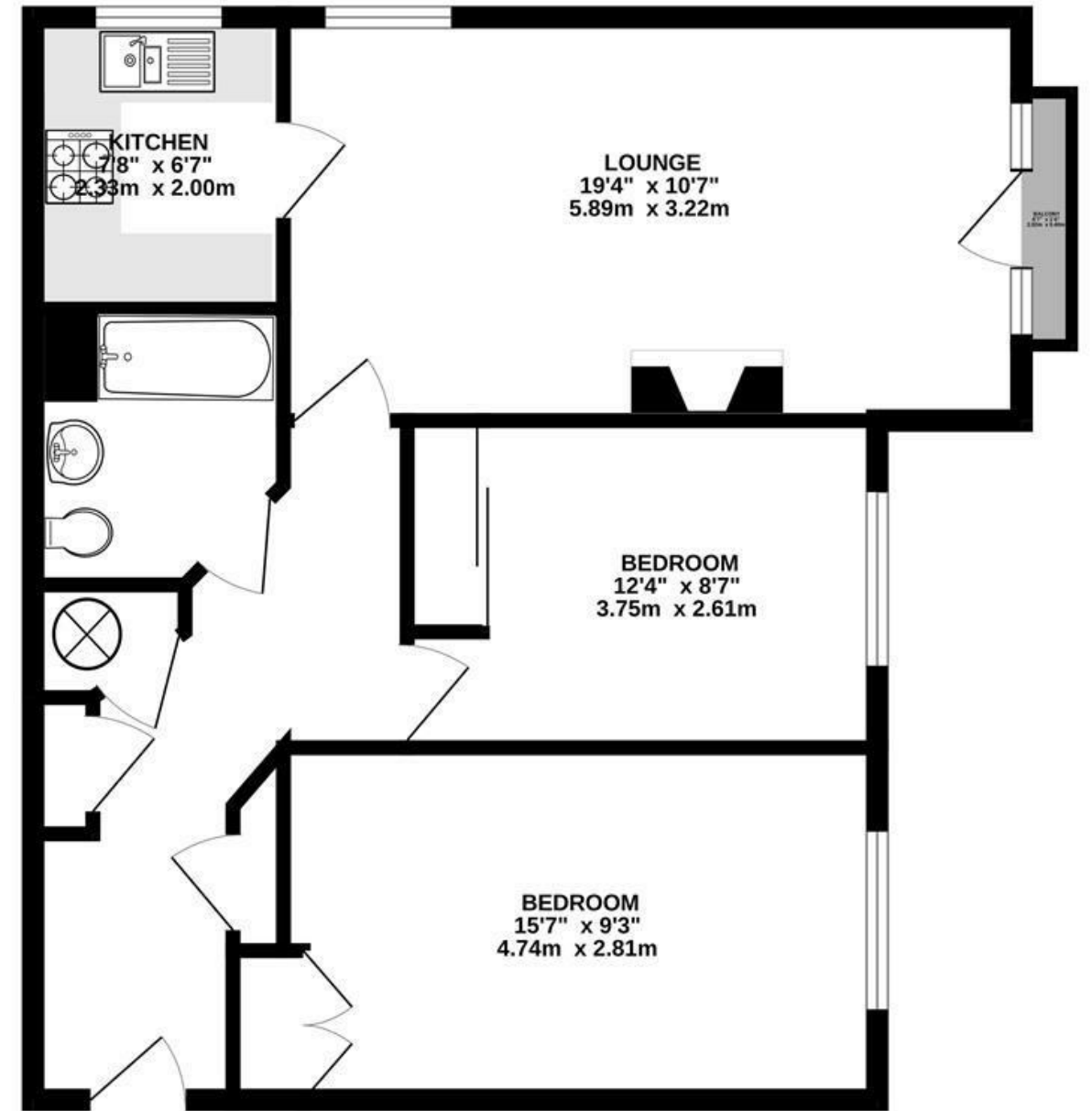
- RETIREMENT FLAT
- DUAL ASPECT LOUNGE
- BATHROOM
- LAUNDRY ROOM
- CLOSE TO SHOPS
- 2 DOUBLE BEDROOMS
- KITCHEN
- COMMUNAL RESIDENTS LOUNGE
- GARDENS

Property Details

We have pleasure in offering for sale this first floor RETIREMENT PROPERTY situated in this popular development close to local shops, restaurants, buses and doctors. The property has a dual aspect lounge with Juliet balcony, 2 double bedrooms, kitchen, bathroom. There is a communal lounge, visitors suite, laundry room and gardens.



GROUND FLOOR
656 sq.ft. (61.0 sq.m.) approx.



TOTAL FLOOR AREA : 656 sq.ft. (61.0 sq.m.) approx.

Whilst every attempt has been made to ensure the accuracy of the floorplan contained here, measurements of doors, windows, rooms and any other items are approximate and no responsibility is taken for any error, omission or mis-statement. This plan is for illustrative purposes only and should be used as such by any prospective purchaser. The services, systems and appliances shown have not been tested and no guarantee as to their operability or efficiency can be given.
Made with Metropix ©2024

Energy Efficiency Rating		Current	Potential
Very energy efficient - lower running costs			
(92 plus) A			
(81-91) B		80	83
(69-80) C			
(55-68) D			
(39-54) E			
(21-38) F			
(1-20) G			
Not energy efficient - higher running costs			
England & Wales	EU Directive 2002/91/EC		

