



RINGMER PLACE, N21 2DD



£1,485,000 Freehold

- DETACHED BUNGALOW
- 2 RECEPTIONS
- 2 BATHROOMS
- LARGE PLOT
- GARAGE
- DOUBLE FRONTED
- 3 BEDROOMS
- GATED PRIVATE ROAD
- POTENTIAL TO EXTEND
- 75' X 75' GARDEN

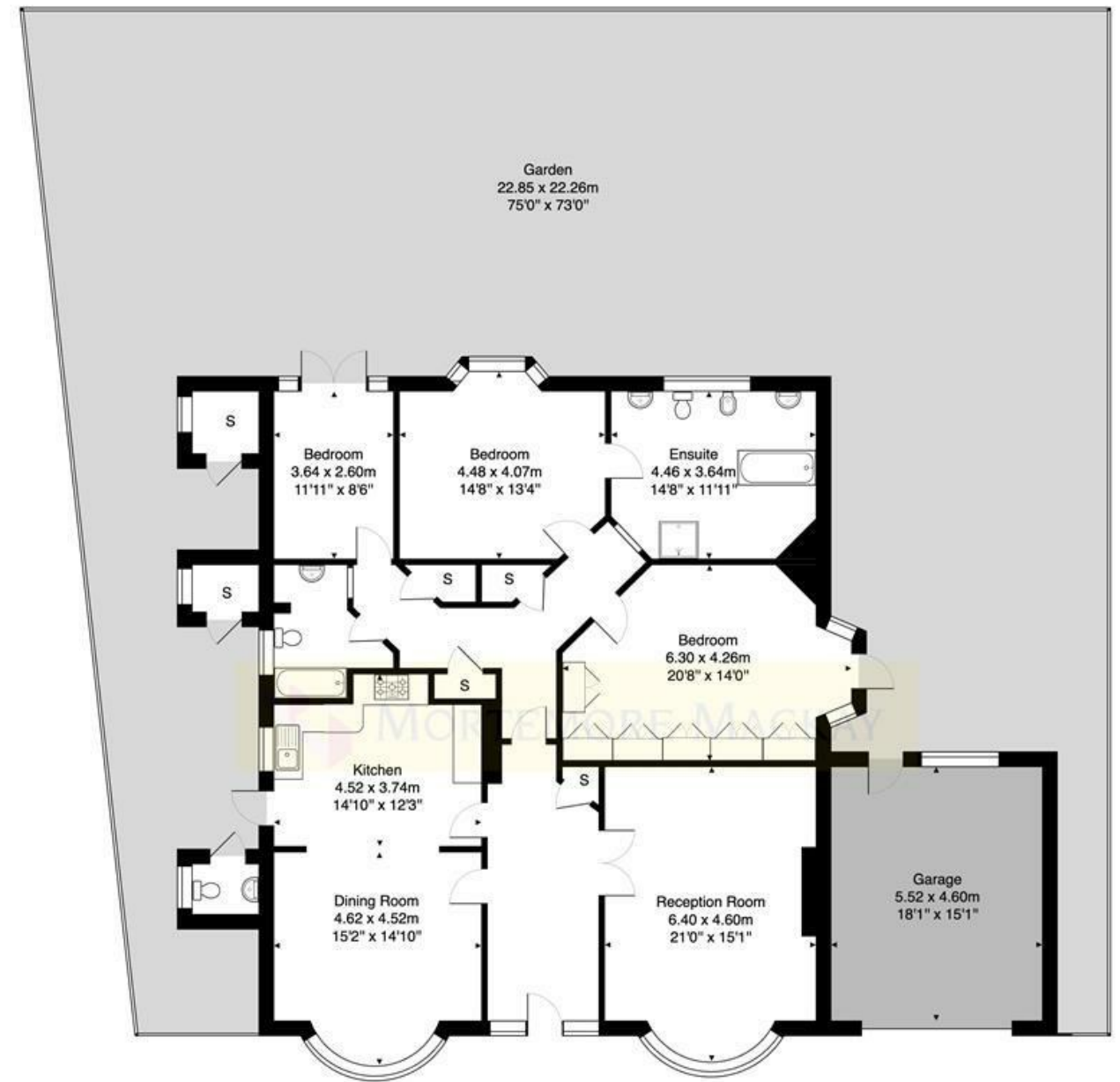
Property Details

We have pleasure in offering for sale this double fronted detached bungalow occupying a large plot and in a sought after gated development of 8 exclusive properties. The accommodation consists of two receptions, 3 bedrooms with an ensuite to the master, family bathroom and a kitchen. The rear garden is approximately 75' x 75' with mature flower and shrub borders and remainder laid to lawn. At the front is a lawn area with driveway to the side and garage. The property has tremendous scope to extend subject to obtaining any necessary consents.



Ringmer Place

Approximate Gross Internal Area 197.1 m² ... 2121 ft² (excluding outbuildings/ storages, garden)



GROUND FLOOR

This Plan is for illustration purpose only and used as general indication of the proposed layout of the property. Dimensions are maximum and approximate and may vary.

Energy Efficiency Rating

	Current	Potential
Very energy efficient - lower running costs		
(92 plus) A		85
(81-91) B		
(69-80) C		
(55-68) D		
(39-54) E	45	
(21-38) F		
(1-20) G		
Not energy efficient - higher running costs		
England & Wales	EU Directive 2002/91/EC	

