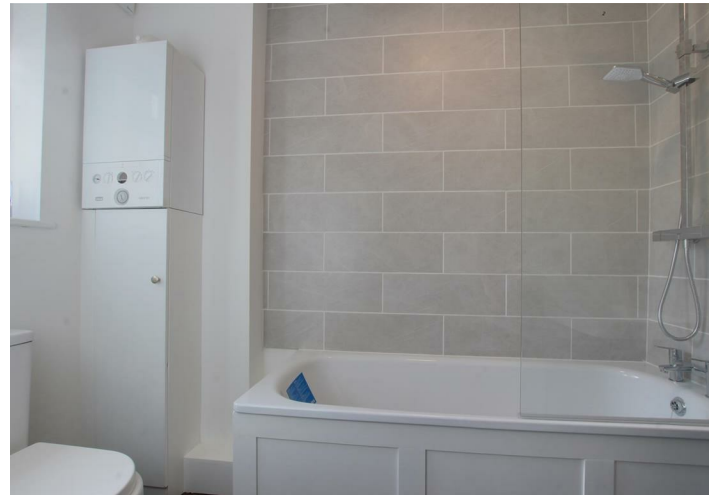


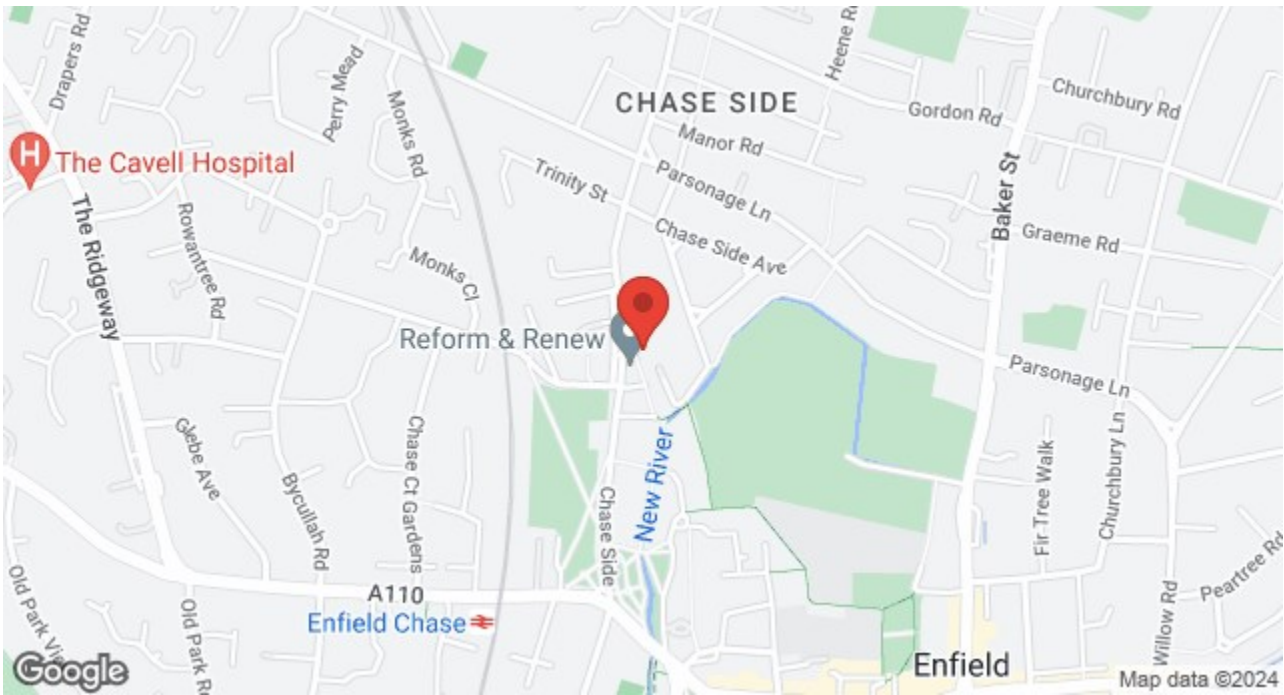
CHASE SIDE, EN2 6NL



£385,000 Leasehold

- NEWLY REFURBISHED
- LOUNGE
- FAMILY BATHROOM
- LONG LEASE
- 2 BEDROOMS
- KITCHEN
- GARDEN

Property Details



Approximate Gross Internal Area
72.40 sq m / 779.30 sq ft

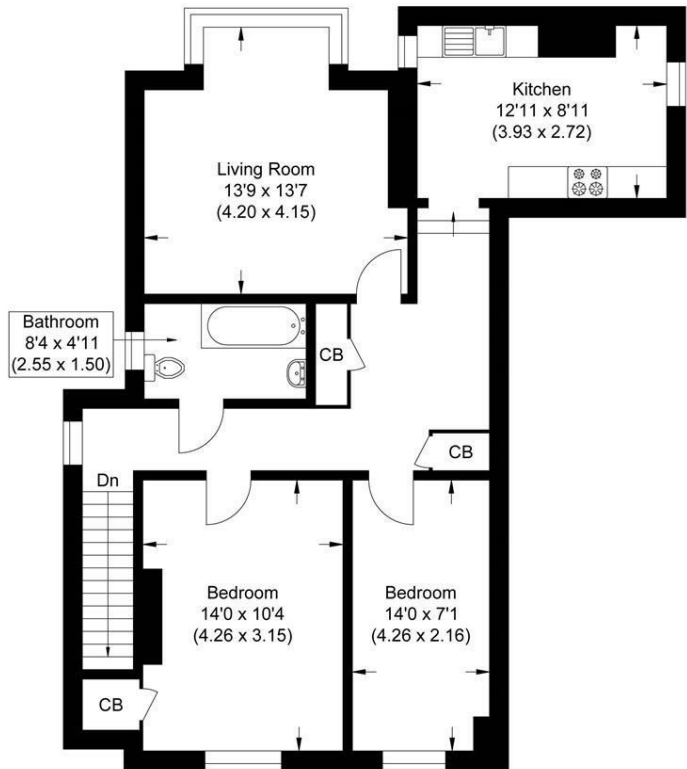


Illustration for identification purposes only, measurements are approximate, not to scale.



Energy Efficiency Rating		
	Current	Potential
Very energy efficient - lower running costs		
(92 plus) A		
(81-91) B		
(69-80) C	71	80