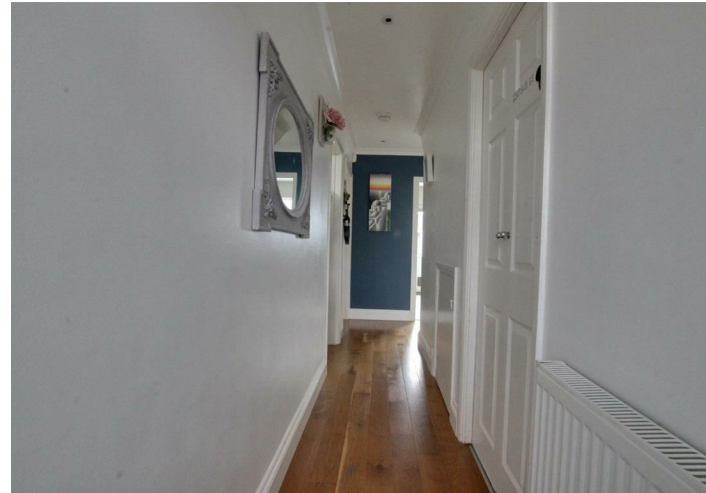




MERRIDENE, N21 1RD

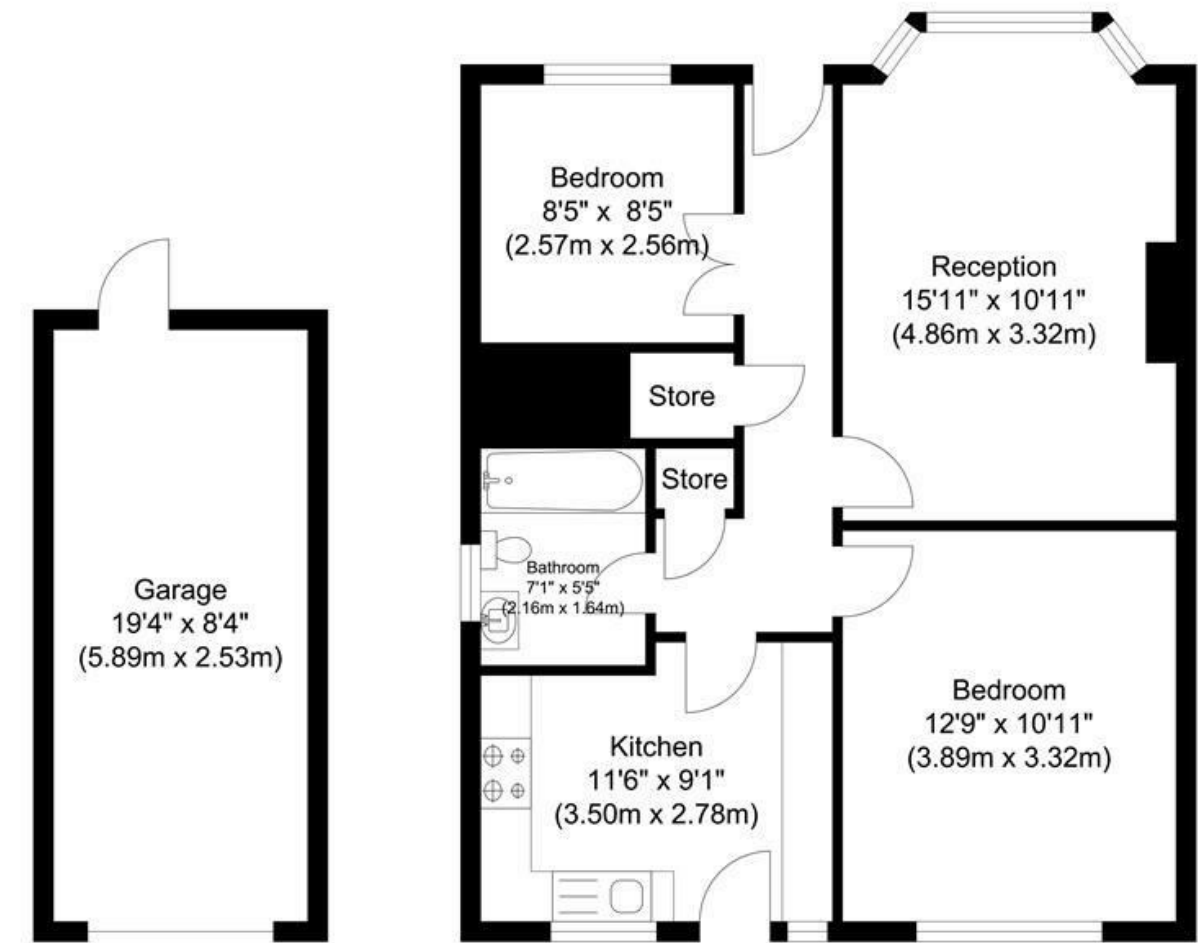
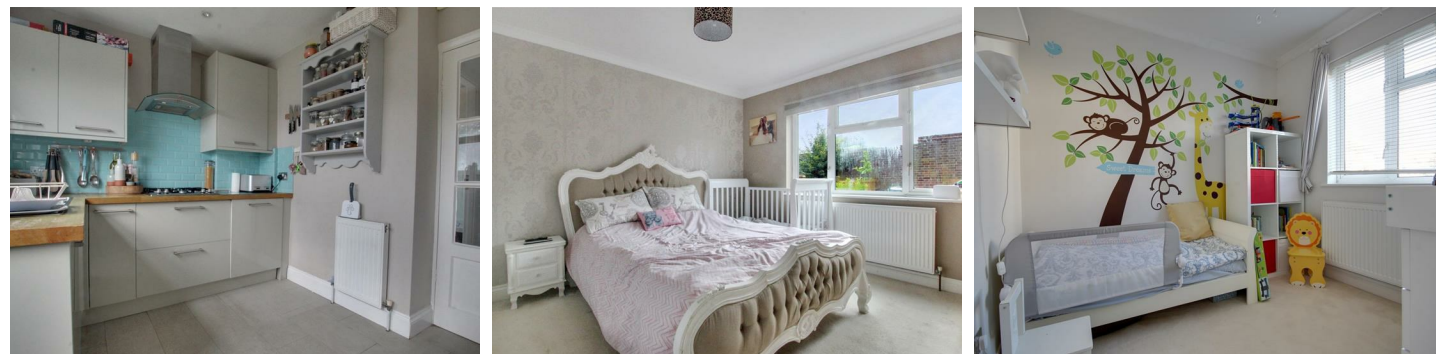


£465,000 Leasehold - Share of Freehold

- GROUND FLOOR
- KITCHEN
- GARDEN
- LOUNGE
- TWO BEDROOMS
- GARAGE

Property Details

We have pleasure in offering for sale this ground floor maisonette just moments away from Grange Park station, restaurants, shops and buses. Lounge, kitchen, 2 bedrooms, bathroom, garden, garage.



Garage
Approximate Floor Area
160.38 sq. ft.
(14.90 sq. m)

Ground Floor
Approximate Floor Area
632.48 sq. ft.
(58.76 sq. m)

Total Floor Area
Approximate Floor Area
792.86 sq. ft.
(73.66 sq. m)

Energy Efficiency Rating		Current	Potential
Very energy efficient - lower running costs			
(92 plus)	A		
(81-91)	B		
(69-80)	C		
(55-68)	D	60	73
(39-54)	E		
(21-38)	F		
(1-20)	G		
Not energy efficient - higher running costs			
England & Wales		EU Directive 2002/91/EC	

