



## PAULIN DRIVE, N21 1AZ



### Asking price £665,000 Leasehold - Share of Freehold

- TOP FLOOR APARTMENT
- TWO DOUBLE BEDROOMS
- SPACIOUS RECEPTION ROOM
- BALCONY OFF THE RECEPTION ROOM
- CHAIN FREE
- LIFT
- TWO BATHROOMS
- FITTED KITCHEN
- UNDERGROUND PARKING SPACE
- CONVENIENTLY LOCATED

## Property Details

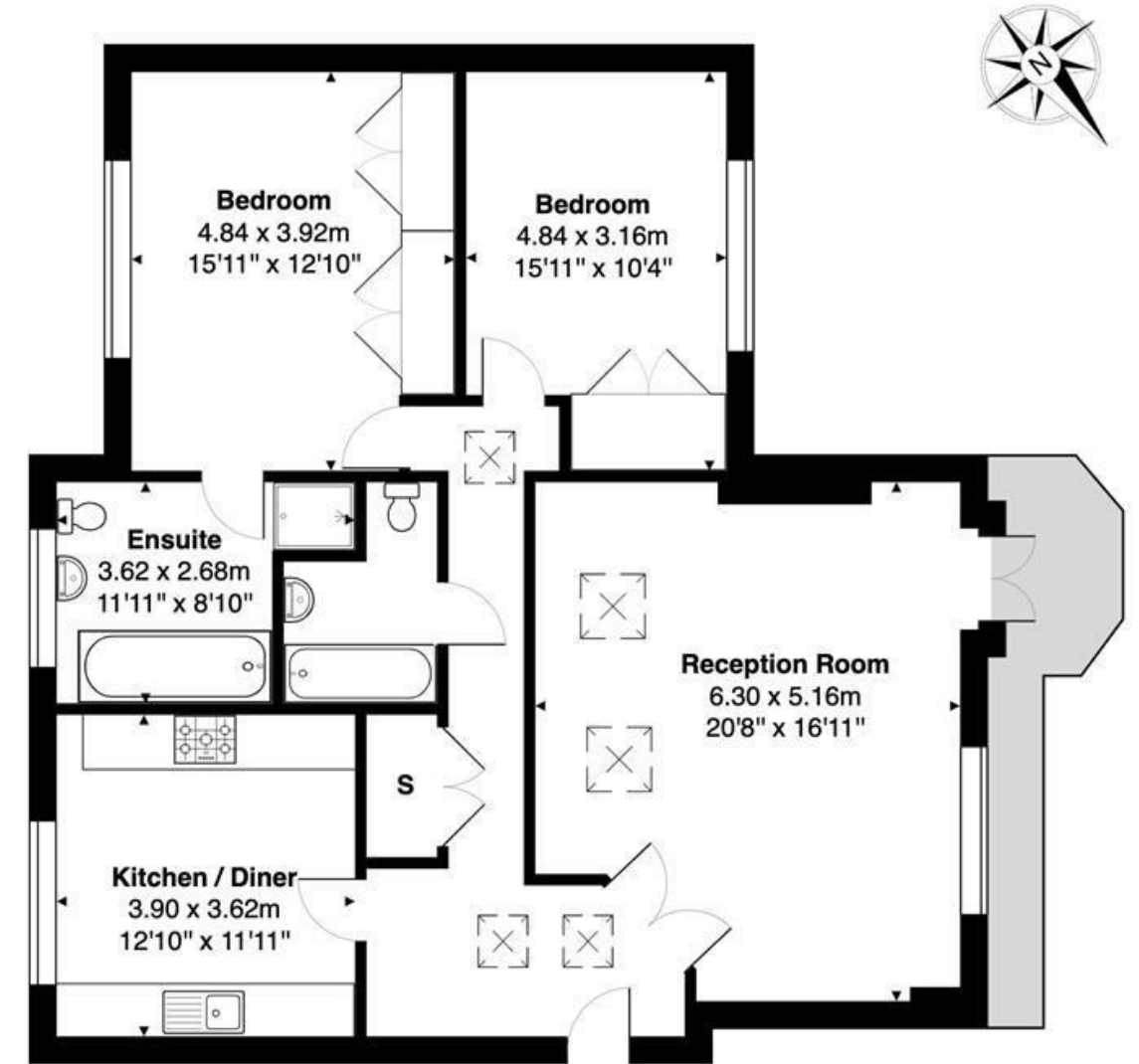
Mortemore Mackay are pleased to offer for sale this bright top floor apartment in this prestigious development situated close to Winchmore Hill's station and The Green. The accommodation extends to 1163 square feet and provides two double bedrooms, two bathrooms, one of which is en-suite, a spacious reception room with access to a balcony and a fitted kitchen with a comprehensive range of wall and base units and integrated appliances.

There are also well maintained communal gardens with a covered barbeque and seating area and an allocated parking space which is gated and underground.



## Belvedere Court- N21

Approximate Gross Internal Area 108.0 m<sup>2</sup> ... 1163 ft<sup>2</sup>



SECOND FLOOR

This Plan is for illustration purpose only and used as general indication of the proposed layout of the property. Dimensions are maximum and approximate and may vary.



Energy Efficiency Rating		Current	Potential
Very energy efficient - lower running costs			
(92 plus)	A		
(81-91)	B		
(69-80)	C	71	76
(55-68)	D		
(39-54)	E		
(21-38)	F		
(1-20)	G		
Not energy efficient - higher running costs			
England & Wales		EU Directive 2002/91/EC	

