



**Trueman
Letting
Company**



24A Chalet Hill Bordon

£850 PCM

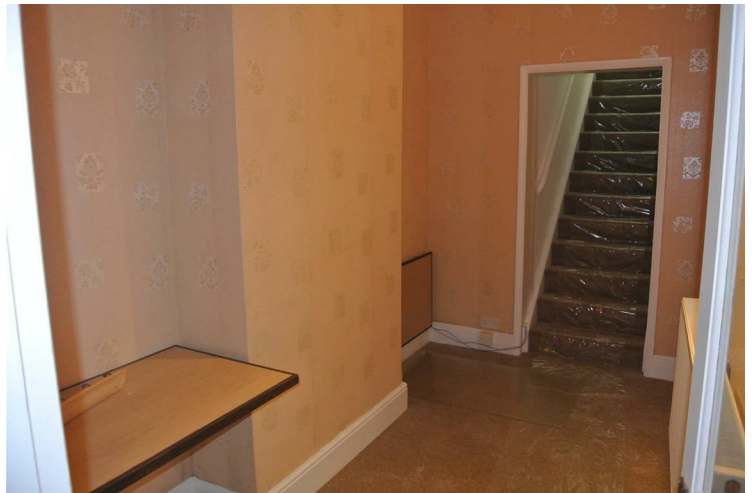
A deceptively spacious one bedroom maisonette with allocated parking within walking distance of all local amenities including the Forest Shopping Centre. A viewing is strongly recommended. The property was redecorated and recarpeted in 2024. EPC D. COUNCIL TAX B

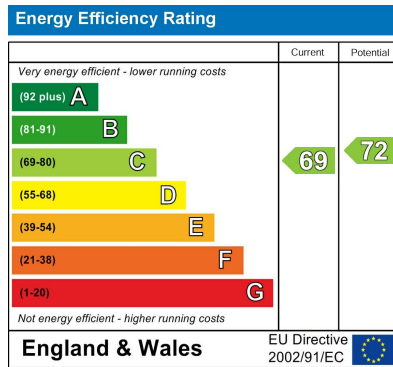


- Private front door into entrance lobby. Hanging space for coats.
- Large entrance hallway with two fold away desks (tenants WFH) and data wired. Stairs to F/F
- Open plan kitchen/sitting room. The kitchen comprises gas hob, electric oven under, fridge and free
- Sitting room with high ceilings, range of cupboards and two large front aspect windows.



- Bedroom with wardrobe cupboard and large window leads into an inner landing
- with storage cupboard housing washer/drier
- Bathroom with electric shower over the bath, large window.
- Outside - allocated parking space.
- EPC D AND COUNCIL TAX BANDING B





Agents Note: Whilst every care has been taken to prepare these particulars, they are for guidance purposes only. All measurements are approximate and are for general guidance purposes only and whilst every care has been taken to ensure their accuracy, they should not be relied upon and potential buyers/tenants are advised to recheck the measurements

Trueman Letting Company Lettings 01252 711227
 5a Castle Street
 Farnham
 Surrey
 GU9 7HR
 lettings@tlc-farnham.co.uk
 www.tlc-farnham.co.uk

