



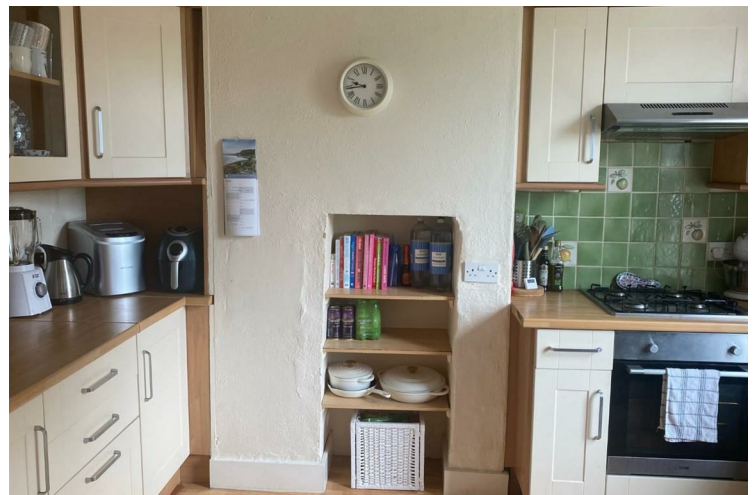
**Trueman
Letting
Company**

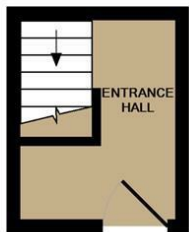


4 St James Terrace Surrey

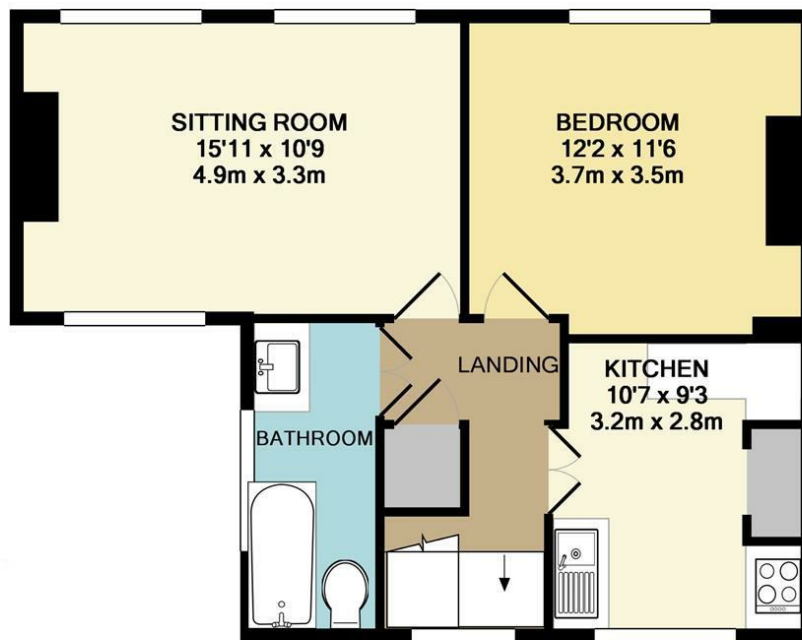
£1,000 PCM

A spacious one bed first floor maisonette flat forming part of a Victorian house and conveniently located in Farnham Town Centre with easy access to all local amenities and Farnham main line station. Communal outside space. Council Tax C, EPC D.





GROUND FLOOR
APPROX. FLOOR
AREA 46 SQ.FT.
(4.2 SQ.M.)



1ST FLOOR
APPROX. FLOOR
AREA 513 SQ.FT.
(47.6 SQ.M.)

TOTAL APPROX. FLOOR AREA 558 SQ.FT. (51.9 SQ.M.)

Whilst every attempt has been made to ensure the accuracy of the floor plan contained here, measurements of doors, windows, rooms and any other items are approximate and no responsibility is taken for any error, omission, or mis-statement. This plan is for illustrative purposes only and should be used as such by any prospective purchaser. The services, systems and appliances shown have not been tested and no guarantee as to their operability or efficiency can be given
Made with Metropix ©2015



Energy Efficiency Rating		
	Current	Potential
Very energy efficient - lower running costs		
(92 plus) A	66	75
(81-91) B		
(69-80) C		
(55-68) D		
(39-54) E		
(21-38) F		
(1-20) G		
Not energy efficient - higher running costs		
England & Wales		
EU Directive 2002/91/EC		

Agents Note: Whilst every care has been taken to prepare these particulars, they are for guidance purposes only. All measurements are approximate and are for general guidance purposes only and whilst every care has been taken to ensure their accuracy, they should not be relied upon and potential buyers/tenants are advised to recheck the measurements

Trueman Letting Company Lettings 01252 711227

5a Castle Street

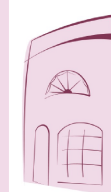
Farnham

Surrey

GU9 7HR

lettings@tlc-farnham.co.uk

www.tlc-farnham.co.uk



**Trueman
Letting
Company**