



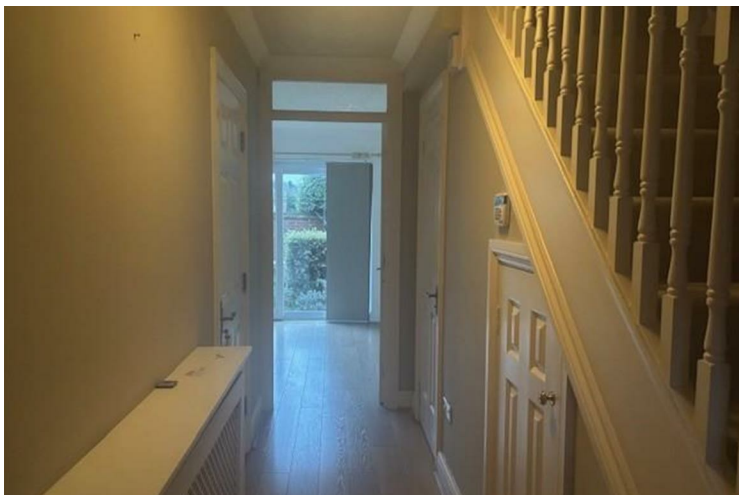
**Trueman  
Letting  
Company**



**16 Borelli Mews**

**£1,850 Per**

A deceptively spacious 2/3 bedroom Townhouse located in the heart of Farnham Town Centre with the added benefit of a single garage and courtyard garden. EPC C, Council Tax Band F. Available January 2026.



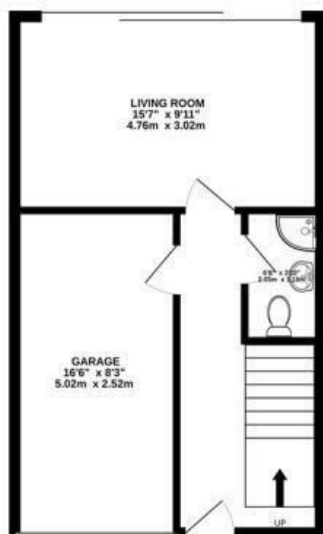
- Hallway with wooden flooring leading into Bedroom 3/Study with doors out to courtyard garden
- Downstairs shower room. Door into single garage - Tumble Drier.
- First floor comprises Large Sitting/Dining Room
- Good sized Kitcehn with appliances hatch to Dining End.
- Second floor comprises Master Bedroom with range of fitted wardrobe cupboards



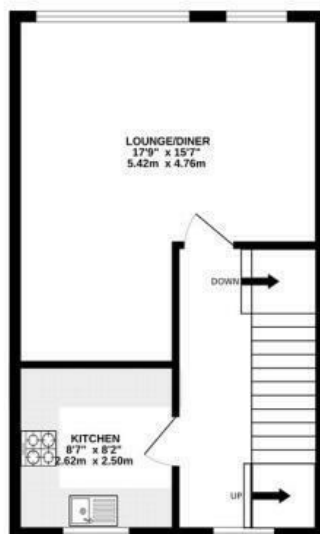
- Second Double Bedroom with small walk in wardrobe cupboard.
- Family Bathroom with shower over the Bath
- Courtyard Garden
- Single Garage and parking space.
- EPC C Council tax band F



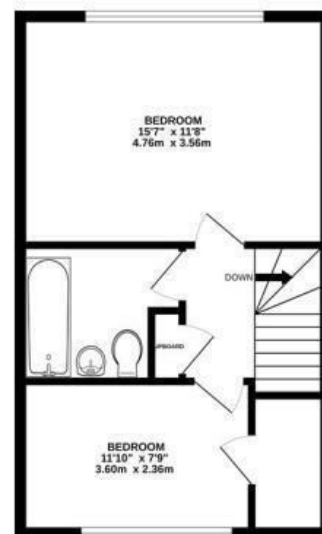
GROUND FLOOR



1ST FLOOR



2ND FLOOR



Whilst every attempt has been made to ensure the accuracy of the floorplan contained here, measurements of doors, windows, rooms and any other items are approximate and no responsibility is taken for any error, omission or mis-statement. This plan is for illustrative purposes only and should be used as such by any prospective purchaser. The services, systems and appliances shown have not been tested and no guarantee as to their operability or efficiency can be given.  
Made with Metropix ©2025



Energy Efficiency Rating		
	Current	Potential
Very energy efficient - lower running costs		
(92 plus) <b>A</b>		
(81-91) <b>B</b>		
(69-80) <b>C</b>		
(55-68) <b>D</b>		
(39-54) <b>E</b>		
(21-38) <b>F</b>		
(1-20) <b>G</b>		
Not energy efficient - higher running costs		
<b>England &amp; Wales</b>	EU Directive 2002/91/EC	

Agents Note: Whilst every care has been taken to prepare these particulars, they are for guidance purposes only. All measurements are approximate and are for general guidance purposes only and whilst every care has been taken to ensure their accuracy, they should not be relied upon and potential buyers/tenants are advised to recheck the measurements

Trueman Letting Company Lettings  
5a Castle Street  
Farnham  
Surrey  
GU9 7HR

01252 711227  
lettings@tlc-farnham.co.uk  
www.tlc-farnham.co.uk

