



**Trueman
Letting
Company**



86 The Chantry's Farnham

£1,250 PCM

A spacious two-bedroom apartment that has had a newly fitted kitchen and been freshly decorated throughout. The property is conveniently located on the West Side of Farnham Town Centre, with a short walk to the Town Centre and easy access to the A31. Sharers and students will be considered.

Council Tax Band B EPC C

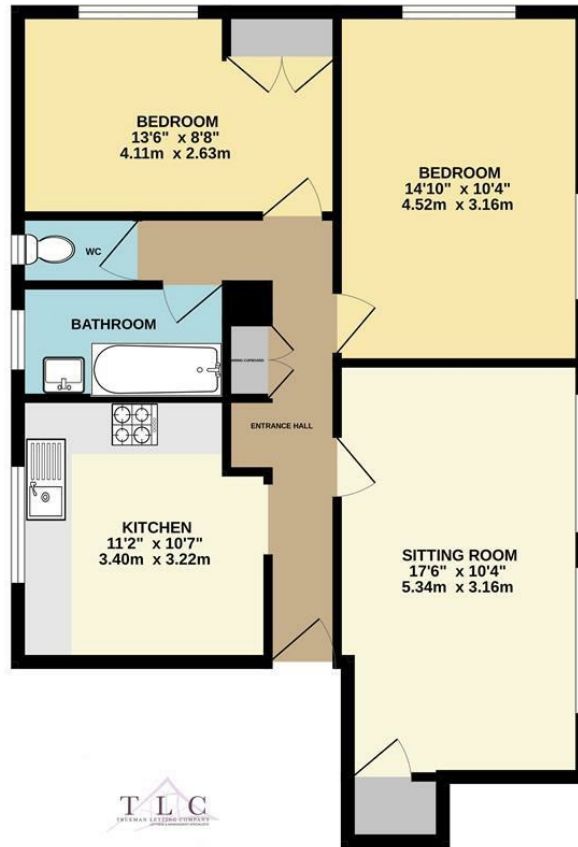


- Entrance hallway with storage cupboard
- Newly fitted kitchen with appliances
- Spacious lounge with storage cupboard
- 2 Double Bedrooms
- Separate WC
- Bathroom with shower over the bath





GROUND FLOOR
713 sq.ft. (66.2 sq.m.) approx.



TOTAL FLOOR AREA: 713 sq.ft. (66.2 sq.m.) approx.

Whilst every attempt has been made to ensure the accuracy of the floorplan contained here, measurements of doors, windows, rooms and any other items are approximate and no responsibility is taken for any error, omission or mis-statement. This plan is for illustrative purposes only and should be used as such by any prospective purchaser. The services, systems and appliances shown have not been tested and no guarantee as to their operability or efficiency can be given.
Made with Metropix ©2025



Energy Efficiency Rating		
	Current	Potential
Very energy efficient - lower running costs		
(92 plus) A		
(81-91) B		
(69-80) C	78	78
(55-68) D		
(39-54) E		
(21-38) F		
(1-20) G		
Not energy efficient - higher running costs		
England & Wales		EU Directive 2002/91/EC

Agents Note: Whilst every care has been taken to prepare these particulars, they are for guidance purposes only. All measurements are approximate and are for general guidance purposes only and whilst every care has been taken to ensure their accuracy, they should not be relied upon and potential buyers/tenants are advised to recheck the measurements

Trueman Letting Company Lettings 01252 711227
5a Castle Street lettings@tlc-farnham.co.uk
Farnham www.tlc-farnham.co.uk
Surrey
GU9 7HR

