



**Trueman  
Letting  
Company**

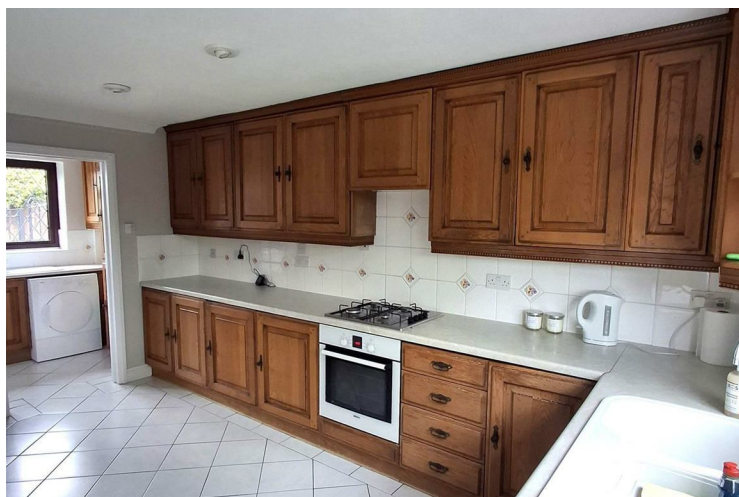


## **The Gatehouse 1A St Peters Park Aldershot**

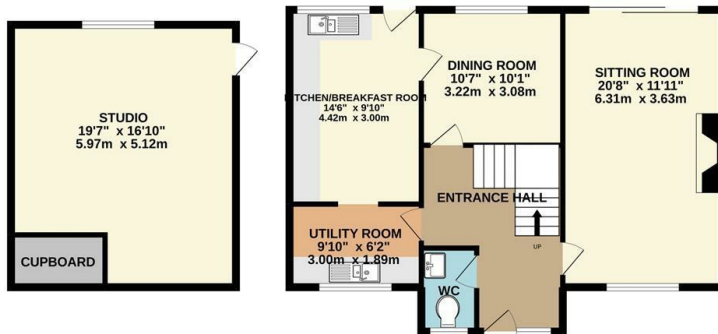
**£2,250 PCM**

A very spacious four bedroom detached family home with the added benefit of a converted garage that can be used as a large office or playroom for the children. The Gatehouse presents an opportunity to acquire a modern detached house that is both spacious and inviting. This delightful property boasts two well-appointed reception rooms. With four generously sized bedrooms, there is ample space for family living. The property is conveniently located within a short drive of Farnham and Aldershot Town Centres and main line stations.

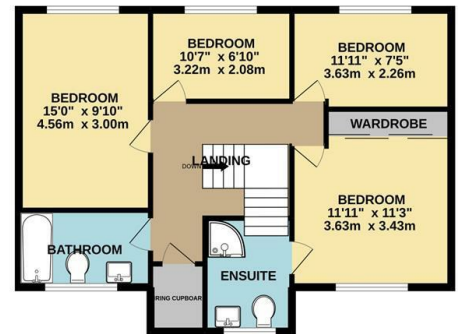
EPC Rating D. Council Tax Band F.



GROUND FLOOR  
1023 sq.ft. (95.1 sq.m.) approx.



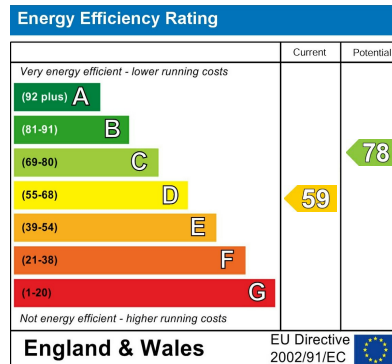
1ST FLOOR  
704 sq.ft. (65.4 sq.m.) approx.



TOTAL FLOOR AREA: 1727 sq.ft. (160.5 sq.m.) approx.

Whilst every attempt has been made to ensure the accuracy of the floorplan contained here, measurements of doors, windows, rooms and any other items are approximate and no responsibility is taken for any error, omission or mis-statement. This plan is for illustrative purposes only and should be used as such by any prospective purchaser. The services, systems and appliances shown have not been tested and no guarantee as to their operability or efficiency can be given.

Made with Metropix ©2022



Agents Note: Whilst every care has been taken to prepare these particulars, they are for guidance purposes only. All measurements are approximate and are for general guidance purposes only and whilst every care has been taken to ensure their accuracy, they should not be relied upon and potential buyers/tenants are advised to recheck the measurements

**Trueman Letting Company Lettings** 01252 711227  
 5a Castle Street  
 Farnham  
 Surrey  
 GU9 7HR  
 lettings@tlc-farnham.co.uk  
 www.tlc-farnham.co.uk

