



**Trueman
Letting
Company**



9 Thistledown Close Farnham

£1,395 PCM

A modern two bedroom mid terraced property located in a quiet development within a short drive of Farnham Town Centre and the Mainline station with allocated parking and garden. EPC C, COUNCIL TAX BAND D



- Entrance Hall • Cloakroom with WC • Modern Fitted Kitchen with appliances and granite worktops • Lounge/Dining room with French doors leading to garden with decking and lawn

ENTRANCE HALL

CLOAKROOM

KITCHEN

Modern Fitted Kitchen with appliances and granite worktops

LOUNGE/DINER

Lounge/Dining room with French doors leading to garden with decking and lawn

GARDEN

MASTER BEDROOM

Master Double Bedroom with Fitted Wardrobes

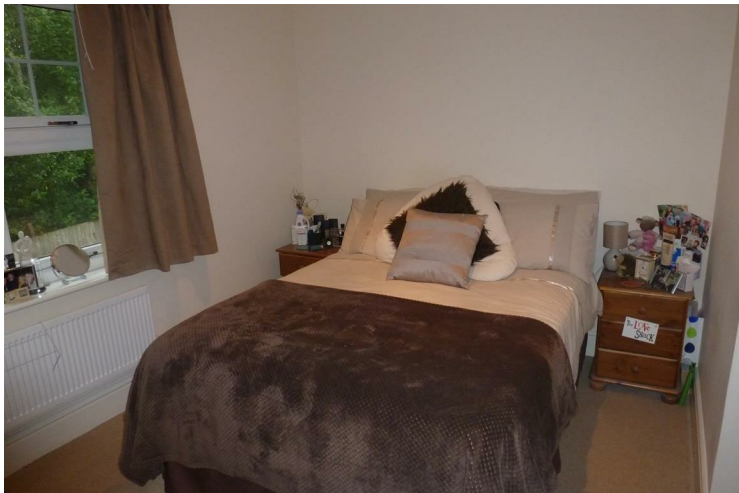
SECOND BEDROOM

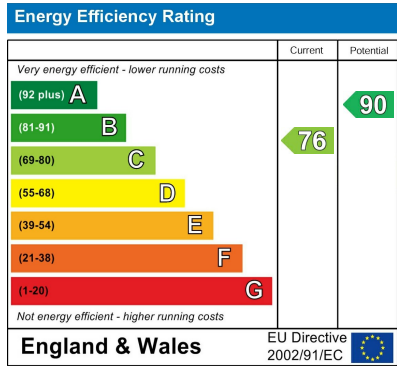
BATHROOM

Modern Bathroom with electric shower over the bath and mixer shower



• Master Double Bedroom with Fitted Wardrobes • Second Bedroom • Modern Bathroom with electric shower over the bath and mixer shower • Gas Central Heating • Resident and Visitors Parking • Garden. EPC C COUNCIL TAX BAND D





Agents Note: Whilst every care has been taken to prepare these particulars, they are for guidance purposes only. All measurements are approximate and are for general guidance purposes only and whilst every care has been taken to ensure their accuracy, they should not be relied upon and potential buyers/tenants are advised to recheck the measurements

Trueman Letting Company Lettings 01252 711227
 5a Castle Street lettings@tlc-farnham.co.uk
 Farnham www.tlc-farnham.co.uk
 Surrey
 GU9 7HR

