



**Trueman
Letting
Company**



11 Bardsley Drive Farnham

£1,550 PCM

An extremely spacious Victorian single storey property with high ceilings which has undergone a complete refurbishment programme prior to letting. The property is within walking distance of all amenities and the renowned Weydon and other highly regarded Schools. The property also benefits from a wrap around garden and courtyard terrace. The property has allocated parking and a viewing is highly recommended. UNFORTUNATELY NO PETS. EPC D COUNCIL TAX BAND C



- Entrance Hallway • Sitting Room/Dining Room with high ceilings • Newly fitted kitchen with electric hob and oven under, fridge/freezer, dishwasher and washing machin • Refitted bathroom with shower over the Bath with vinyl flooring • Separate Cloakroom with vinyl flooring • Master Bedroom with wardrobe cupboard

ENTRANCE HALLWAY

NEWLY FITTED KITCHEN

Newly fitted kitchen with electric hob and oven under, fridge/freezer, washing machine, and dishwasher.

SITTING ROOM/DINING ROOM

This is a very spacious room with opening from the kitchen which can be closed.

MASTER BEDROOM

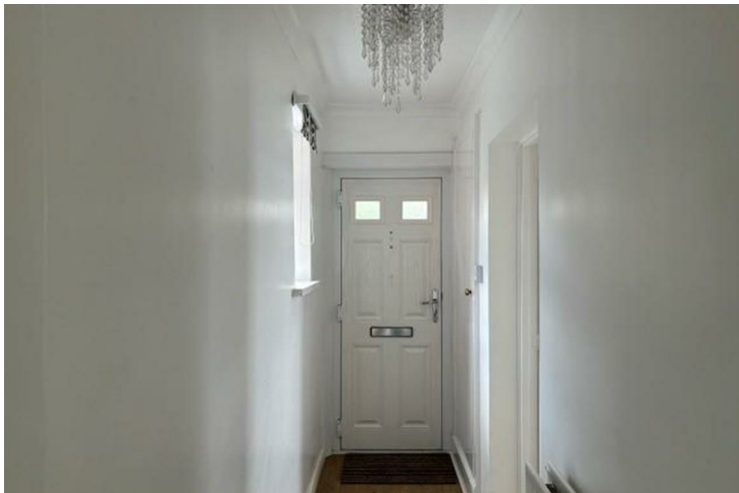
With fitted wardrobe cupboard

SECOND DOUBLE BEDROOM

NEWLY FITTED BATHROOM

White suite with shower over the bath.


SEPARATE CLOAKROOM



• Second Double Bedroom • Outside Space/garden and courtyard terrace • Resident parking • EPC D COUNCIL TAX BAND C





Energy Efficiency Rating		
	Current	Potential
Very energy efficient - lower running costs		
(92 plus) A		
(81-91) B		83
(69-80) C	68	
(55-68) D		
(39-54) E		
(21-38) F		
(1-20) G		
Not energy efficient - higher running costs		
England & Wales	EU Directive 2002/91/EC 	

Agents Note: Whilst every care has been taken to prepare these particulars, they are for guidance purposes only. All measurements are approximate and are for general guidance purposes only and whilst every care has been taken to ensure their accuracy, they should not be relied upon and potential buyers/tenants are advised to recheck the measurements

Trueman Letting Company Lettings 01252 711227
 5a Castle Street lettings@tlc-farnham.co.uk
 Farnham www.tlc-farnham.co.uk
 Surrey
 GU9 7HR

