



Antonia Grove, Stanground South Peterborough
Offers in Excess of £250,000 **Freehold**

**Sharman
Quinney**

Key Features



- Close to local amenities
- Well presented throughout
- Three storey living
- Downstairs cloakroom
- Spacious accommodation throughout

The Cardea Development located in the South West of Greater Peterborough offers excellent local amenities including; Primary and Secondary Schools, Doctors Surgery, a variety of local shops along with easy access into Stanground, Hampton, Yaxley and Peterborough City Centre. There is a good choice of local pubs as well as easy access to the A1 Great North Road and Peterborough Train Station which allows access into Central London in 50 mins. An early inspection is strongly recommended.

Entrance Hall -

Lounge - 4.47m x 3.58m (14'8" x 11'9")

Cloakroom



Kitchen/Dining Room - 2.67m x 3.58m (8'9" x 11'9")

First Floor And Landing

Bedroom 2 - 3.18m x 3.58m max (10'5" x 11'9" max)

Bedroom 3 - 2.67m x 3.58m max (8'9" x 11'9" max)

Family bathroom

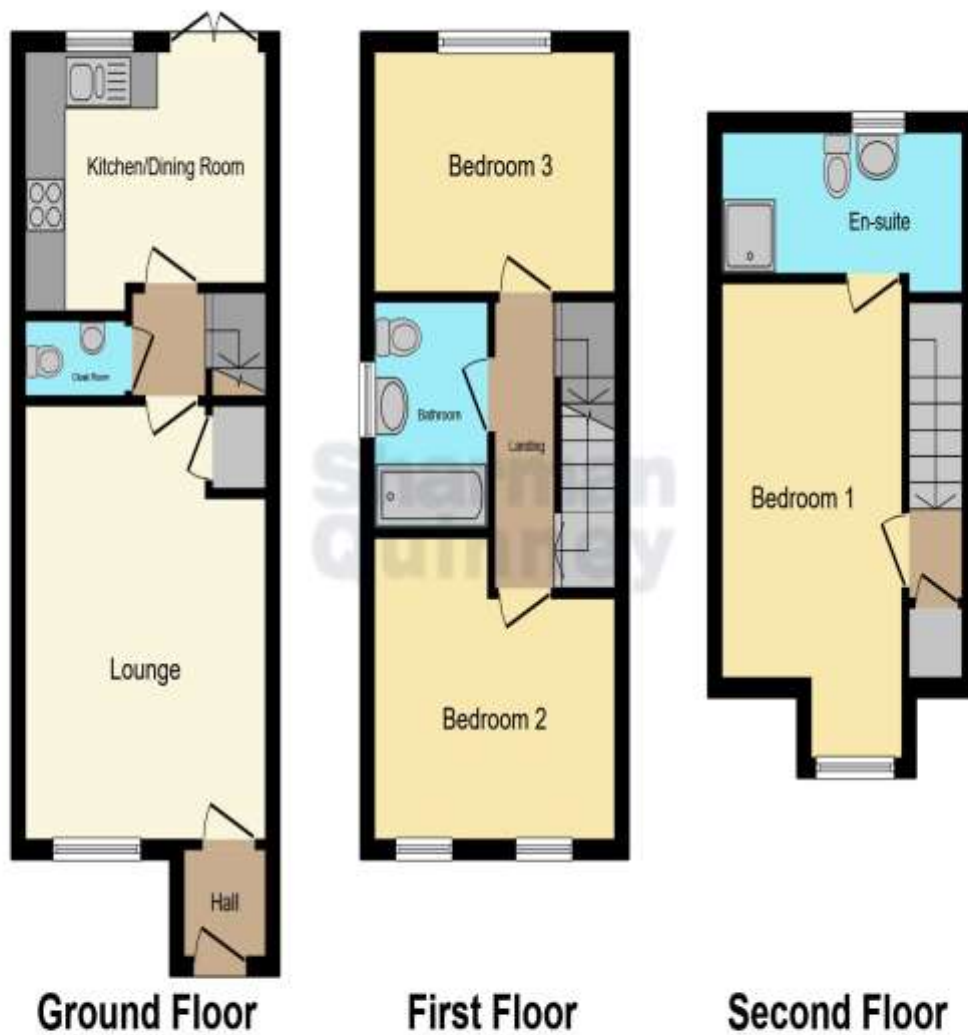
Second Floor And Landing

Bedroom 1 - 2.57m x 4.98m (8'5" x 16'4")

En-Suite

Outside - Off road parking, enclosed rear garden, additional visitor parking out the front.






This floor plan is for illustrative purposes only. It is not drawn to scale. Any measurements, floor areas (including any total floor area), openings and orientation are approximate. No details are guaranteed, they cannot be relied upon for any purpose and they do not form part of any agreement. No liability is taken for any error, omission or misstatement. A party must rely upon its own inspection(s). Powered by www.focalagent.com

To view this property call Sharman Quinney on:
01733 896222

Selling your property?

Contact us to arrange a **FREE** home valuation.

 01733 896222

 13 Desborough Avenue, Stanground,
PETERBOROUGH, Cambridgeshire, PE2 8RG

 stanground@sharmanquinney.co.uk

 www.sharmanquinney.co.uk



 SCAN ME



Sharman Quinney Holdings Limited is registered in England and Wales under company number 4174227, Registered Office is Cumbria House, 16-20 Hockliffe Street, Leighton Buzzard, Bedfordshire, LU7 1GN. VAT Registration Number is 500 2481 05.

1: These particulars do not constitute part or all of an offer or contract. 2: The measurements indicated are supplied for guidance only and as such must be considered incorrect. 3: Potential buyers are advised to recheck the measurements before committing to any expense. 4: Sharman Quinney has not tested any apparatus, equipment, fixtures, fittings or services and it is the buyers interests to check the working condition of any appliances. 5: Sharman Quinney has not sought to verify the legal title of the property and buyers must obtain verification from their legal representative. 6: Intending purchasers will be asked to produce identification documentation at a later stage and we would ask your co-operation in order that there will be no delay in agreeing the sale. Ref: SSQ204626 - 0001

